

A two-story house with a light-colored brick exterior and dark grey roof tiles. The house features a large front window on the ground floor, a smaller window on the first floor, and a garage with a dark grey roller door. The driveway is paved with dark grey bricks. A satellite dish is visible on the roof. The house is surrounded by greenery, including bushes and trees. A wooden fence and a stack of firewood are visible on the right side. The sky is blue with some clouds.

abbotFox

Greyfriars Close, Norwich
£690,000

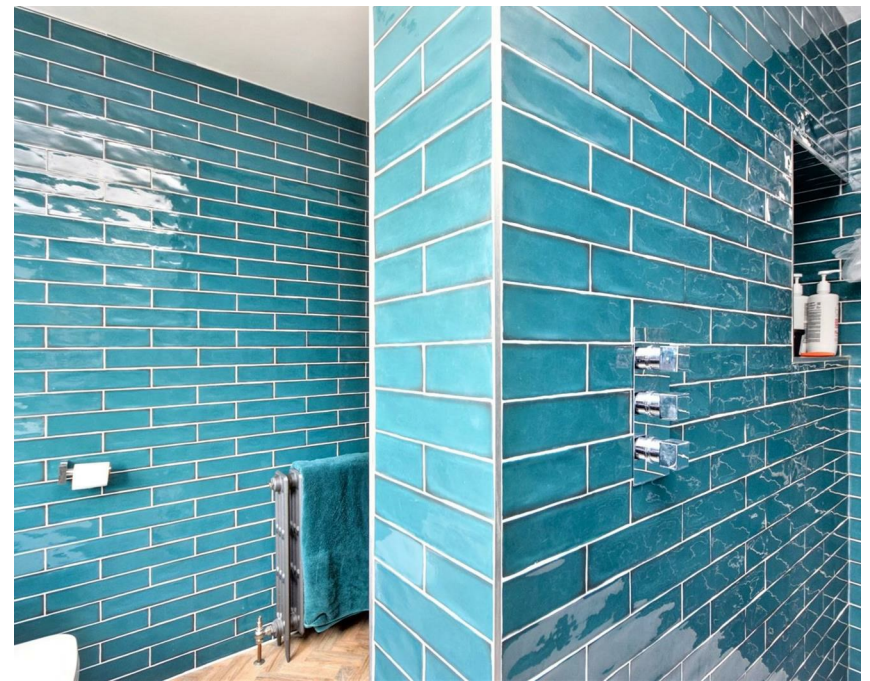
“

We are a team of genuine individuals who hold a deep passion for both property and marketing. Collectively, we bring over 70 years of experience in the property market of Norfolk and Suffolk. Our affection for both counties runs deep, and we are enthusiastic about sharing our passion with you.

Colin McKenzie | **Branch Partner**







THE DETAIL_____

abbotFox presents this impressive, extended family home, perfectly positioned within a quiet cul-de-sac in the heart of Old Catton.

Occupying a generous plot, this home offers spacious and versatile living, ideal for growing families or those seeking multi-generational accommodation. The ground floor welcomes you with a bright entrance hall, a generous lounge with views over the front garden, and an extended open-plan kitchen/dining room that flows seamlessly into a rear family room – a perfect space for entertaining or relaxing. The ground floor is completed with a utility room, boot room and cloakroom, along with internal access to the integral garage.

Upstairs, this home boasts four well-proportioned bedrooms, family bathroom and an additional contemporary shower room. Outside, the property continues to impress with a large rear garden, ideal for summer gatherings, and a driveway offering ample off-road parking.

Tucked away in a desirable NR6 location, this home enjoys easy access to local amenities, schools, and the city centre. A rare opportunity to secure a substantial home in a sought-after setting – early viewing is highly recommended.

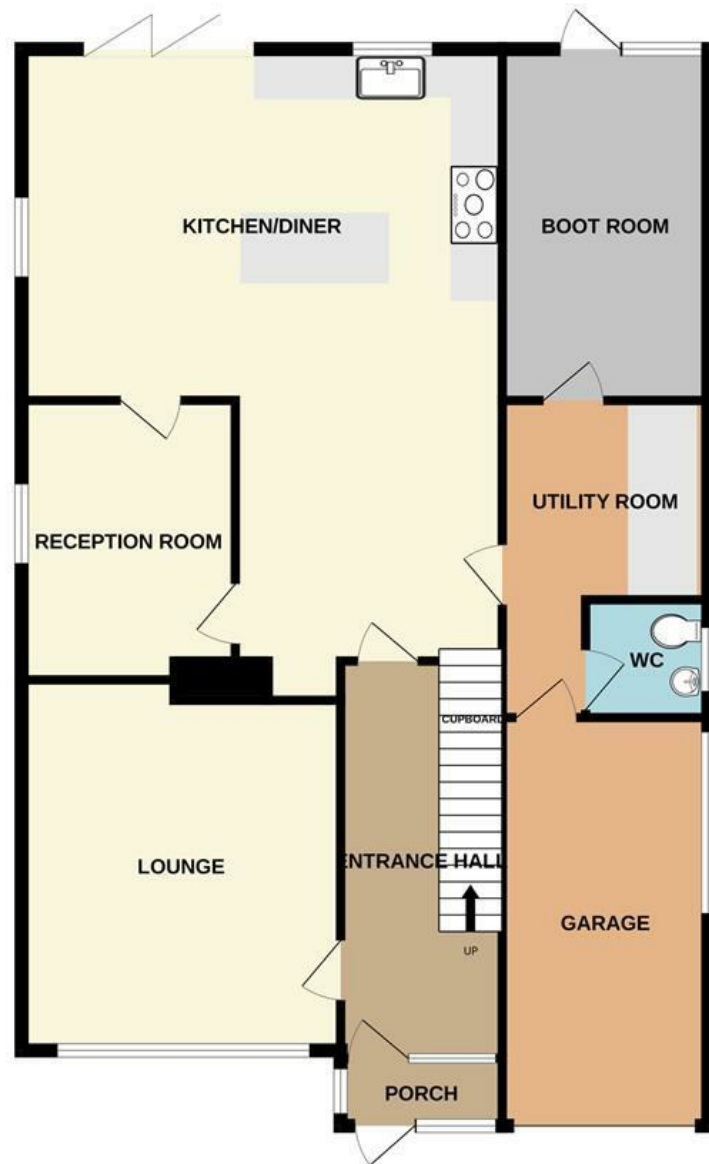






THE HIGHLIGHTS__

- Extended detached family home
- Four double bedrooms
- Exceptional living accommodation
- Private generous gardens
- Sought after location
- Easy access to local amenities
- Internal viewing highly recommended



Let's talk

01603 660000

sales@abbotfox.co.uk

@abbotfox

EPC RATING -

Disclaimer – In accordance with the Property Misdescriptions Act, the company abbotFox gives notice that all descriptions, references to condition, necessary permissions for use and other details are given in good faith and believed to be correct, but any purchaser should not rely on them as statements of fact, and must satisfy themselves by inspection or other means, as to their accuracy.