

abbotFox



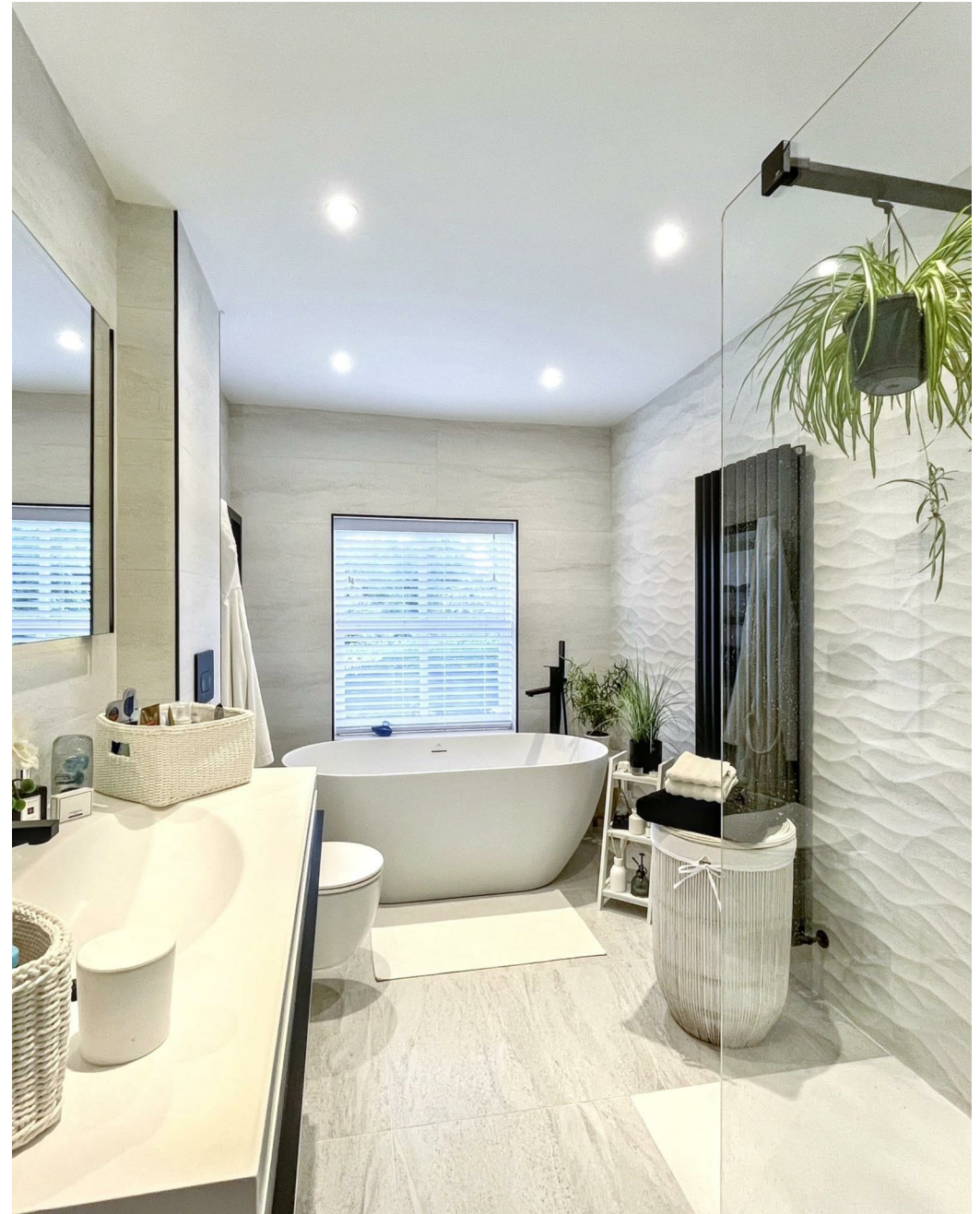
Norwich, NR1

Guide Price £300,000

“

We are a team of genuine individuals who hold a deep passion for both property and marketing. Collectively, we bring over 70 years of experience in the property market of Norfolk and Suffolk. Our affection for both counties runs deep, and we are enthusiastic about sharing our passion with you.

Colin McKenzie | **Branch Partner**







THE DETAIL_____

abbotFox presents this exceptional opportunity to acquire a beautifully appointed period home set on the ever-popular Hughenden Road ideally situated within easy reach of Norwich City Centre.

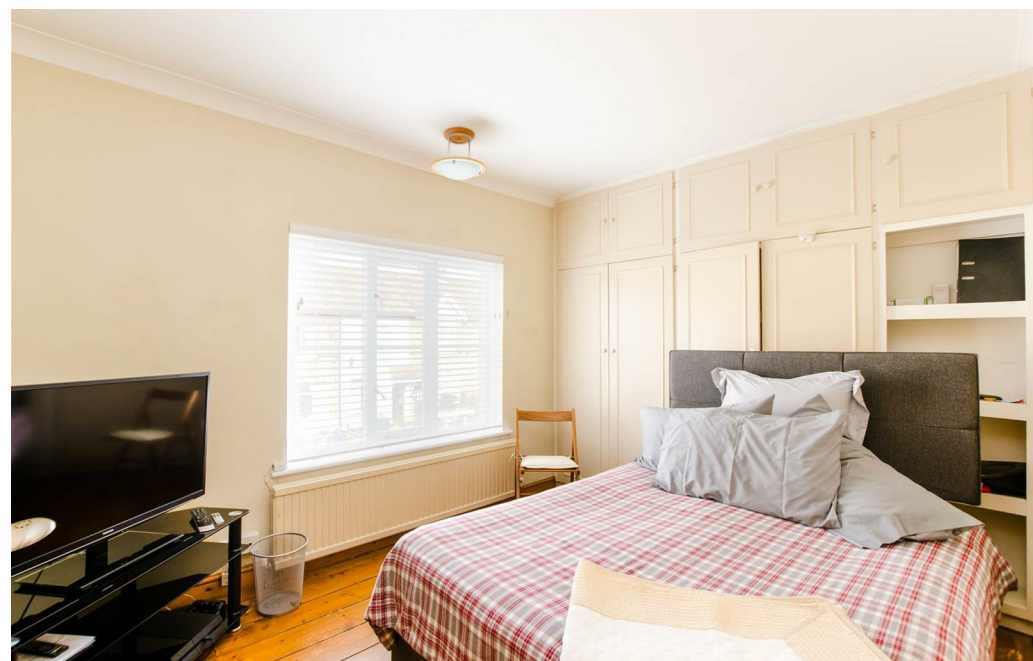
From the moment you step inside, this striking property effortlessly blends timeless charm with contemporary comfort. A light-filled bay-fronted reception room greets you with elegant proportions, original fireplaces, and bespoke cabinetry, while the adjacent dining space flows seamlessly into a thoughtfully extended kitchen—designed for modern living and entertaining.

Upstairs, the property continues to impress with generously sized bedrooms and a tastefully updated family bathroom. Each room is finished to a high standard, offering calm, considered interiors that maximise both space and natural light.

Outside, a private garden provides a tranquil retreat, perfect for alfresco dining, and also offers off road parking to the rear. Residents will also benefit from residents' permit parking and excellent access to Norwich's array of shops, cafes, and transport links.

An internal viewing comes highly recommended to appreciate the quality of this home.

£300,000 - £325,000







THE HIGHLIGHTS__

- Hall entrance terraced house
- Off road parking to the rear
- Generous, open plan living
- Cul-de-sac location
- Walking distance to City Centre
- Viewing advised
- Guide price £300,000 - £325,000

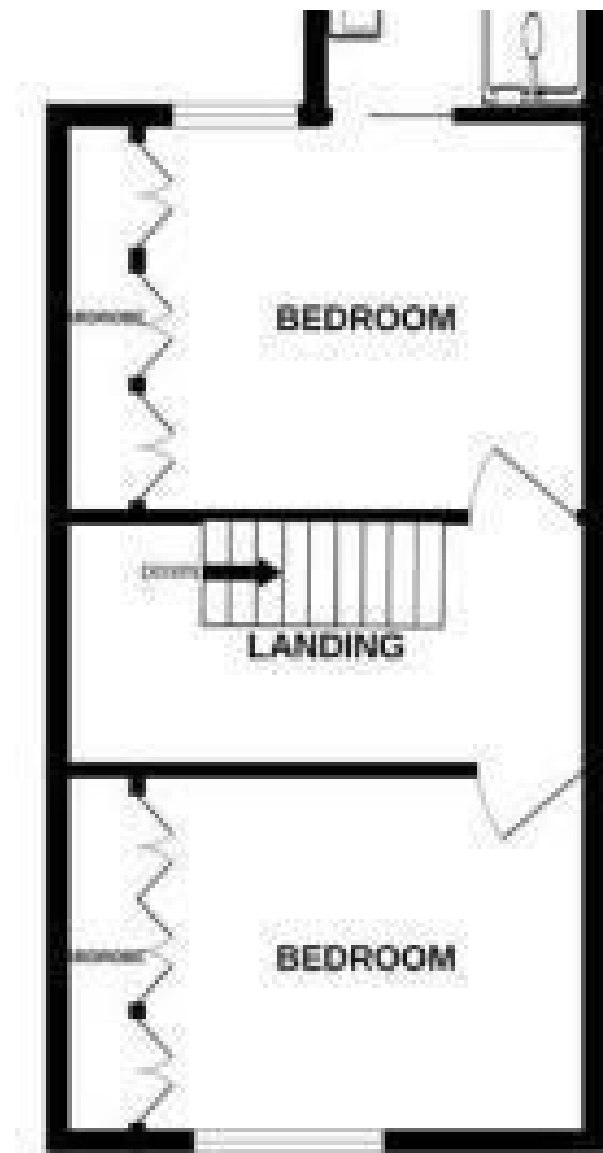


Let's talk

01603 660000

sales@abbotfox.co.uk

@abbotfox



EPC RATING - D

Disclaimer – In accordance with the Property Misdescriptions Act, the company abbotFox gives notice that all descriptions, references to condition, necessary permissions for use and other details are given in good faith and believed to be correct, but any purchaser should not rely on them as statements of fact, and must satisfy themselves by inspection or other means, as to their accuracy.