

abbotFox



Sprowston, NR7
£375,000

“

We are a team of genuine individuals who hold a deep passion for both property and marketing. Collectively, we bring over 70 years of experience in the property market of Norfolk and Suffolk. Our affection for both counties runs deep, and we are enthusiastic about sharing our passion with you.

Colin McKenzie | **Branch Partner**







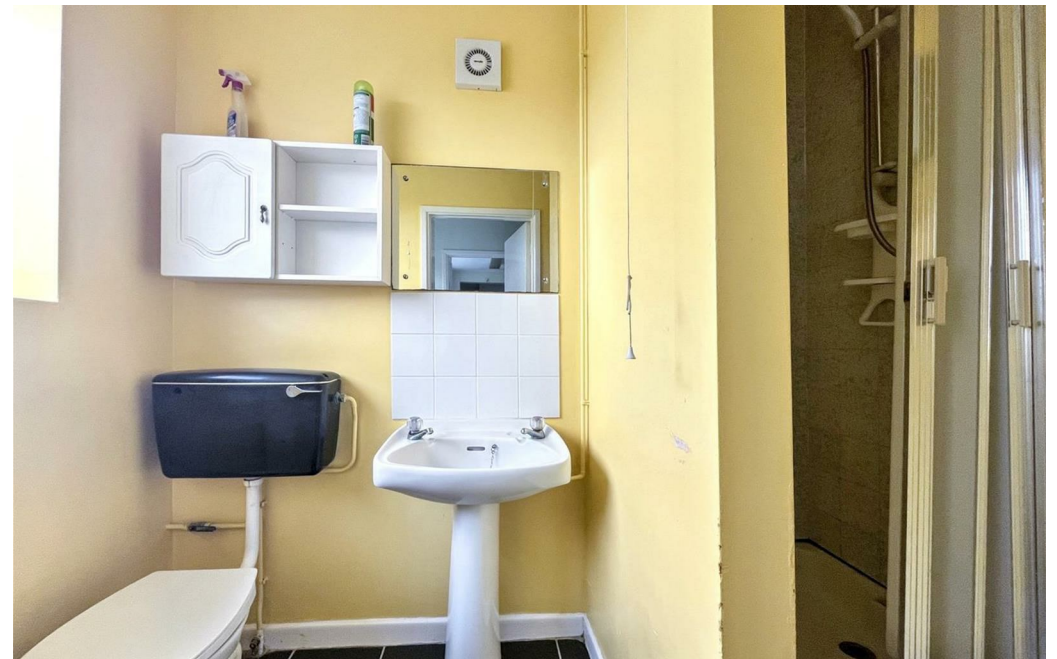
THE DETAIL_____

abbotFox presents this exceptional detached bungalow, perfectly positioned on a generous plot within the sought-after suburb of Sprowston. Thoughtfully extended, this versatile home offers a rare blend of spacious accommodation, flexible living and outdoor potential.

This home immediately impresses with its wide frontage and ample driveway parking leading to the adjoining garage. The internal accommodation offers a flexible layout of 3/4 bedrooms and spacious reception rooms.

Outside, the expansive garden offers endless potential – perfect for growing families, keen gardeners or those seeking further development potential (STPP). Whether it's hosting summer gatherings, adding a garden studio or simply enjoying the peace and privacy, this outdoor space is a true highlight.

Located moments from local amenities, schools and easy access to Norwich city centre, this is a rare opportunity to secure a high-quality home in a peaceful yet convenient location.

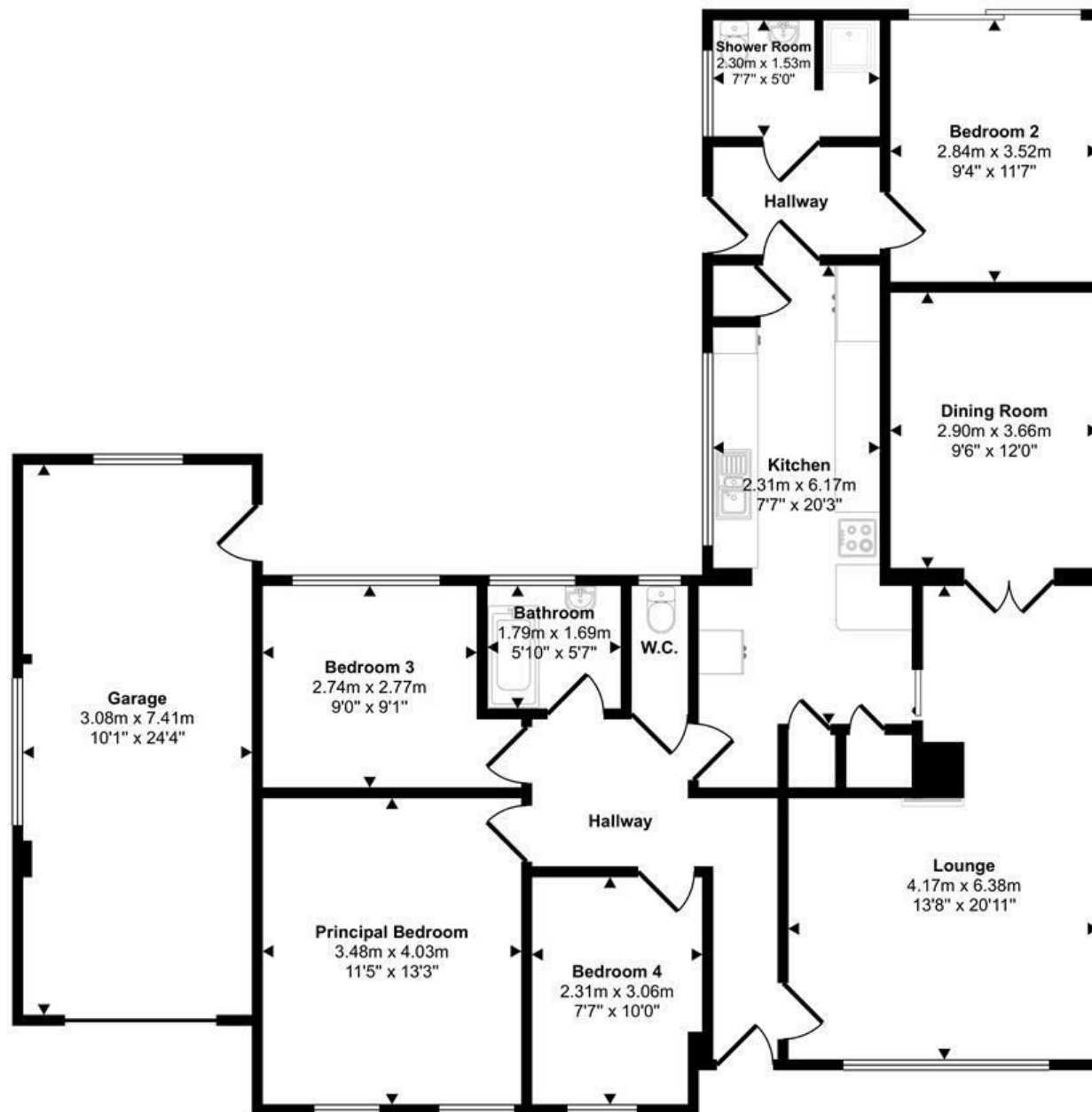






THE HIGHLIGHTS____

- Extended detached bungalow
- Three / four bedrooms
- Generous living accommdation
- Exceptional plot
- Soughgt after location
- No onward chain
- Viewing advised



Floorplan

Let's talk

01603 660000

sales@abbotfox.co.uk

@abbotfox

EPC RATING -

Disclaimer – In accordance with the Property Misdescriptions Act, the company abbotFox gives notice that all descriptions, references to condition, necessary permissions for use and other details are given in good faith and believed to be correct, but any purchaser should not rely on them as statements of fact, and must satisfy themselves by inspection or other means, as to their accuracy.