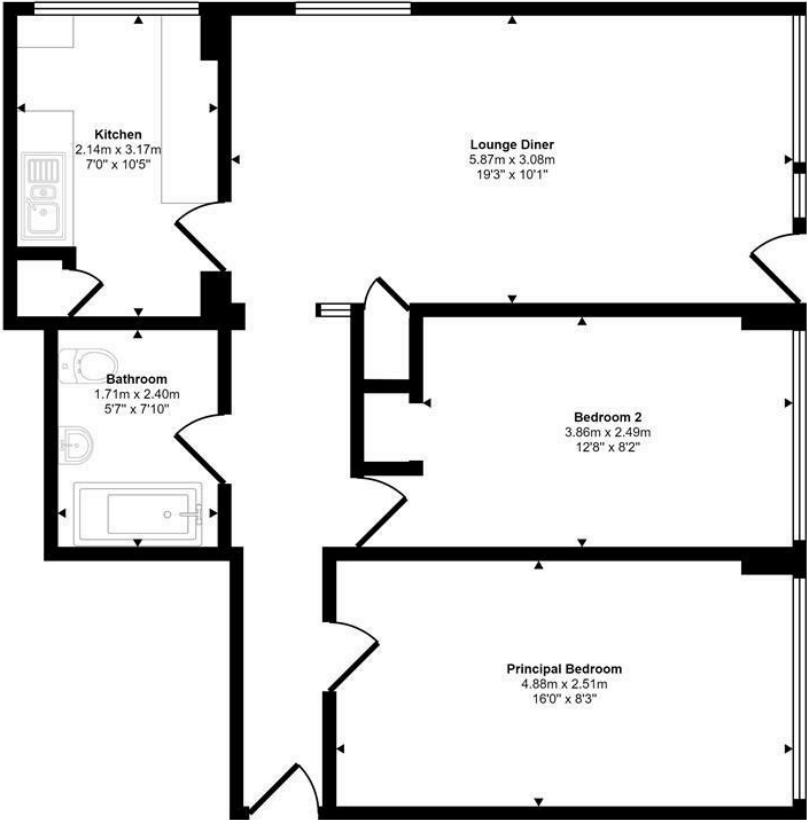




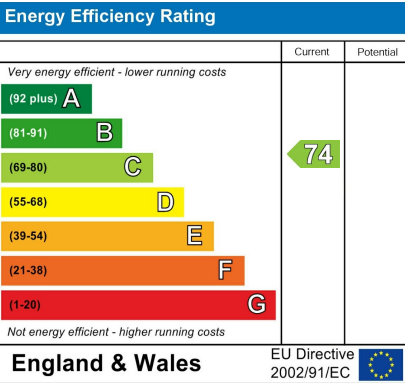
Munnings Road | Norwich | NR7  
Guide £115,000

Approx Gross Internal Area  
62 sq m / 665 sq ft



Floorplan

This floorplan is only for illustrative purposes and is not to scale. Measurements of rooms, doors, windows, and any items are approximate and no responsibility is taken for any error, omission or mis-statement. Icons of items such as bathroom suites are representations only and may not look like the real items. Made with Made Snappy 360.



Disclaimer – In accordance with the Property Misdescriptions Act, the company gives notice that all descriptions, references to condition, necessary permissions for use and other details are given in good faith and believed to be correct, but any intending lessees do not rely on them as statements of fact, but must satisfy themselves by inspection or other means, as to their accuracy.



abbotFox presents this two bedroom apartment with a dual aspect lounge dining room, fitted kitchen, modern bathroom and communal gardens/playing fields.

The area offers a wide range of amenities including local shops, schools, public houses and supermarkets. Mousehold Heath with its popular walks and recreational facilities is nearby and there is easy access into and out of Norwich.

