

abbotFox



Cromer, NR27
Guide Price £375,000

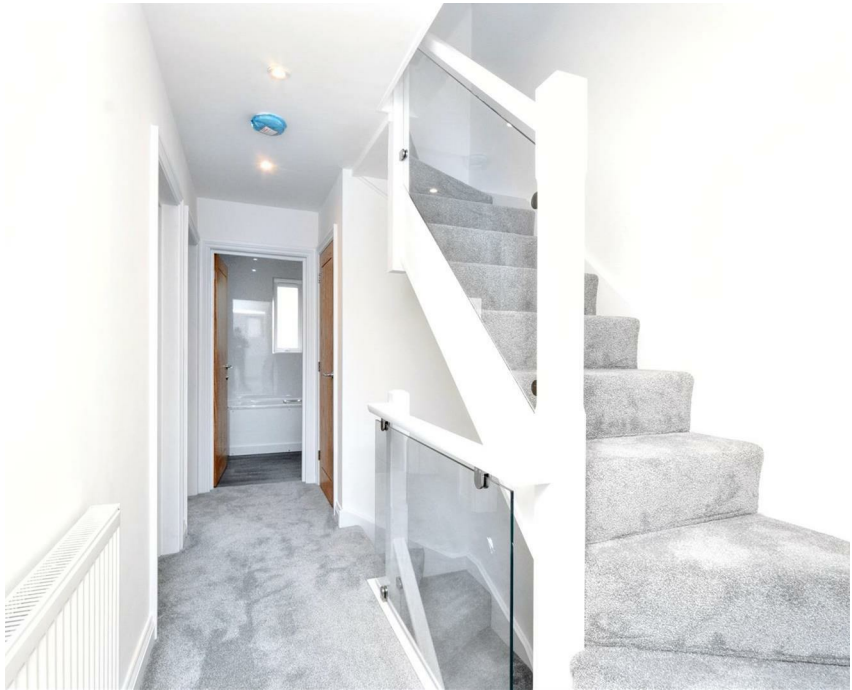
“

We are a team of genuine individuals who hold a deep passion for both property and marketing. Collectively, we bring over 70 years of experience in the property market of Norfolk and Suffolk. Our affection for both counties runs deep, and we are enthusiastic about sharing our passion with you.

Colin McKenzie | **Branch Partner**







THE DETAIL_____

abbotFox presents this expertly crafted and flawlessly finished, brand new three-storey home, which delivers an exceptional standard of modern living.

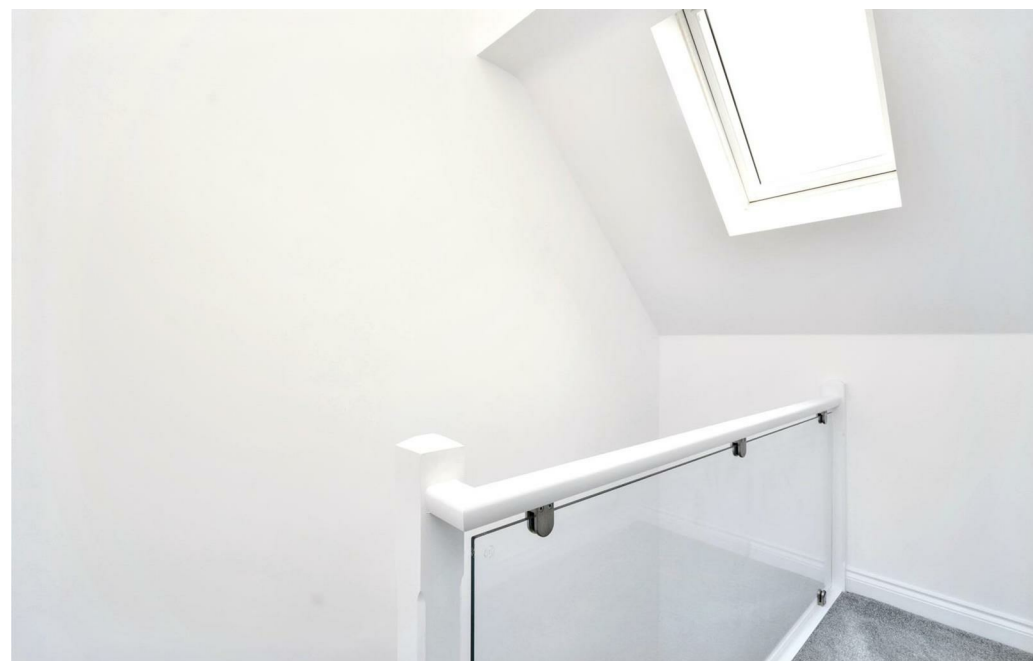
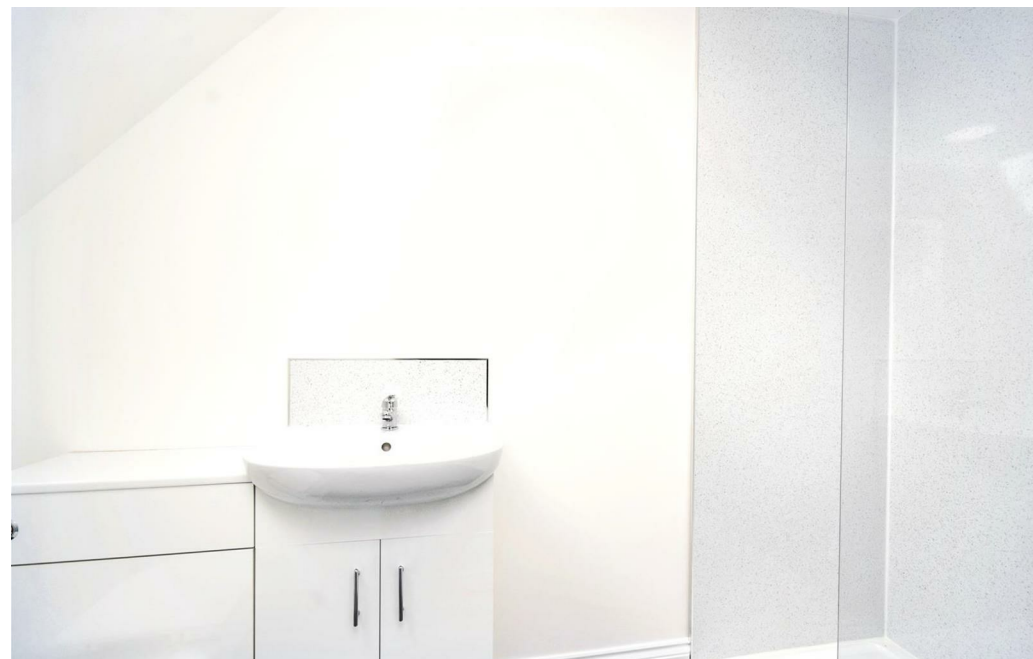
Set across three levels, the design offers space and flexibility with three generously proportioned bedrooms, sleek bathrooms, and beautifully considered living areas. The heart of the home centres around a bright, open-plan space where the kitchen, living, and dining flow seamlessly, ideal for entertaining or relaxing in style.

The top floor is dedicated to a luxurious master suite, complete with an en-suite. Additional bedrooms are thoughtfully positioned to offer privacy and convenience, each complemented by high-quality finishes and natural light.

With a private landscaped garden, and off road parking to the front, this stylish home offers an ideal home for any buyer looking for low-maintenance living.

Positioned moments from Cromer's beaches, parks, schools, and village amenities, it offers the very best of coastal life, just a short distance from the town centre. An internal viewing comes highly recommended.

£375,000 - £400,000



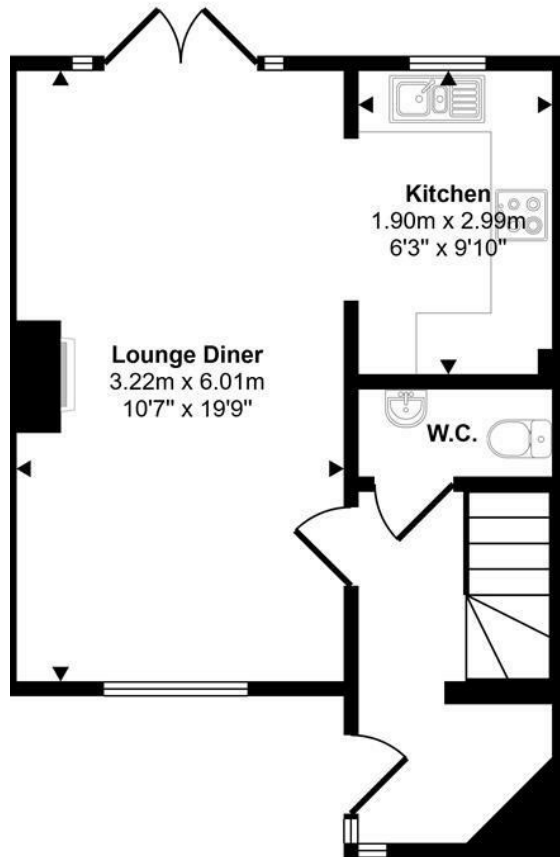




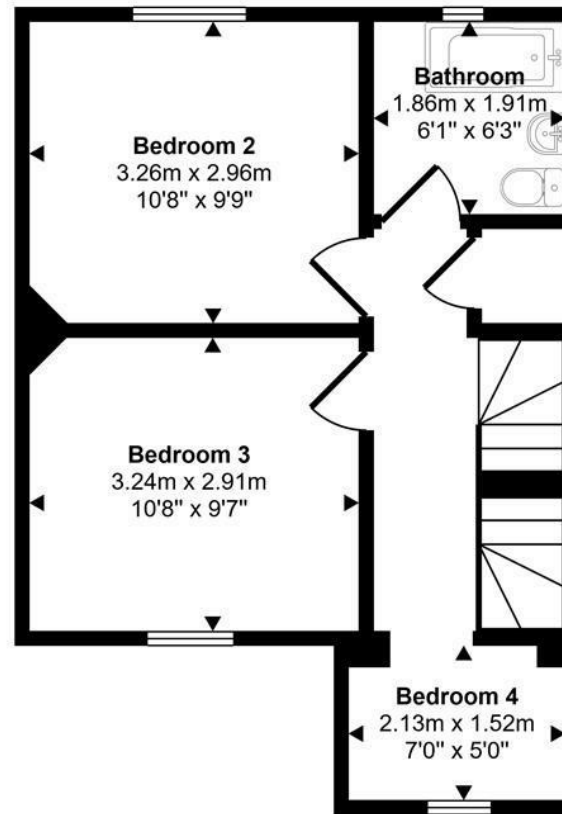
THE HIGHLIGHTS____

- Brand New Architecturally Designed Home
- Three Storey Town House
- Three Bedrooms
- Open Plan Living Area
- Off Road Parking
- Close To Town Centre
- Guide Price £375,000 - £400,000

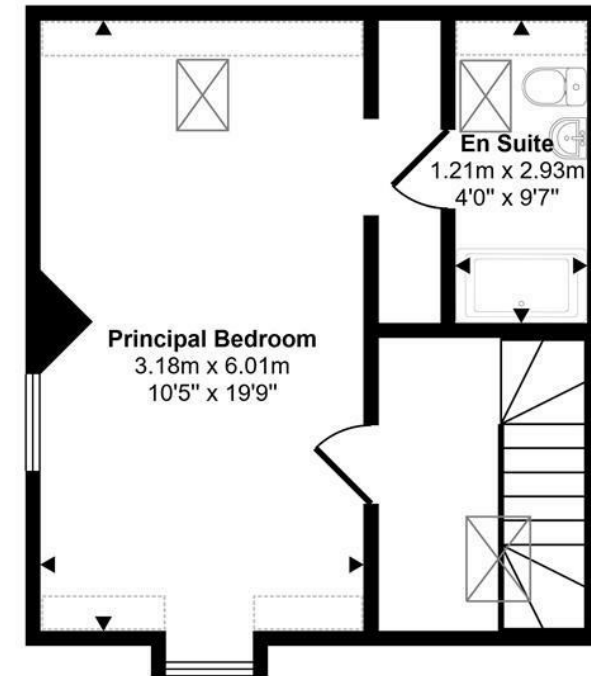
Approx Gross Internal Area
102 sq m / 1099 sq ft



Ground Floor
Approx 35 sq m / 374 sq ft



First Floor
Approx 35 sq m / 378 sq ft



Second Floor
Approx 32 sq m / 347 sq ft

Denotes head height below 1.5m

This floorplan is only for illustrative purposes and is not to scale. Measurements of rooms, doors, windows, and any items are approximate and no responsibility is taken for any error, omission or mis-statement. Icons of items such as bathroom suites are representations only and may not look like the real items. Made with Made Snappy 360.

Let's talk

01603 660000

sales@abbotfox.co.uk

@abbotfox

EPC RATING -

Disclaimer – In accordance with the Property Misdescriptions Act, the company abbotFox gives notice that all descriptions, references to condition, necessary permissions for use and other details are given in good faith and believed to be correct, but any purchaser should not rely on them as statements of fact, and must satisfy themselves by inspection or other means, as to their accuracy.