

abbotFox



Norwich City Centre, NR1
£3,500 PCM

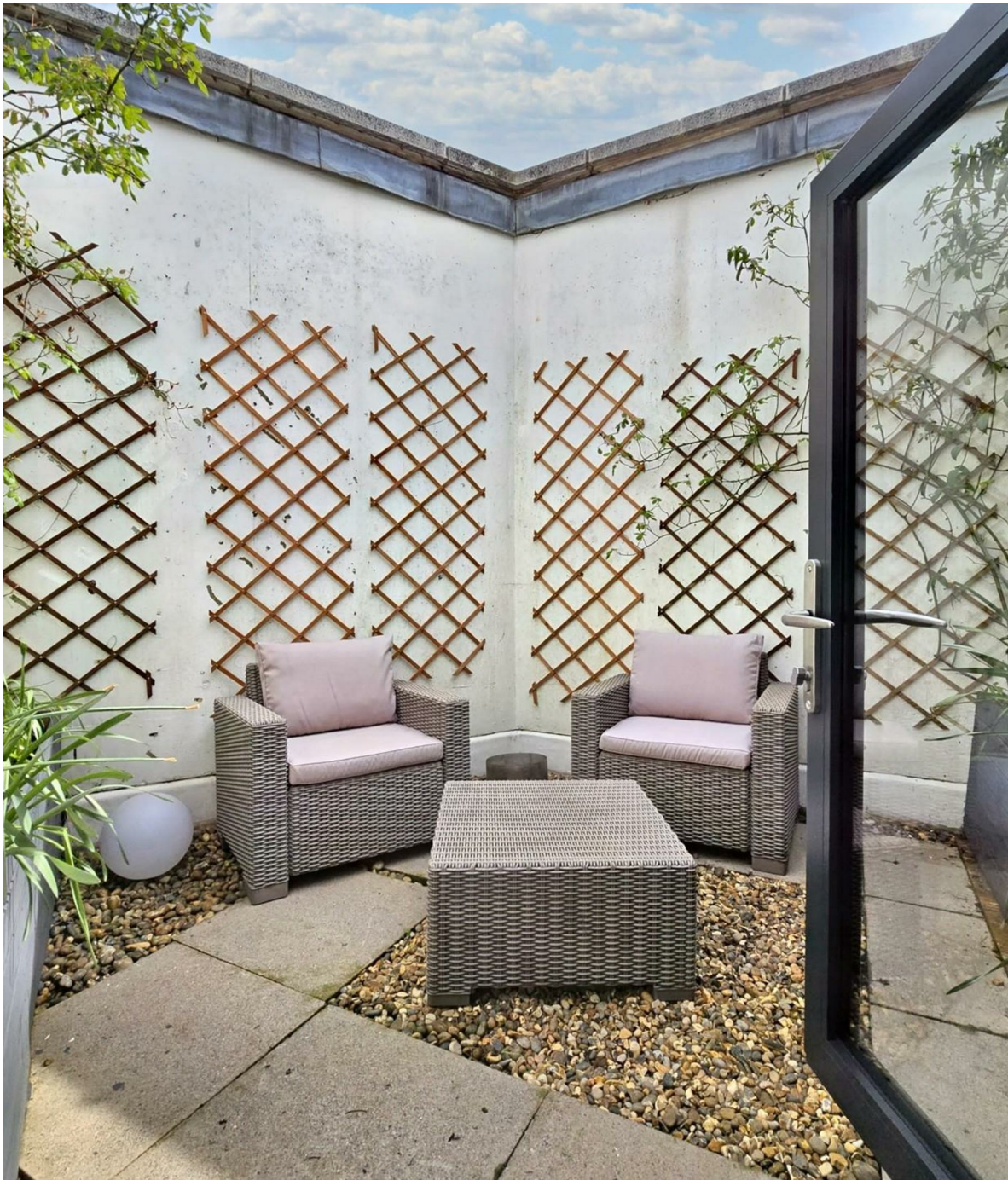
“

We are a team of genuine individuals who hold a deep passion for both property and marketing. Collectively, we bring over 70 years of experience in the property market of Norfolk and Suffolk. Our affection for both counties runs deep, and we are enthusiastic about sharing our passion with you.

Colin McKenzie | **Branch Partner**







THE DETAIL_____

AbbotFox presents this exceptional five-bedroom penthouse apartment, now available as a premium student home, right in the heart of Norwich city centre.

Spanning an impressive 2,200 sq. ft., this bright and spacious property offers an unrivaled living experience, complete with three private outdoor areas—perfect for relaxation or socialising.

A stunning vaulted sitting room forms the heart of the apartment, complementing a well-equipped, generously sized kitchen-breakfast room, ideal for shared student living.

Each of the five double bedrooms comes with its own en suite, providing privacy and convenience. The principal and guest bedrooms also benefit from their own private outdoor spaces.

Additional perks include secure underground parking, a concierge service, a communal lounge, and an exclusive 24/7 on-site gym—offering students a high-end, hassle-free lifestyle in an unbeatable location.



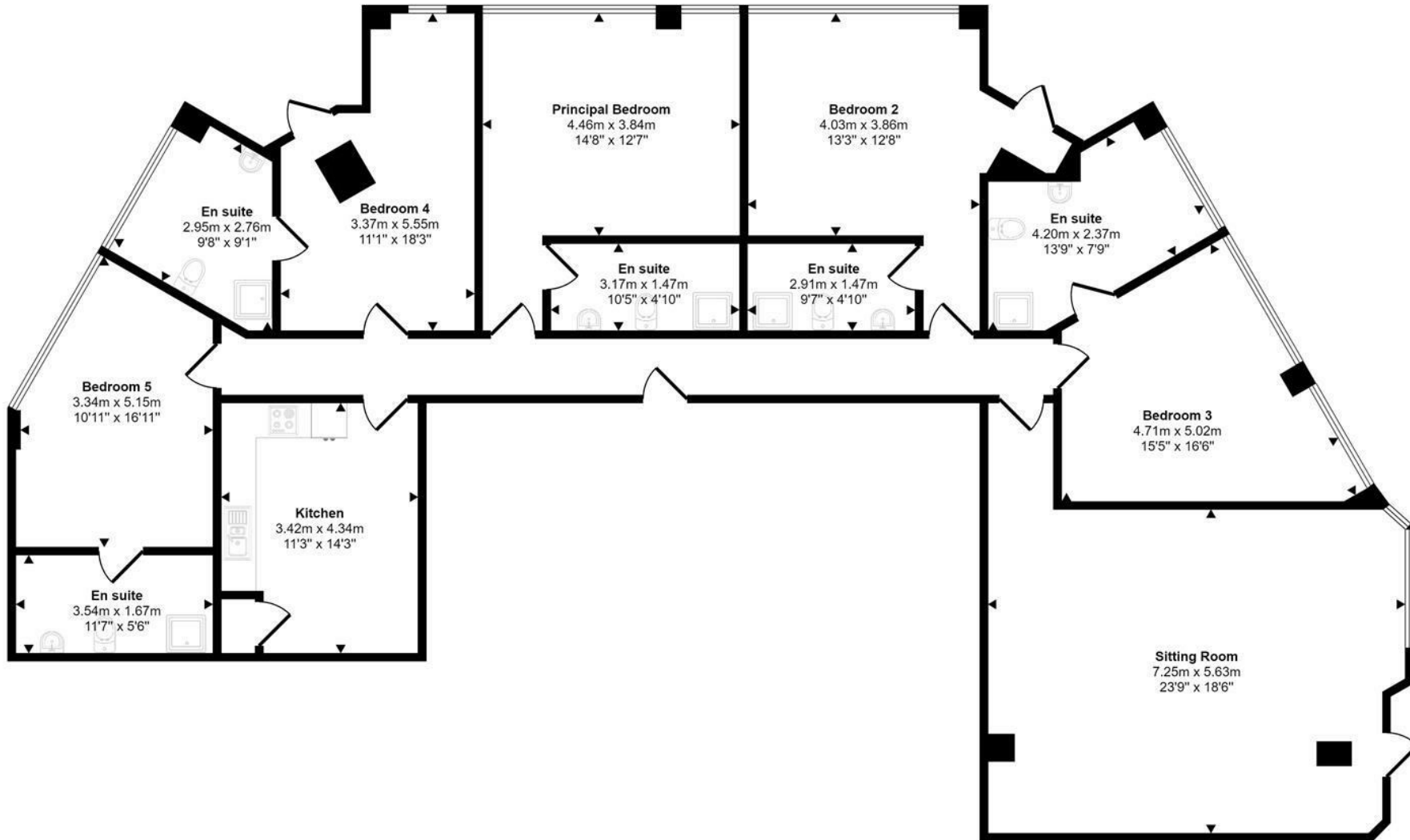




THE HIGHLIGHTS____

- Exclusive city centre penthouse apartment
- Three private, outdoor areas
- Around 2,200 sq ft
- Five double bedrooms each with an ensuite
- The sitting room is vaulted and features a private outdoor area
- The principal and guest bedrooms both features private outdoor spaces
- Generous kitchen breakfast room
- Secure underground parking
- Concierge service, communal lounge and exclusive 24/7 on site gym

Approx Gross Internal Area
198 sq m / 2135 sq ft



Floorplan

This floorplan is only for illustrative purposes and is not to scale. Measurements of rooms, doors, windows, and any items are approximate and no responsibility is taken for any error, omission or mis-statement. Icons of items such as bathroom suites are representations only and may not look like the real items. Made with Made Snappy 360.

Let's talk

01603 660000

sales@abbotfox.co.uk

@abbotfox

EPC RATING - E

Disclaimer – In accordance with the Property Misdescriptions Act, the company abbotFox gives notice that all descriptions, references to condition, necessary permissions for use and other details are given in good faith and believed to be correct, but any purchaser should not rely on them as statements of fact, and must satisfy themselves by inspection or other means, as to their accuracy.