

abbotFox

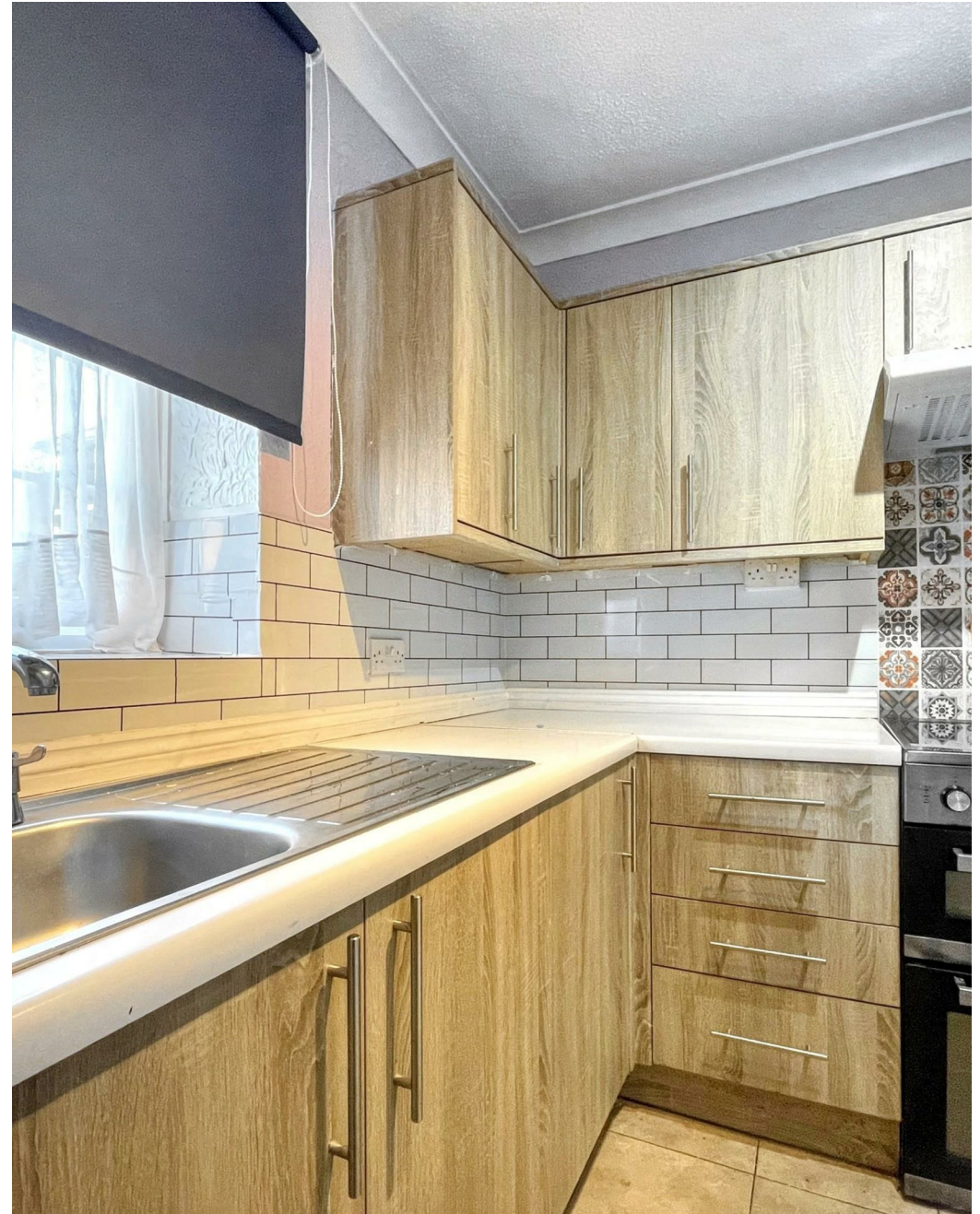


Southwell Road, Norwich
£850 PCM

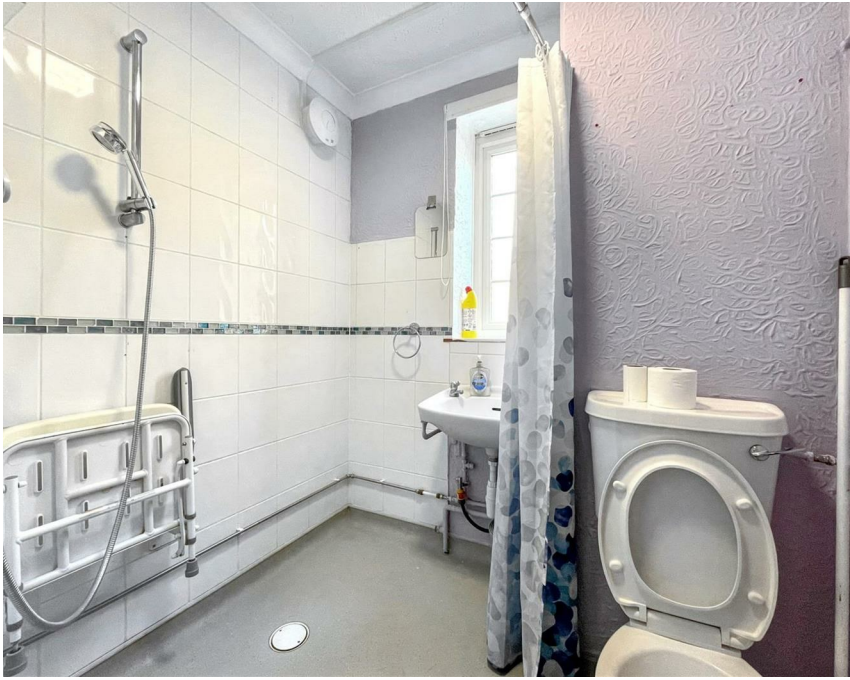
“

We are a team of genuine individuals who hold a deep passion for both property and marketing. Collectively, we bring over 70 years of experience in the property market of Norfolk and Suffolk. Our affection for both counties runs deep, and we are enthusiastic about sharing our passion with you.

Colin McKenzie | **Branch Partner**







THE DETAIL_____

Beautifully Presented One-Bedroom Ground Floor Flat with Private Garden

AbbotFox is delighted to present this exceptional one-bedroom ground-floor flat, offering stylish and comfortable living in a highly sought-after location. This beautifully maintained home boasts a spacious lounge, a well-proportioned double bedroom, and a modern fitted kitchen, all designed to a high standard. One of its standout features is the private garden, providing a peaceful outdoor retreat—perfect for relaxing or entertaining.

Situated just moments from Norwich city centre, this property benefits from an array of amenities right on its doorstep. Residents can enjoy a fantastic selection of high-street shops, including those at Chapelfield and Castle Mall, as well as an excellent variety of cafes, bars, and restaurants. With convenient transport links and everything the vibrant city has to offer within easy reach, this property is ideal for professionals, couples, or investors seeking a prime location.

An internal viewing is highly recommended to fully appreciate the space, quality, and lifestyle this home has to offer.



THE HIGHLIGHTS_____

- One Bedroomed Flat
- Ground Floor
- Modern Kitchen
- Spacious Lounge
- Wet Room
- Private Garden
- Close to City Centre
- Parking

Let's talk

01603 660000

sales@abbotfox.co.uk

[@abbotfox](#)

EPC RATING -

Disclaimer – In accordance with the Property Misdescriptions Act, the company abbotFox gives notice that all descriptions, references to condition, necessary permissions for use and other details are given in good faith and believed to be correct, but any purchaser should not rely on them as statements of fact, and must satisfy themselves by inspection or other means, as to their accuracy.