

abbotFox



Hellesdon, NR6
Guide Price £350,000

“

We are a team of genuine individuals who hold a deep passion for both property and marketing. Collectively, we bring over 70 years of experience in the property market of Norfolk and Suffolk. Our affection for both counties runs deep, and we are enthusiastic about sharing our passion with you.

Colin McKenzie | **Branch Partner**







THE DETAIL_____

abbotFox presents this well proportioned, detached chalet bungalow. Sitting on a spacious corner plot, this individually built home offers a convenience hard to match, with a wealth of amenities, including schools, shops and parks within easy reach and also offers excellent transport links into and out of Norwich.

The property itself has been well maintained throughout and offers a sense of light and space within every room. The internal accommodation comprises; an inviting entrance hall, cloakroom, lounge diner, kitchen breakfast room and two bedrooms to the ground floor. The first floor provides two spacious double bedrooms and a family bathroom accessed off landing.

The property sits centrally within the spacious corner plot, with a generous frontage, that could be converted into additional off road parking (STNC) and an enclosed rear garden which allows for potential to extend (STPP). Set to the rear of the property is a detached garage and driveway.

Offered to the market with no onward chain, an internal viewing is essential to appreciate the space and potential this home has to offer.

Guide price £350,000 - £375,000



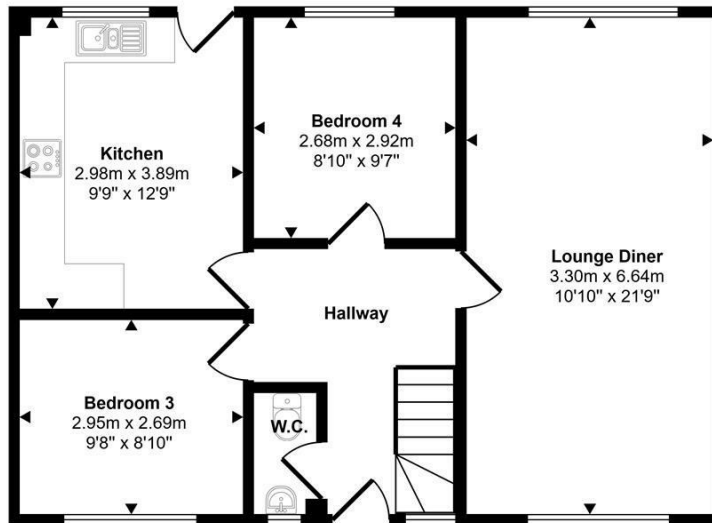





THE HIGHLIGHTS____

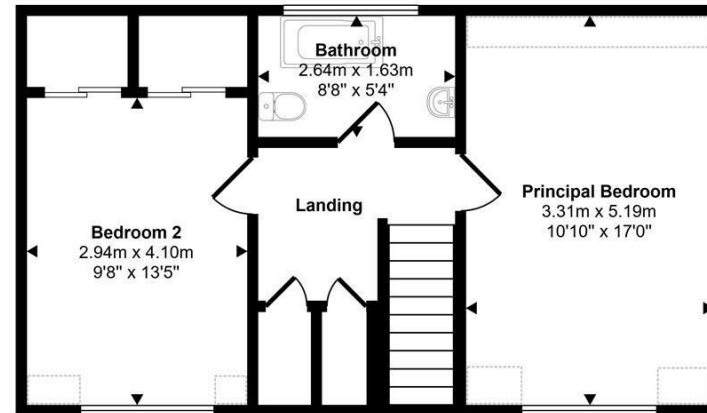
- Guide price £350,000 - £375,000
- Detached chalet bungalow
- Four bedrooms
- Generous living accommodation
- Spacious corner plot
- Off road parking and garage
- Potential to extend (STPP)
- Ideal family home
- Close to local amenities
- Internal viewing advised

Approx Gross Internal Area
109 sq m / 1177 sq ft



Ground Floor
Approx 62 sq m / 664 sq ft

 Denotes head height below 1.5m



First Floor
Approx 48 sq m / 514 sq ft

This floorplan is only for illustrative purposes and is not to scale. Measurements of rooms, doors, windows, and any items are approximate and no responsibility is taken for any error, omission or mis-statement. Icons of items such as bathroom suites are representations only and may not look like the real items. Made with Made Snappy 360.

Let's talk

01603 660000

sales@abbotfox.co.uk

@abbotfox

EPC RATING -

Disclaimer – In accordance with the Property Misdescriptions Act, the company abbotFox gives notice that all descriptions, references to condition, necessary permissions for use and other details are given in good faith and believed to be correct, but any purchaser should not rely on them as statements of fact, and must satisfy themselves by inspection or other means, as to their accuracy.