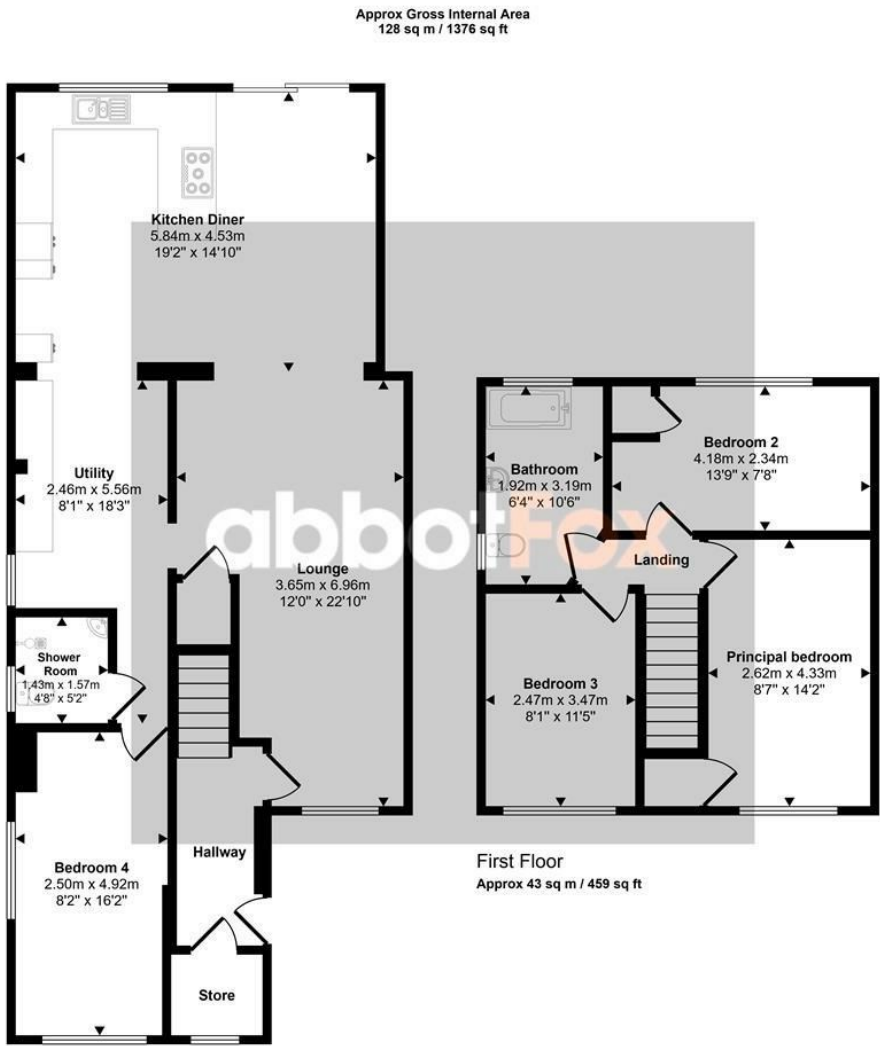




Childs Road | Hethersett | NR9
Guide Price £395,000



This floorplan is only for illustrative purposes and is not to scale. Measurements of rooms, doors, windows, and any items are approximate and no responsibility is taken for any error, omission or mis-statement. Icons of items such as bathroom suites are representations only and may not look like the real items. Made with Made Snappy 360.

Energy Efficiency Rating		
	Current	Potential
Very energy efficient - lower running costs		
(92 plus) A		
(81-91) B		
(69-80) C		
(55-68) D		
(39-54) E		
(21-38) F		
(1-20) G		
Not energy efficient - higher running costs		
England & Wales		EU Directive 2002/91/EC

Disclaimer – In accordance with the Property Misdescriptions Act, the company gives notice that all descriptions, references to condition, necessary permissions for use and other details are given in good faith and believed to be correct, but any intending lessees do not rely on them as statements of fact, but must satisfy themselves by inspection or other means, as to their accuracy.



****GUIDE PRICE £395,000 - £425,000****

abbotFox presents this four bedroom semi-detached house located in the sought after village of Hethersett.

The ground floor hosts; an entrance hall, living room, large kitchen dining room with a breakfast bar, a utility room off of the kitchen and then a downstairs double bedroom and shower room.

Upstairs, the property benefits from three double bedrooms and main family bathroom.

Stepping outside, the property has an enclosed rear garden and parking for 2/3 cars on the driveway to the front.

The property is walking distance to amenities such as outstanding rated schools, dentists, doctors surgery, post office and supermarkets. There are also fantastic bus routes going into the Norwich City Centre every 15 minutes.

