

abbot**Fox**
Bespoke.



The Croft

Mattishall, NR20

“A sensitively restored and creative home with everyday life in mind.”

From our agent





Introduction

The Croft enjoys a generous plot and features a useful barn and triple garage.

Inside

Beneath its traditional facade, this four bedroom family home is comprised of creative and versatile rooms, designed with every day family life in mind.

Great attention has been paid to energy efficiency, the property benefiting from solar panels and thermal heating.

Of particular note is the stunning hand crafted Bryan Turner kitchen.

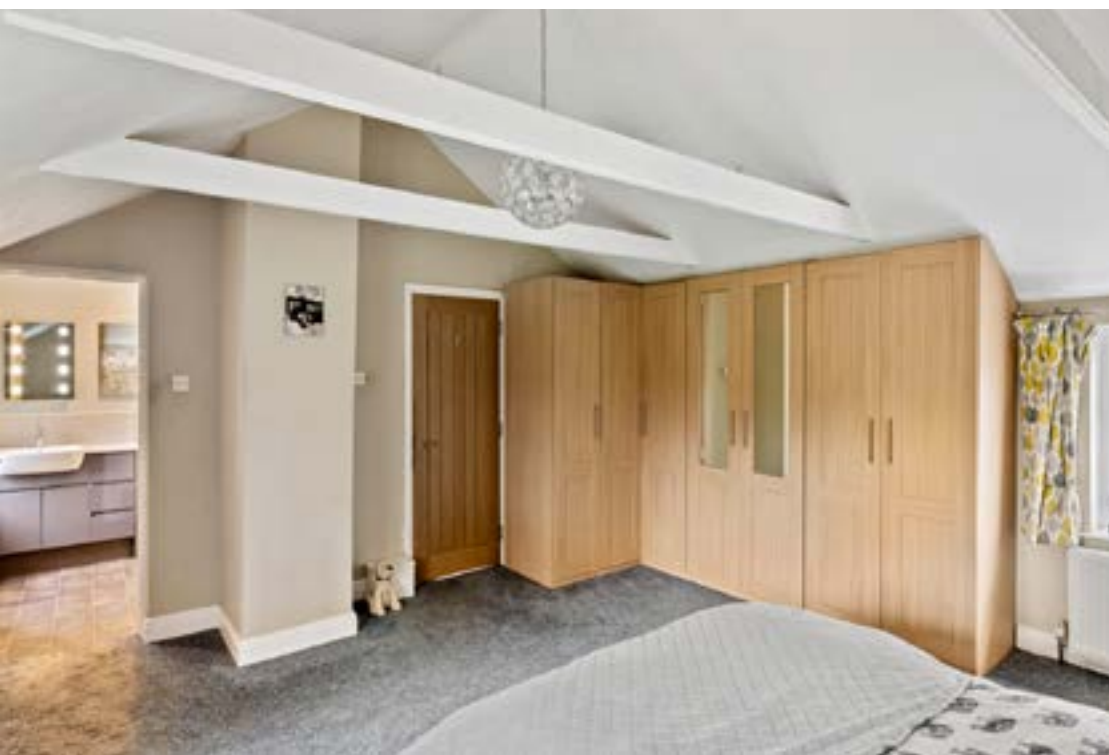
The first floor provides four double bedrooms, the guest and principal bedroom featuring en suites. There is a family bathroom off the landing also.

Outside

The property features a large garden mainly laid to lawn with a Scandinavian BBQ and hot tub included in the sale.

To the rear there is a tranquil area overlooking a pond which benefits from the evening sun, an idyllic spot for alfresco dining.

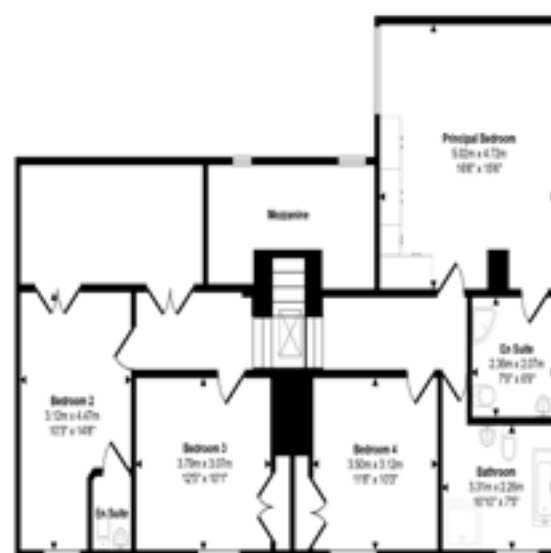
There is a single storey barn which is currently used as a workshop and gym. In addition to this there is a large triple garage.







Ground Floor



First Floor



Outbuilding



Garage

This floorplan is only for illustrative purposes and is not to scale. Measurements of rooms, doors, windows, and any items are approximate and no responsibility is taken for any error, omission or misstatement. Some of items such as bathroom suites are representative only and may not look like the real items. Speak with Estate Agency 383.

Location

Mattsihall is a quiet but well served Norfolk village located just over ten miles to the west of Norwich.

It's within easy reach of the A47, which connects it to the city centre and its suburbs, as well as the market towns of Dereham and Swaffham.

The village has a number of amenities including a Doctors Surgery, Post Office, popular Butchers and a golf club.

The North Norfolk coast is around an hour away by car.

Families

The property benefits from a good-sized garden which offers a good deal of privacy.

The village itself has an incredibly active community with a cricket club, bowels club, gym, allotments and several footpaths and circular walks around the village and the 12-mile walk from East Tuddenham to Mattishall is a popular route.

The nearby village of Honingham is home to The Goat Shed Farm Shop and Kitchen popular with families and the Honingham Buck pub.

There is a well regarded Primary School and secondary schools can be found in Dereham, Taverham and Reepham.



Our agent's view

"The Croft has such a lovely, joyful feel to it and the most stunning Bryan Turner kitchen, which really steals the show in my mind."

Samuel Le Good | Partner





abbot**Fox**
Bespoke.



Agent's Details



Samuel Le Good | Partner

samuellegood@abbotfox.co.uk | 01603 660000 | 07915 660981 | @samuellegood

Kingsley House
2a Upper King Street
Norwich
NR3 1AH



Disclaimer - In accordance with the Property Mis-descriptions Act, the company gives notice that all descriptions, references to condition, necessary permissions for use and other details are given in good faith and believed to be correct, but any intending lessees do not rely on them statements of fact, but must satisfy themselves by inspection or other means, as to their accuracy