

abbotFox



Dereham Road, Norwich
Guide Price £375,000

“

We are a team of genuine individuals who hold a deep passion for both property and marketing. Collectively, we bring over 70 years of experience in the property market of Norfolk and Suffolk. Our affection for both counties runs deep, and we are enthusiastic about sharing our passion with you.

Colin McKenzie | **Branch Partner**



THE DETAIL_____

abbotFox presents this deceptively spacious semi-detached family home, with adjoining annexe accommodation.

The main house offers a flexible layout, and has been thoughtfully extended by the current owners to offer generous living accommodation to the ground floor, which complements the three bedrooms and family bathroom to the first floor. The annexe accommodation allows for independent living for family members or potential for an income generator alongside the family home. The frontage allows for off road parking, whilst the generous rear garden backs onto playing fields and affords a high degree of privacy.

Guide price £375,000 - £400,000

Agents note:

The property is currently undergoing a programme of refurbishment works, with internal photography and floor plans to follow.

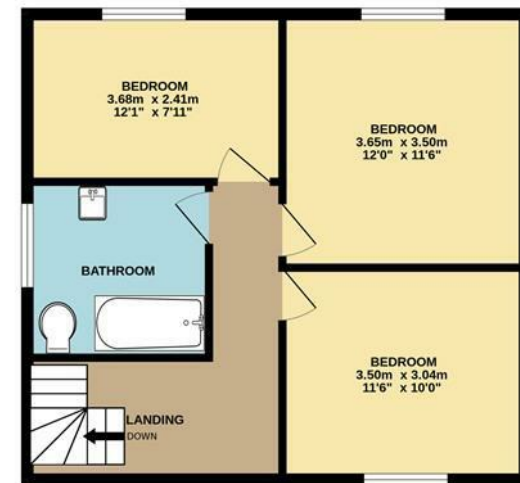
THE HIGHLIGHTS____

- Semi-detached family home with annexe accommodation
- Close to City Centre and local amenities
- Generous private gardens
- Ideal family home
- Extended living accommodation
- Viewing advised
- Guide Price £375,000 - £400,000

GROUND FLOOR



1ST FLOOR



Whilst every attempt has been made to ensure the accuracy of the floorplan contained here, measurements of doors, windows, rooms and any other items are approximate and no responsibility is taken for any error, omission or mis-statement. This plan is for illustrative purposes only and should be used as such by any prospective purchaser. The services, systems and appliances shown have not been tested and no guarantee as to their operability or efficiency can be given.

Made with Metacore 2009E

Let's talk

01603 660000

sales@abbotfox.co.uk

@abbotfox

EPC RATING - D

Disclaimer – In accordance with the Property Misdescriptions Act, the company abbotFox gives notice that all descriptions, references to condition, necessary permissions for use and other details are given in good faith and believed to be correct, but any purchaser should not rely on them as statements of fact, and must satisfy themselves by inspection or other means, as to their accuracy.