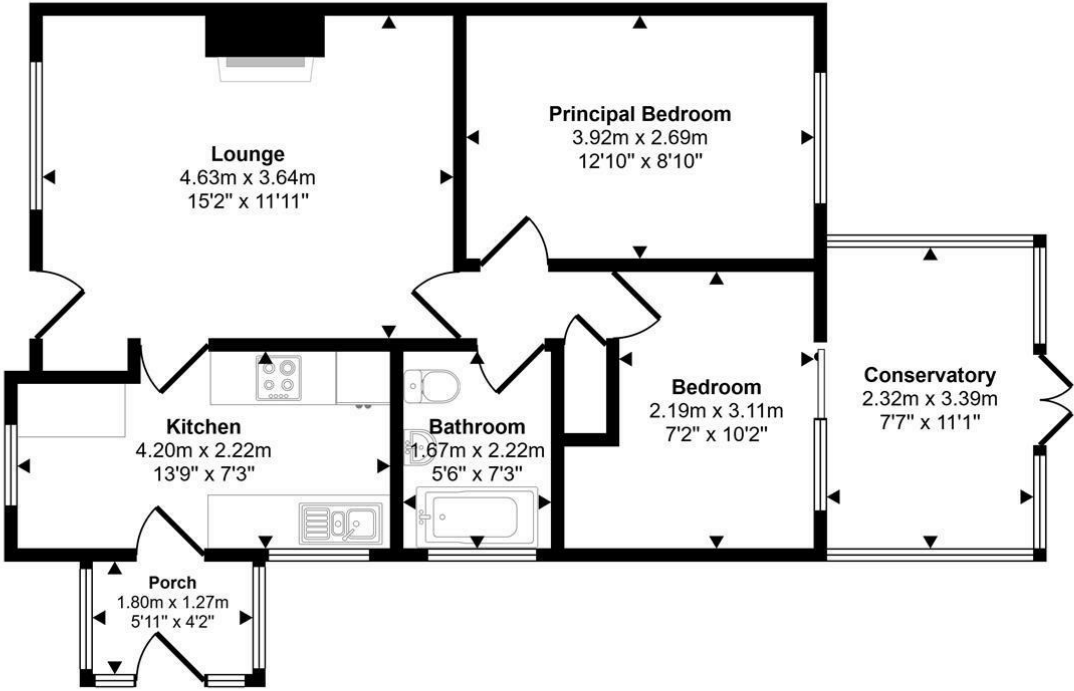


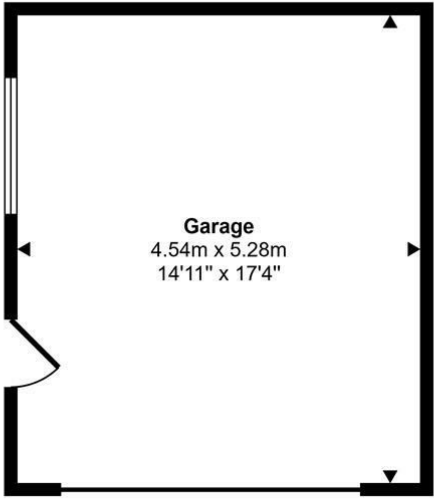


Chapel Close | Norwich | NR10
Guide Price £250,000

Approx Gross Internal Area
88 sq m / 945 sq ft




Ground Floor
Approx 64 sq m / 687 sq ft



Storage Room
Approx 24 sq m / 258 sq ft

This floorplan is only for illustrative purposes and is not to scale. Measurements of rooms, doors, windows, and any items are approximate and no responsibility is taken for any error, omission or mis-statement. Icons of items such as bathroom suites are representations only and may not look like the real items. Made with Made Snappy 360.

Energy Efficiency Rating		Current	Potential
Very energy efficient - lower running costs		<div>60</div>	<div>88</div>
(92 plus) A			
(81-91) B			
(69-80) C			
(55-68) D			
(39-54) E			
(21-38) F			
(1-20) G			
Not energy efficient - higher running costs			
England & Wales		EU Directive 2002/91/EC	

Disclaimer – In accordance with the Property Misdescriptions Act, the company gives notice that all descriptions, references to condition, necessary permissions for use and other details are given in good faith and believed to be correct, but any intending lessees do not rely on them as statements of fact, but must satisfy themselves by inspection or other means, as to their accuracy.

abbotFox presents this chain free, semi-detached bungalow. Set within a quiet close on the edges of the popular market town of Reepham, this home is an ideal opportunity for any buyer looking to enjoy life on one level.

Internally, the property offers neatly arranged accommodation comprising; entrance porch, kitchen, lounge diner, two bedrooms, family bathroom and a generous conservatory. Sitting on a corner plot, the rear gardens afford a high degree of privacy, with the property also offering a spacious detached garage and off road parking.

An internal viewing comes highly recommended.

Guide Price £250,000 - £260,000

