

abbotFox



Old Catton, NR6
Guide Price £145,000

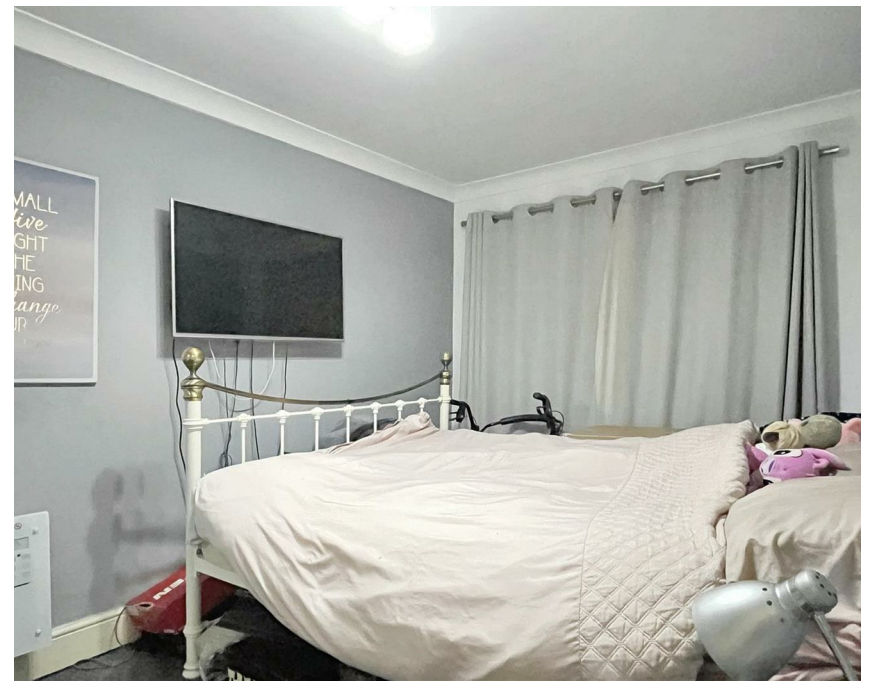
“

We are a team of genuine individuals who hold a deep passion for both property and marketing. Collectively, we bring over 70 years of experience in the property market of Norfolk and Suffolk. Our affection for both counties runs deep, and we are enthusiastic about sharing our passion with you.

Colin McKenzie | **Branch Partner**







THE DETAIL_____

abbotFox presents this generously proportioned first floor apartment. Accessed via a private entrance with a storage / utility room on the ground floor, the property internally offers a spacious open plan living kitchen area, two double bedrooms and a spacious family bathroom. Set within the sought after area of Old Catton, this home affords a high degree of convenience with a wealth of local amenities available within easy reach. An ideal opportunity for any first time buyer, an internal viewing comes highly recommended.

Agents Note:

Please be aware we are awaiting confirmation of the lease length and associated charges for this property.

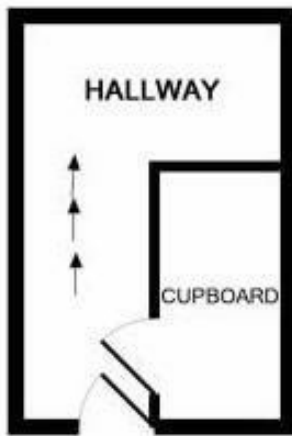
Guide Price £145,000 - £155,000



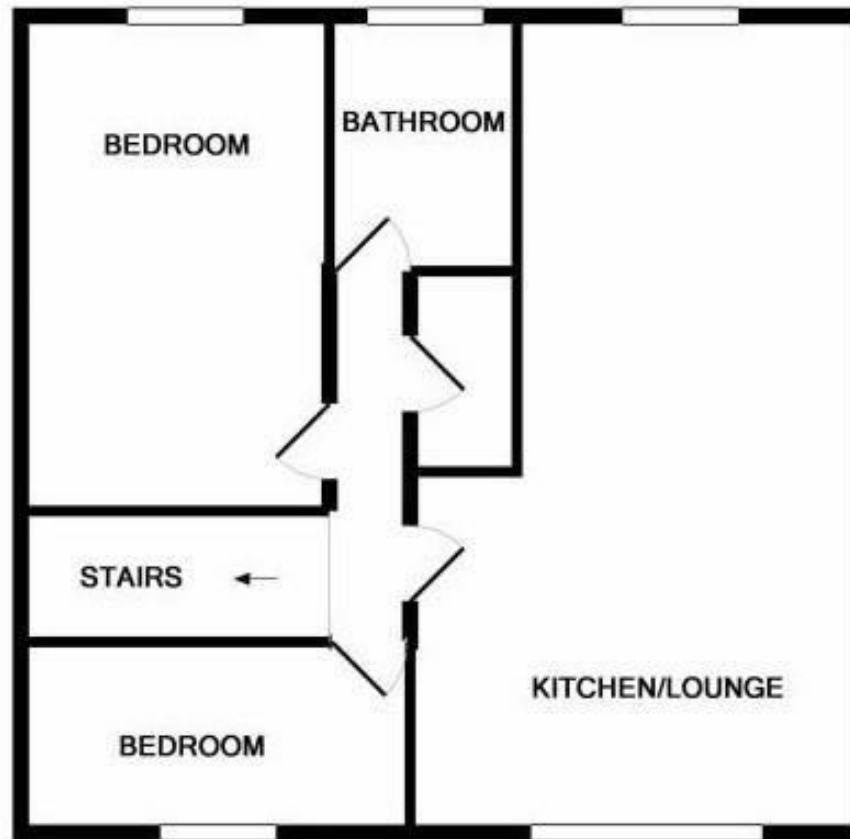


THE HIGHLIGHTS____

- First floor apartment with private entrance
- Two double bedrooms
- Generous living accommodation
- Convenient location
- Ideal first time buy
- Viewing advised
- £140,000 - £155,000



GROUND FLOOR
APPROX. FLOOR
AREA 101 SQ.FT.
(9.4 SQ.M.)



1ST FLOOR
APPROX. FLOOR
AREA 593 SQ.FT.
(55.1 SQ.M.)

TOTAL APPROX. FLOOR AREA 694 SQ.FT. (64.5 SQ.M.)

Whilst every attempt has been made to ensure the accuracy of the floor plan contained here, measurements of doors, windows, rooms and any other items are approximate and no responsibility is taken for any error, omission, or mis-statement. This plan is for illustrative purposes only and should be used as such by any prospective purchaser. The services, systems and appliances shown have not been tested and no guarantee as to their operability or efficiency can be given.

Made with Metropix ©2018

Let's talk

01603 660000

sales@abbotfox.co.uk

@abbotfox

EPC RATING - D

Disclaimer – In accordance with the Property Misdescriptions Act, the company abbotFox gives notice that all descriptions, references to condition, necessary permissions for use and other details are given in good faith and believed to be correct, but any purchaser should not rely on them as statements of fact, and must satisfy themselves by inspection or other means, as to their accuracy.