

abbotFox





Flat 45, Skipper House, Norwich, NR1  
*Guide Price £300,000*

“

We are a team of genuine individuals who hold a deep passion for both property and marketing. Collectively, we bring over 70 years of experience in the property market of Norfolk and Suffolk. Our affection for both counties runs deep, and we are enthusiastic about sharing our passion with you.

Colin McKenzie | **Branch Partner**













## THE DETAIL\_\_\_\_\_

abbotFox presents this stunning two bedroom top floor apartment located within a unique city centre development.

The apartment consists of two generous bedrooms, bathroom, a substantial open plan kitchen/diner/living space with access to a stunning west facing wrap around balcony with unmatched views of Norwich's skyline including the cathedral and castle.

Situated in the heart of Norwich with transport links via Norwich bus station and train station within close proximity. Skipper House benefits from an enviable position on Ber Street Norwich, sitting in a prominent elevated location overlooking the city.

Guide price £300,000-£325,000





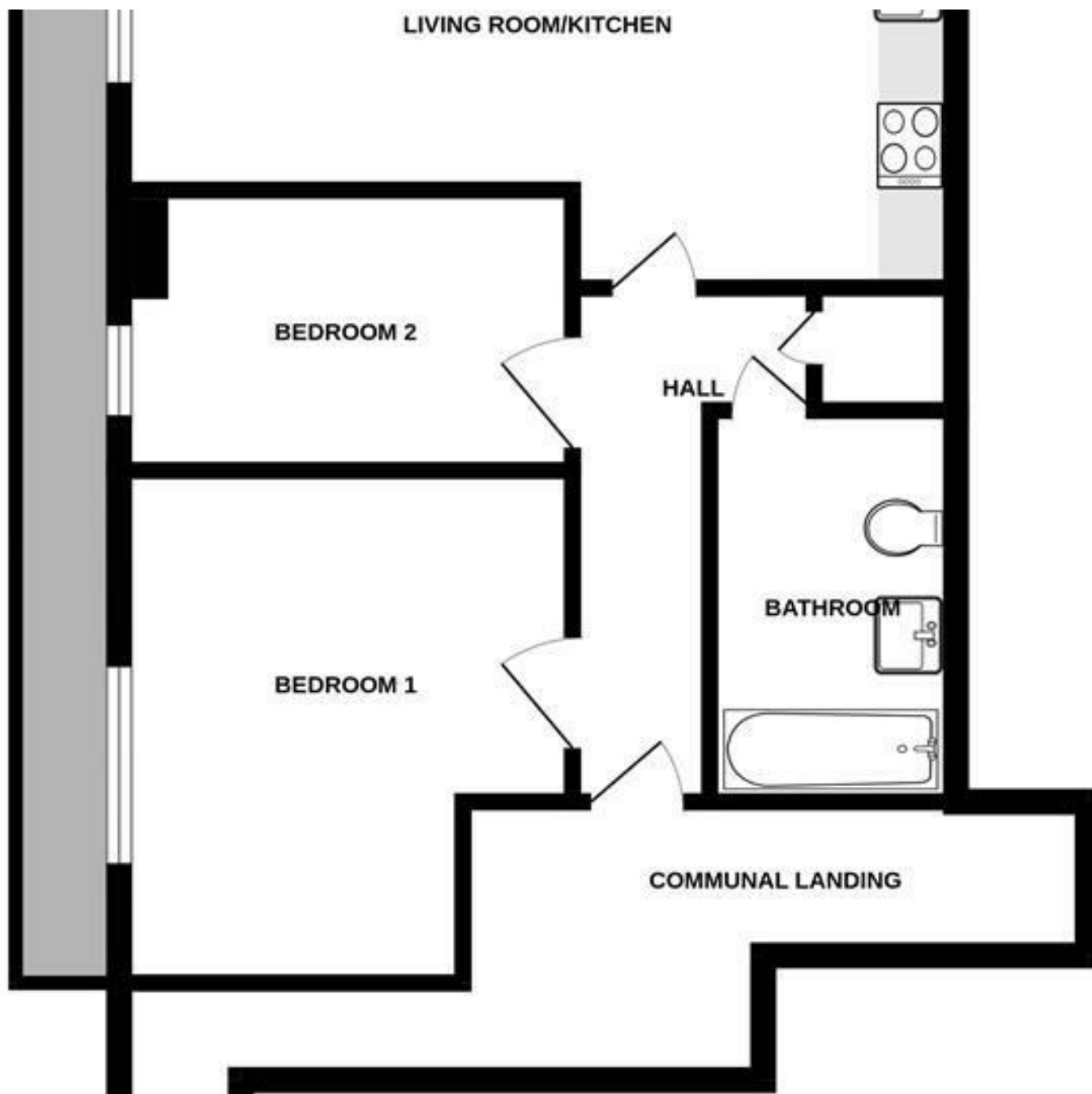






## THE HIGHLIGHTS\_\_

- Guide price £300,000-£325,000
- Two bedroom top floor apartment
- Wrap around balcony
- City centre location
- High specification fixtures and fittings
- Lift to all floors
- Secure video intercom
- Smart WiFi underfloor heating
- Secure underground car park space



*Let's talk*

01603 660000

[sales@abbotfox.co.uk](mailto:sales@abbotfox.co.uk)

@abbotfox

EPC RATING - D

Disclaimer – In accordance with the Property Misdescriptions Act, the company abbotFox gives notice that all descriptions, references to condition, necessary permissions for use and other details are given in good faith and believed to be correct, but any purchaser should not rely on them as statements of fact, and must satisfy themselves by inspection or other means, as to their accuracy.