

abbotFox



Ormesby Road, Badersfield
Guide Price £190,000

“

We are a team of genuine individuals who hold a deep passion for both property and marketing. Collectively, we bring over 70 years of experience in the property market of Norfolk and Suffolk. Our affection for both counties runs deep, and we are enthusiastic about sharing our passion with you.

Colin McKenzie | **Branch Partner**







THE DETAIL_____

abbotFox presents this spacious two bedroom end terraced house. Set within the popular area of Badersfield, this home is ideally located within easy reach of local amenities.

The accommodation is neatly arranged over two floors, with the ground floor comprising, an entrance hall, lounge and kitchen diner. The first floor offers two generous double bedrooms, a family bathroom and separate WC. Externally the rear gardens afford a high degree of privacy and benefit from a brick-built secure out-building.

The property could make an ideal investment opportunity with a tenant in situ, or would suit a first time buyer looking to take their first steps onto the property ladder. An internal viewing comes highly recommended.

Guide price - £190,000 - £200,000



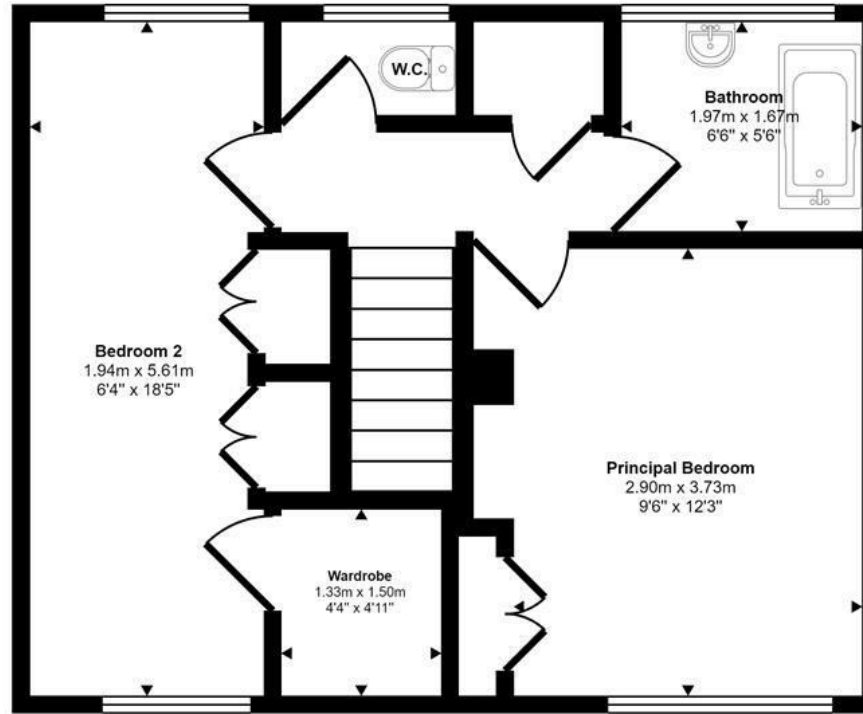
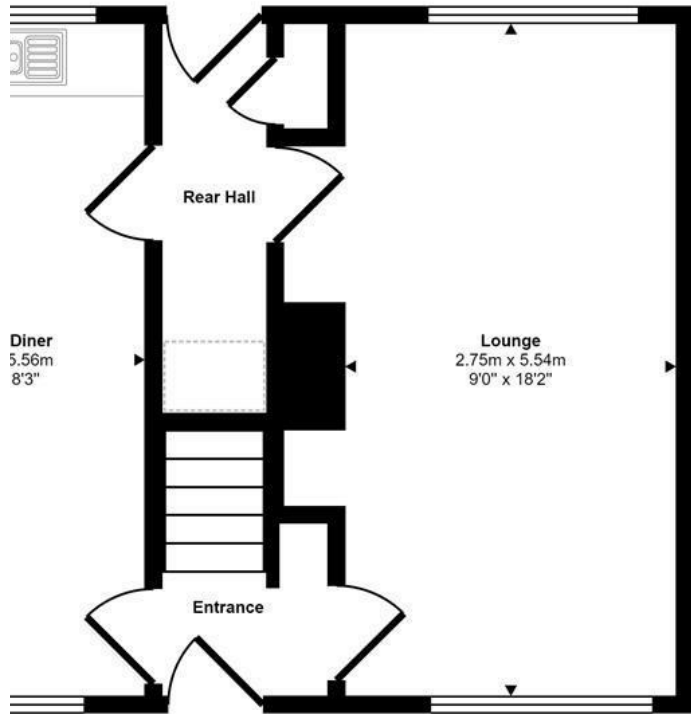




THE HIGHLIGHTS__

- Two bedroom end terraced house
- Generous living accommodation
- Popular residential location
- Close to local amenities
- Internal viewing advised

Approx Gross Internal Area
81 sq m / 873 sq ft



First Floor

Approx 39 sq m / 418 sq ft

Storage R

Approx 4 sq m

ft

height below 1.5m

This floorplan is only for illustrative purposes and is not to scale. Measurements of rooms, doors, windows, and any items are approximate and no responsibility is taken for any error, omission or mis-statement. Icons of items such as bathroom suites are representations only and may not look like the real items. Made with Made Snappy 360.

Let's talk

01603 660000

sales@abbotfox.co.uk

@abbotfox

EPC RATING -

Disclaimer – In accordance with the Property Misdescriptions Act, the company abbotFox gives notice that all descriptions, references to condition, necessary permissions for use and other details are given in good faith and believed to be correct, but any purchaser should not rely on them as statements of fact, and must satisfy themselves by inspection or other means, as to their accuracy.