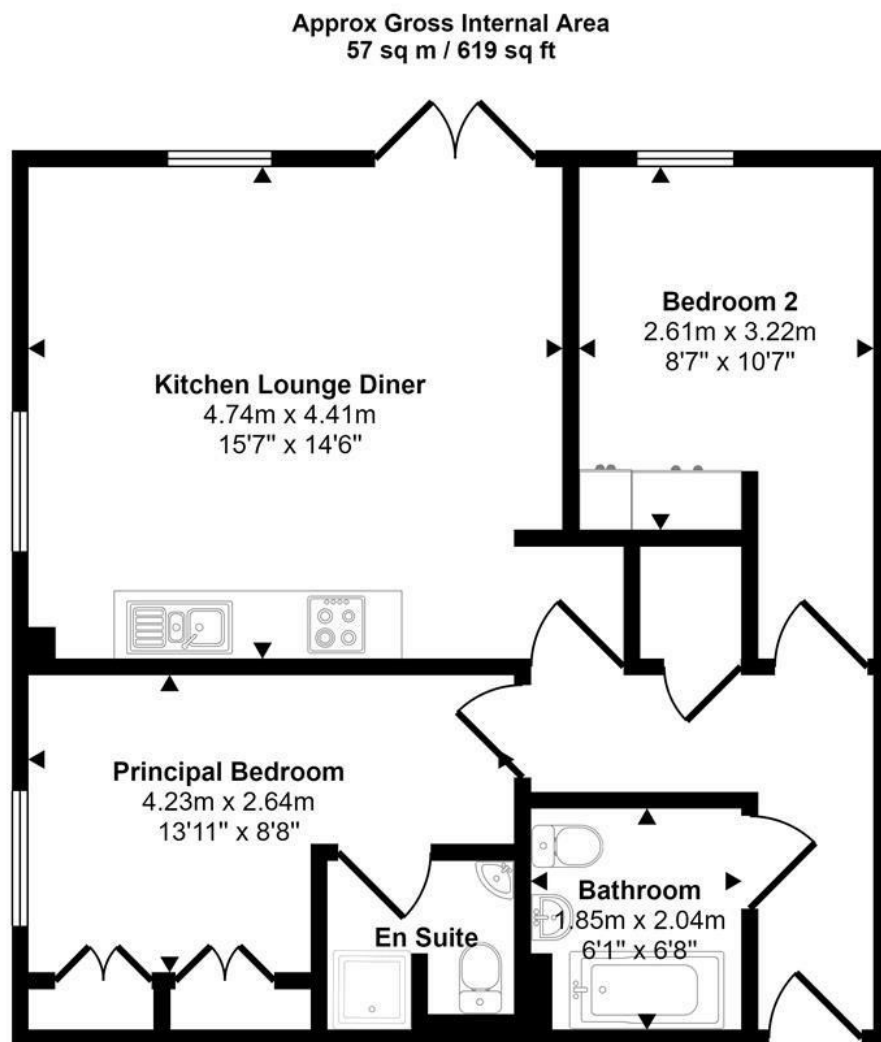




Wherry Road | Norwich | NR1
£180,000

abbotFox



Floorplan

This floorplan is only for illustrative purposes and is not to scale. Measurements of rooms, doors, windows, and any items are approximate and no responsibility is taken for any error, omission or mis-statement. Icons of items such as bathroom suites are representations only and may not look like the real items. Made with Made Snappy 360.

Energy Efficiency Rating		
	Current	Potential
Very energy efficient - lower running costs		
(92 plus) A		
(81-91) B	81	81
(69-80) C		
(55-68) D		
(39-54) E		
(21-38) F		
(1-20) G		
Not energy efficient - higher running costs		
England & Wales	EU Directive 2002/91/EC	

Disclaimer – In accordance with the Property Misdescriptions Act, the company gives notice that all descriptions, references to condition, necessary permissions for use and other details are given in good faith and believed to be correct, but any intending lessees do not rely on them as statements of fact, but must satisfy themselves by inspection or other means, as to their accuracy.



abbotFox presents this spacious first floor, purpose built apartment, set within the popular Riverside development, which is within easy reach of the Train station, Norwich City Centre and a wealth of amenities. The internal accommodation is neatly arranged and comprises; an inviting entrance hall, with secure telephone entry point, dual aspect open plan living accommodation, two double bedrooms, en-suite shower room and family bathroom. The property further benefits from a secure, allocated parking space. With a convenience hard to match, this home would make an ideal opportunity for any first time buyer or buy-to-let investor. An internal viewing comes highly recommended.

Guide price £180,000 - £185,000

