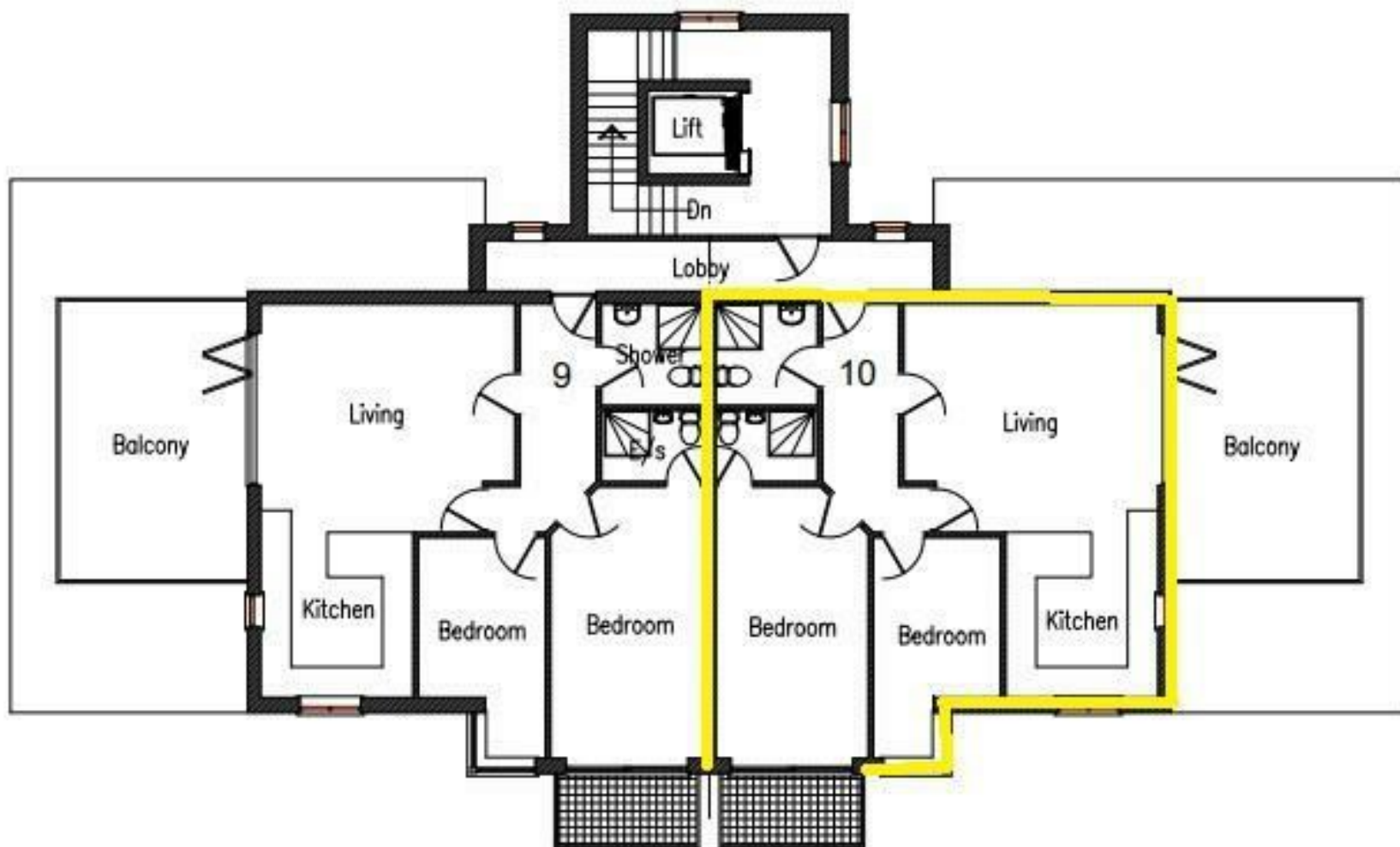




Bridge Road | Great Yarmouth | NR30
 £279,000

abbotFox



Energy Efficiency Rating		
	Current	Potential
<i>Very energy efficient - lower running costs</i>		
(92 plus) A		
(81-91) B		
(69-80) C		
(55-68) D		
(39-54) E		
(21-38) F		
(1-20) G		
<i>Not energy efficient - higher running costs</i>		
England & Wales	EU Directive 2002/91/EC	

Disclaimer – In accordance with the Property Misdescriptions Act, the company gives notice that all descriptions, references to condition, necessary permissions for use and other details are given in good faith and believed to be correct, but any intending lessees do not rely on them as statements of fact, but must satisfy themselves by inspection or other means, as to their accuracy.



abbotFox Land & New Homes presents 'River Gardens' a purpose built development overlooking the river Bure with allocated outside garden spaces. River Gardens is conveniently located in a historically significant position overlooking the river Bure and medieval town wall tower.

Early reservation enquires available for two penthouse apartments which feature vaulted ceilings in the living space and large roof terraces with panoramic views of the Bure valley and historical town of Great Yarmouth. Both with two bedrooms, principal bedroom with ensuite and balcony, shower room and open plan living space.

The most unique selling feature of the River Gardens development, is an allocated outside garden space reaching down to the river Bure. Each flat also benefits from one allocated parking space and allocated undercroft storage area.

