

abbotFox





Thorpe End, NR13  
*Guide £225,000*

“

We are a team of genuine individuals who hold a deep passion for both property and marketing. Collectively, we bring over 70 years of experience in the property market of Norfolk and Suffolk. Our affection for both counties runs deep, and we are enthusiastic about sharing our passion with you.

Colin McKenzie | **Branch Partner**











## THE DETAIL\_\_\_\_\_

abbotFox presents this attractive end terrace cottage in the highly desirable village of Thorpe End.

Generously proportioned accommodation briefly comprises; entrance hall, sitting room, dining room, kitchen breakfast room and a ground floor bathroom.

The first floor provides three bedrooms.

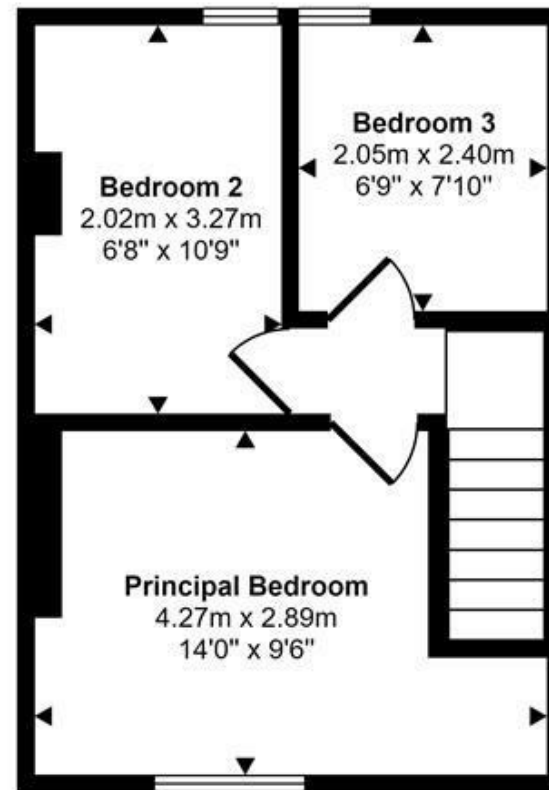
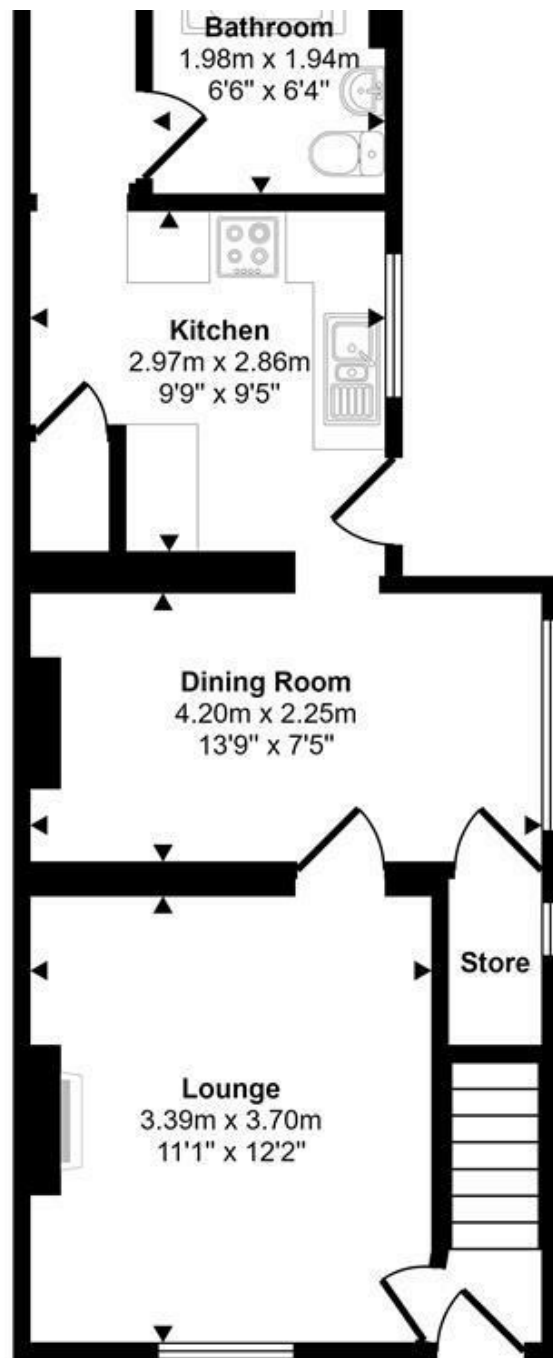
Outside, there is parking to the front and an enclosed, private rear garden.

Guide £225,000 - £235,000



## THE HIGHLIGHTS\_\_\_\_

- Three bedrooms
- Two reception rooms
- Kitchen breakfast room
- Parking to the front
- Private enclosed rear garde
- No onward chain
- Guide £225,000 - £235,000



*Let's talk*

01603 660000

[sales@abbotfox.co.uk](mailto:sales@abbotfox.co.uk)

@abbotfox

**EPC RATING -**

Disclaimer – In accordance with the Property Misdescriptions Act, the company abbotFox gives notice that all descriptions, references to condition, necessary permissions for use and other details are given in good faith and believed to be correct, but any purchaser should not rely on them as statements of fact, and must satisfy themselves by inspection or other means, as to their accuracy.