

abbotFox

High Street, NR11

Stunning Edwardian family home

High Street, NR11

Stunning Edwardian family home

abbotFox Bespoke presents this stunning Edwardian family home.

Set on a generous plot, and affording Sea views, this home has been thoughtfully remodelled and sympathetically improved by the current owners to an exceptional standard. The accommodation is arranged over three floors and offers a high degree of flexibility in its layout.

The ground floor comprises; an inviting entrance hall, lounge, formal dining room, kitchen breakfast room with a 4 oven aga as well as a fan oven, utility room, sun room, cloakroom and shower room. The first floor offers three comfortable double bedrooms, with the principal bedroom also offering a spacious dressing room, en-suite and a stylish family bathroom. The top floor benefits from three further bedrooms, and would make an ideal space for those looking to work from home with stunning sea views.

Externally, the property benefits from ample off road parking to the front, with an adjoining garage. The spacious rear garden is mostly laid to lawn and affords a high degree of privacy. The current owners have created an allotment area which offers raised vegetable beds and a variety of fruit trees.

The property is a mere 3 minute walk to the centre of Mundesley and a 10 minute walk to the beach.

Properties of this space and calibre are rarely available, with an internal viewing highly recommended.

KEY FEATURES

- Edwardian semi-detached house
- Stunning sea views
- Six bedrooms
- Generous living accommodation
- Mature, private rear gardens
- Close to local amenities
- No onward chain
- Viewing advised

SITUATION

Mundesley is a popular Norfolk Coastal village located just 20 miles northeast from the City of Norwich. The village has a good selection of amenities including a Post Office, pharmacy, convenience stores, fish and chip shops, cafes, public houses and the Mundesley Golf Course. Schooling for all ages is available from Mundesley Infant and Mundesley Junior School with secondary education on offer from North Walsham High School.

Bus routes run regularly to Norwich with train links available from the nearby towns of Cromer and North Walsham. From Norwich further rail links are on offer with destinations such as London Liverpool Street and Cambridge. To the north of Norwich is Norwich International Airport with flights to a variety of domestic and international destinations.

SERVICES

Boiler and radiators, mains gas, mains water

LOCAL AUTHORITY

North Norfolk Council

COUNCIL TAX BAND

E

TENURE

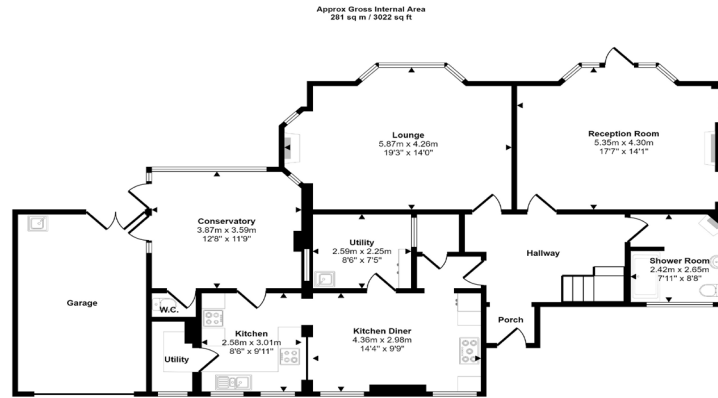
Freehold



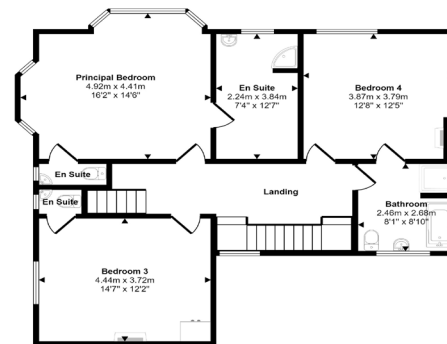


High Street, NR11

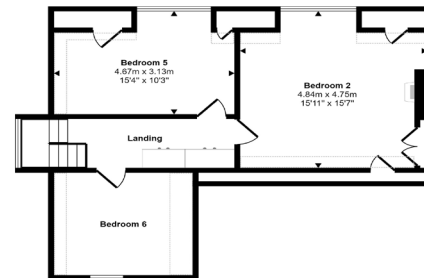
Stunning Edwardian family home



Ground Floor
Approx 134 sq m / 1440 sq ft



First Floor
Approx 85 sq m / 918 sq ft



Second Floor
Approx 62 sq m / 665 sq ft

□ Denotes head height below 1.5m

Disclaimer - In accordance with the Property Misdescriptions Act, the company gives notice that all descriptions, references to condition, necessary permissions for use and other details are given in good faith and believed to be correct, but any intending purchasers do not rely on them as statements of fact, but must satisfy themselves by inspection or other means, as to their accuracy.



abbotFox Norwich Branch
01603 660000
sales@abbotfox.co.uk