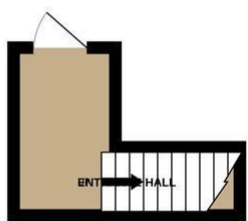




Castle Meadow | Norwich | NR1
£499,000

abbotFox

1ST FLOOR



2ND FLOOR



Energy Efficiency Rating		
	Current	Potential
Very energy efficient - lower running costs		
(92 plus) A		
(81-91) B		
(69-80) C		
(55-68) D		
(39-54) E		
(21-38) F		
(1-20) G		
Not energy efficient - higher running costs		
England & Wales		EU Directive 2002/91/EC

Disclaimer – In accordance with the Property Misdescriptions Act, the company gives notice that all descriptions, references to condition, necessary permissions for use and other details are given in good faith and believed to be correct, but any intending lessees do not rely on them as statements of fact, but must satisfy themselves by inspection or other means, as to their accuracy.

Whilst every attempt has been made to ensure the accuracy of the floorplan contained here, measurements of doors, windows, rooms and any other items are approximate and no responsibility is taken for any error, omission or mis-statement. This plan is for illustrative purposes only and should be used as such by any prospective purchaser. The services, systems and appliances shown have not been tested and no guarantee as to their operability or efficiency can be given.
Made with Metropix ©2024



abbotFox presents this mixed use building, comprising of both residential accommodation and commercial unit. Occupying a prominent position on Castle Meadow, this building is located within the heart of Norwich City Centre and a wide variety of national and independent retailers.

The shop comprises ground floor with the basement for storage and toilet and shower facilities.

There are new and refurbished wooden floors in each flat.

With the building currently fully occupied, this opportunity allows for an immediate return on investment for any buyer. For further information, please contact the sales team.

The building comprises;
Commercial unit - approx. 773sqft
First floor apartment - approx.. 343sqft
Second floor apartment - approx. 469sqft
Total approx. floor area 1584sqft

