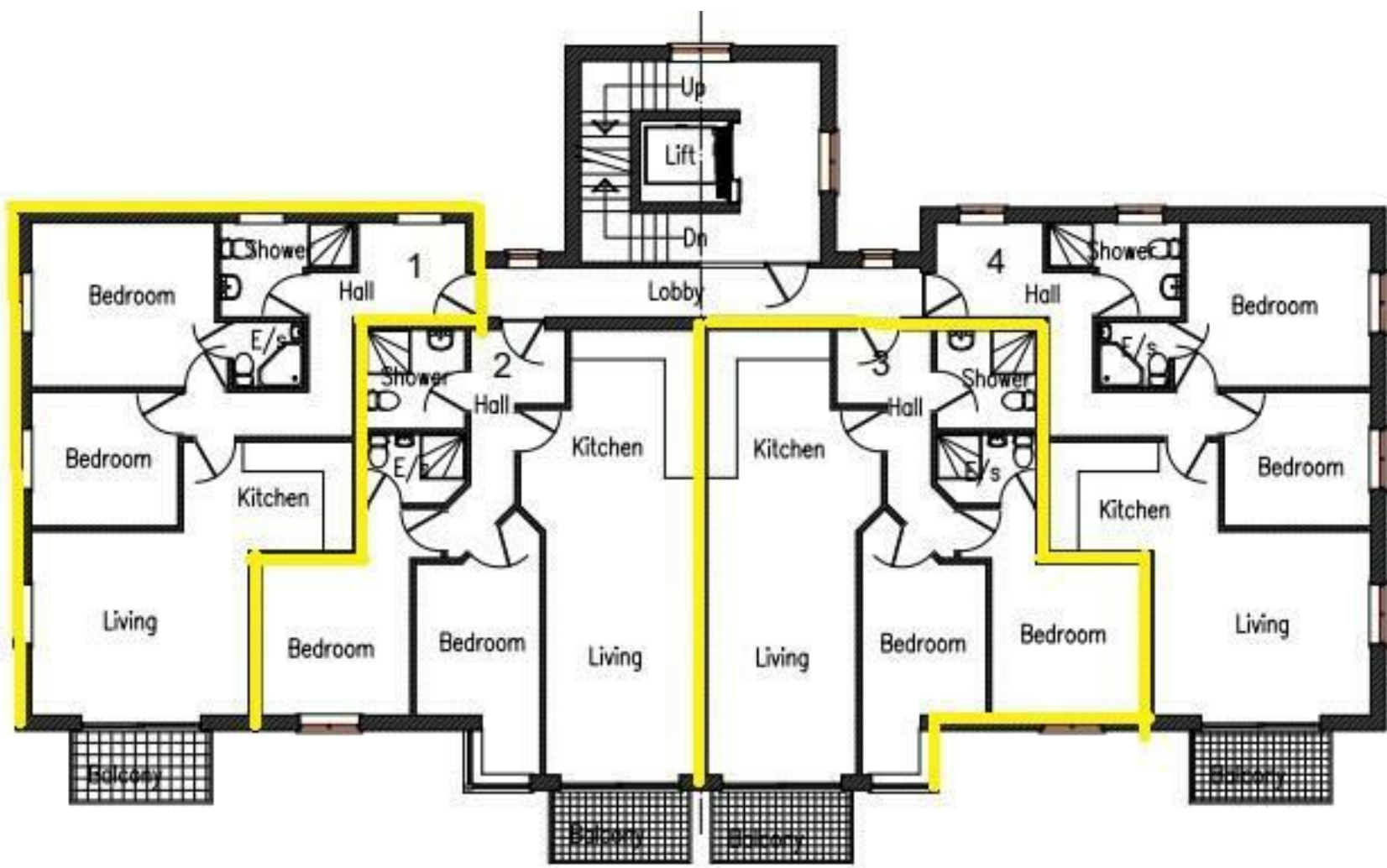




Bridge Road | Great Yarmouth | NR30
 £200,000

abbotFox



| Energy Efficiency Rating | | |
|--|---------|-------------------------|
| | Current | Potential |
| <i>Very energy efficient - lower running costs</i> | | |
| (92 plus) A | | |
| (81-91) B | | |
| (69-80) C | | |
| (55-68) D | | |
| (39-54) E | | |
| (21-38) F | | |
| (1-20) G | | |
| <i>Not energy efficient - higher running costs</i> | | |
| England & Wales | | EU Directive 2002/91/EC |

Disclaimer – In accordance with the Property Misdescriptions Act, the company gives notice that all descriptions, references to condition, necessary permissions for use and other details are given in good faith and believed to be correct, but any intending lessees do not rely on them as statements of fact, but must satisfy themselves by inspection or other means, as to their accuracy.



abbotFox Land & New Homes presents 'River Gardens' a purpose built development overlooking the river Bure with allocated outside garden spaces. River Gardens is conveniently located in a historically significant position overlooking the river Bure and medieval town wall tower.

Early reservation enquires available for eight spacious two bedroom apartments with balconies overlooking the river Bure. Each with two bedrooms, open plan kitchen/living space, ensuites & shower room. This locally based, independent developer sources all internal finishes from quality control renowned suppliers.

The most unique selling feature of the River Gardens development, is an allocated outside garden space reaching down to the river Bure. Each flat also benefits from one allocated parking space and allocated undercroft storage area.

