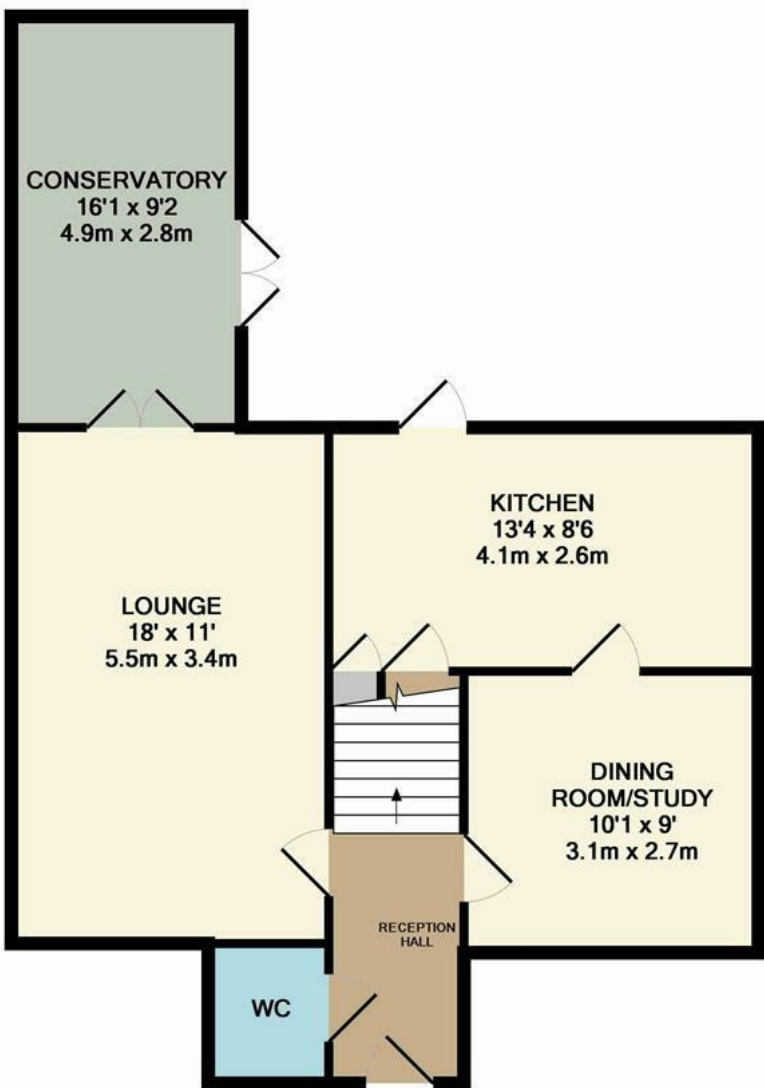


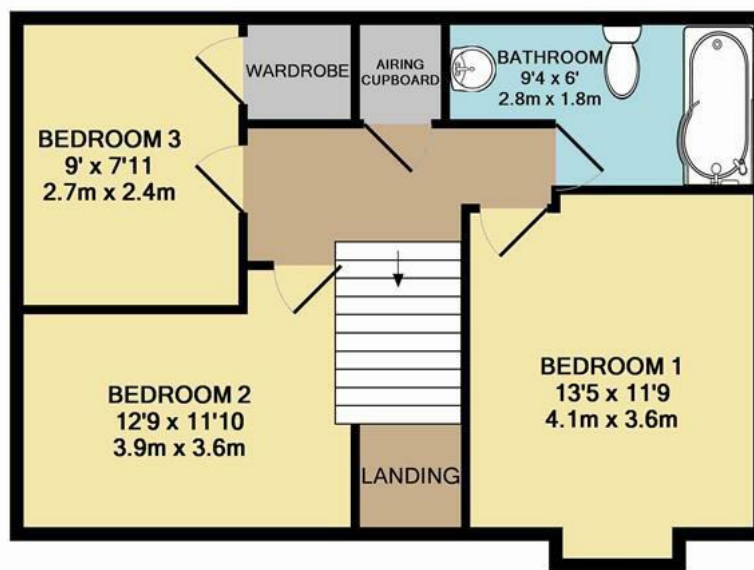


Exmouth Close | Hethersett | NR9  
PCM £1,600 PCM

abbotFox



GROUND FLOOR



1ST FLOOR

Whilst every attempt has been made to ensure the accuracy of the floor plan contained here, measurements of doors, windows, rooms and any other items are approximate and no responsibility is taken for any error, omission, or mis-statement. This plan is for illustrative purposes only and should be used as such by any prospective purchaser. The services, systems and appliances shown have not been tested and no guarantee as to their operability or efficiency can be given  
Made with Metropix ©2016

Energy Efficiency Rating		
	Current	Potential
Very energy efficient - lower running costs		
(92 plus) A		
(81-91) B		
(69-80) C		
(55-68) D	60	72
(39-54) E		
(21-38) F		
(1-20) G		
Not energy efficient - higher running costs		
England & Wales		EU Directive 2002/91/EC

Disclaimer – In accordance with the Property Misdescriptions Act, the company gives notice that all descriptions, references to condition, necessary permissions for use and other details are given in good faith and believed to be correct, but any intending lessees do not rely on them as statements of fact, but must satisfy themselves by inspection or other means, as to their accuracy.



**\*\*\*Undergoing Renovation\*\*\*** abbotFox presents this beautifully presented detached house pleasantly positioned on a generous plot in the popular village of Hethersett. Accommodation features an 18' lounge dining room, study/dining area, ground floor WC, three bedrooms and bathroom to the first floor. To the outside the property is set back from the road and offers a generous driveway with off road parking, single garage and an enclosed rear garden.

The popular village of Hethersett is located south of Norwich and provides easy access to the A47 and A11. The village is served by a range of schools for all ages, public houses, popular restaurants, library and regular bus services into Norwich and Wymondham. Hethersett is located south of Norwich and provides easy access to the A47 and A11. The village is served by a range of schools for all ages, public houses, popular restaurants, library and regular bus services into Norwich and Wymondham.

