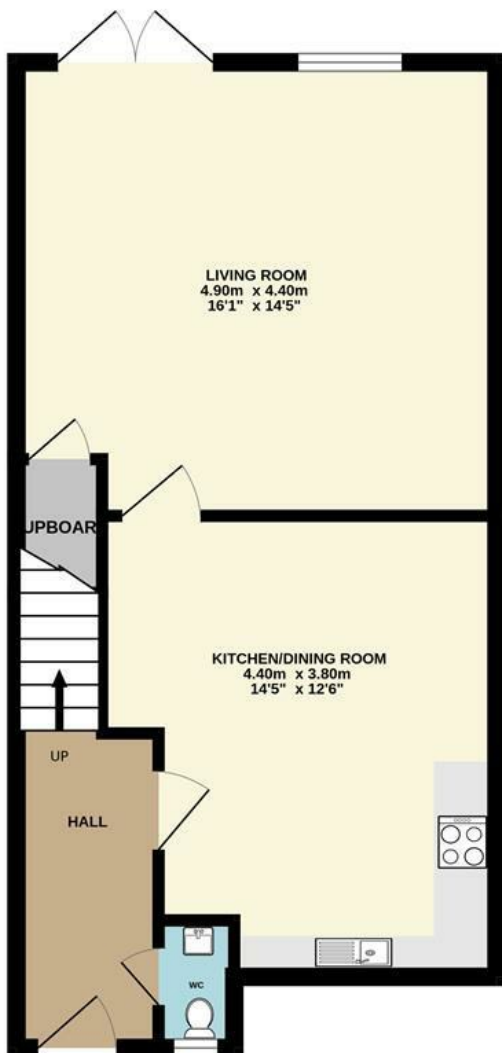




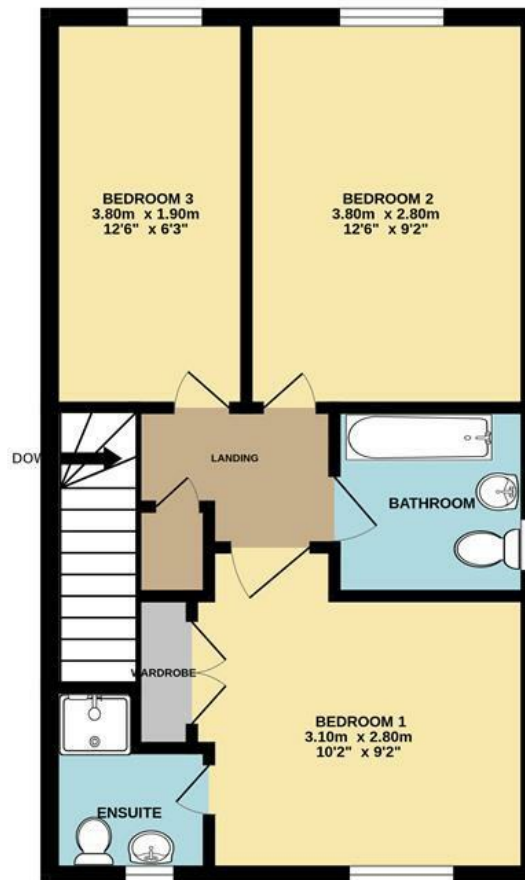
Mill Croft Close | Norwich | NR5  
 Guide Price £285,000

abbotFox

GROUND FLOOR



1ST FLOOR



Energy Efficiency Rating		Current	Potential
Very energy efficient - lower running costs			
(92 plus) A			
(81-91) B			
(69-80) C			
(55-68) D			
(39-54) E			
(21-38) F			
(1-20) G			
Not energy efficient - higher running costs			
<b>England &amp; Wales</b>		EU Directive 2002/91/EC	

Disclaimer – In accordance with the Property Misdescriptions Act, the company gives notice that all descriptions, references to condition, necessary permissions for use and other details are given in good faith and believed to be correct, but any intending lessees do not rely on them as statements of fact, but must satisfy themselves by inspection or other means, as to their accuracy.

Whilst every attempt has been made to ensure the accuracy of the floorplan contained here, measurements of doors, windows, rooms and any other items are approximate and no responsibility is taken for any error, omission or mis-statement. This plan is for illustrative purposes only and should be used as such by any prospective purchaser. The services, systems and appliances shown have not been tested and no guarantee as to their operability or efficiency can be given.  
 Made with Metropix ©2024





abbotFox Land & New Homes presents this spacious three bedroom new build home, one of just three being built in the popular west Norwich suburb, Costessey within easy reach of the A47 and Norwich city centre.

Generous accommodation is arranged over two floors and comprises an entrance hall, kitchen dining room and a good size lounge that overlooks and opens out into the rear garden.

The first floor provides three bedrooms the principal bedroom benefits from an en suite shower room. There is a bathroom off of the landing also.

Further details on expected completion dates can be provided upon request.

