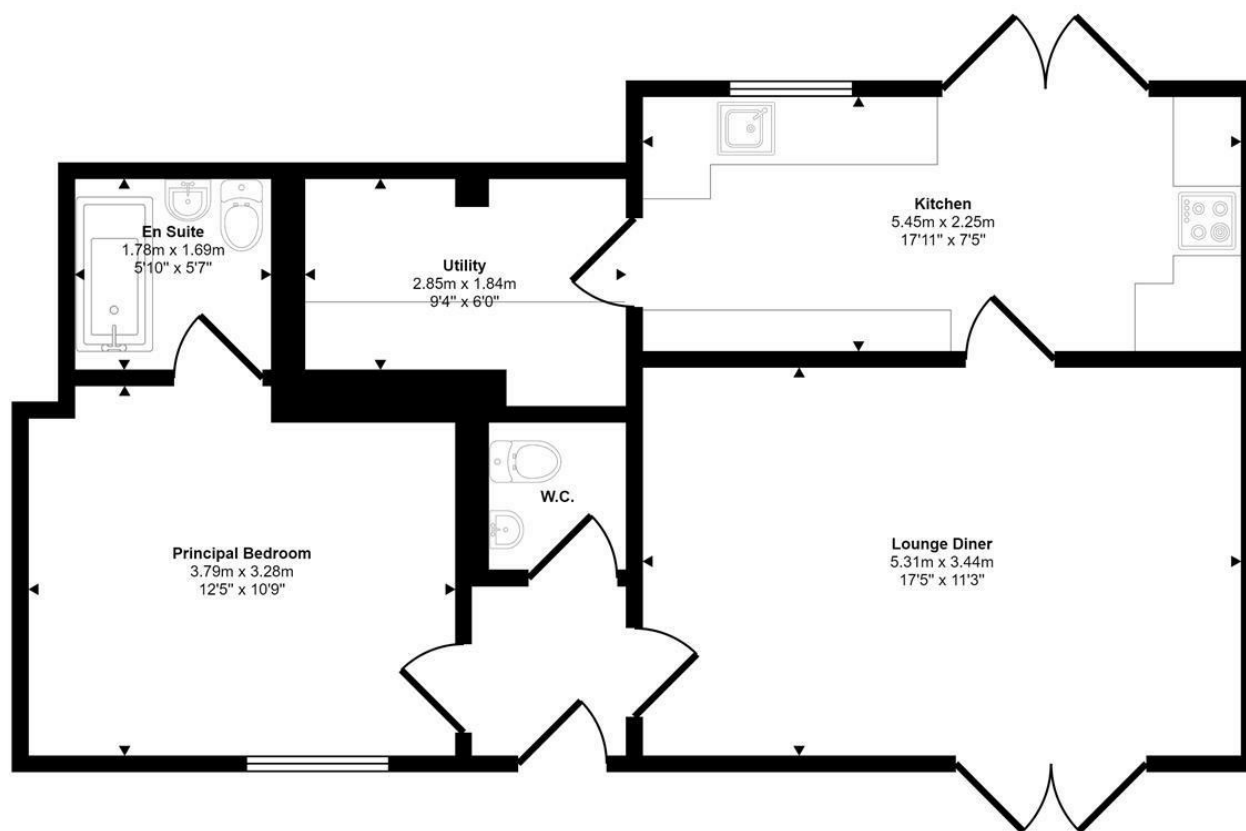




Coast Road | Norwich | NR12
£180,000

abbotFox

Approx Gross Internal Area
59 sq m / 631 sq ft



Floorplan

This floorplan is only for illustrative purposes and is not to scale. Measurements of rooms, doors, windows, and any items are approximate and no responsibility is taken for any error, omission or mis-statement. Icons of items such as bathroom suites are representations only and may not look like the real items. Made with Made Snappy 360.

Energy Efficiency Rating		
	Current	Potential
Very energy efficient - lower running costs		
(92 plus) A		
(81-91) B		
(69-80) C		
(55-68) D		
(39-54) E	53	53
(21-38) F		
(1-20) G		
Not energy efficient - higher running costs		
England & Wales	EU Directive 2002/91/EC	

Disclaimer – In accordance with the Property Misdescriptions Act, the company gives notice that all descriptions, references to condition, necessary permissions for use and other details are given in good faith and believed to be correct, but any intending lessees do not rely on them as statements of fact, but must satisfy themselves by inspection or other means, as to their accuracy.



abbotFox present this one bedroom ground floor apartment located in the popular and well-serviced coastal village of Bacton. Internal accommodation comprises; entrance hall, double bedroom with en suite bathroom, WC, generous lounge, large kitchen diner and utility. With external space benefiting from a front and rear patio garden, as well as shingle drive and off-street parking. The property is ideally suited to anyone downsizing, or searching for a holiday home or second home. An internal viewing comes highly recommended.

Bacton is a small village on the coast with a sandy beach and is situated in an unspoilt area of open countryside about 18 miles to the north of Norwich. As well as the beach Bacton offers a couple of local stores, a pub, cafes and takeaways.

