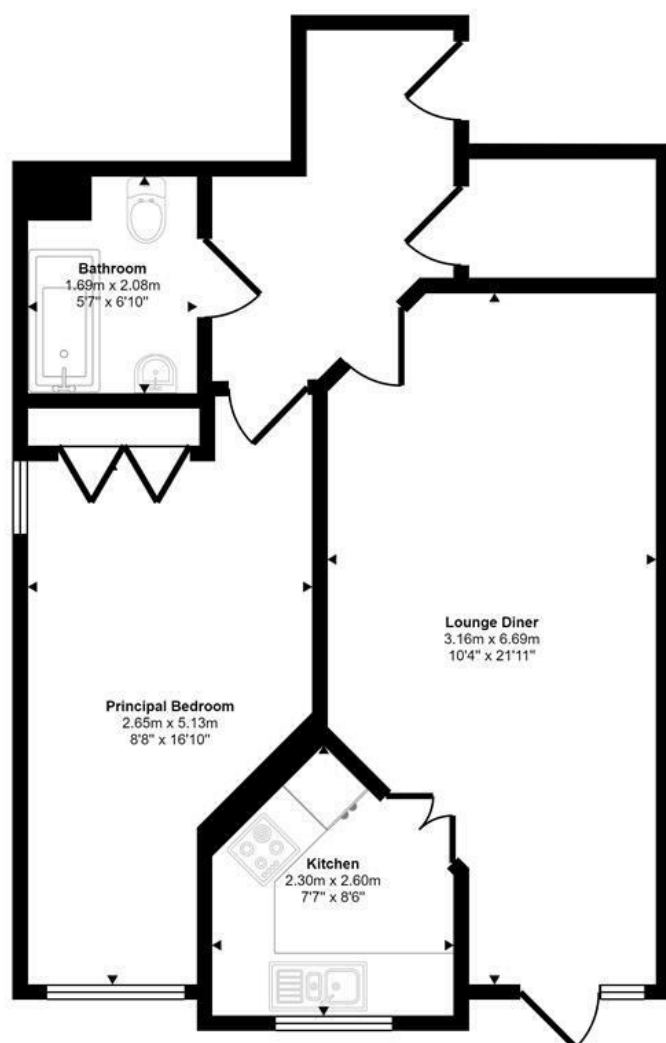




Ber Street | Norwich | NR1  
 Guide Price £150,000

Approx Gross Internal Area  
 51 sq m / 544 sq ft



Floorplan

This floorplan is only for illustrative purposes and is not to scale. Measurements of rooms, doors, windows, and any items are approximate and no responsibility is taken for any error, omission or mis-statement. Icons of items such as bathroom suites are representations only and may not look like the real items. Made with Made Snappy 360.

Energy Efficiency Rating		
	Current	Potential
Very energy efficient - lower running costs		
(92 plus) <b>A</b>		
(81-91) <b>B</b>		
(69-80) <b>C</b>		
(55-68) <b>D</b>		
(39-54) <b>E</b>		
(21-38) <b>F</b>		
(1-20) <b>G</b>		
Not energy efficient - higher running costs		
<b>England &amp; Wales</b>		EU Directive 2002/91/EC

Disclaimer – In accordance with the Property Misdescriptions Act, the company gives notice that all descriptions, references to condition, necessary permissions for use and other details are given in good faith and believed to be correct, but any intending lessees do not rely on them as statements of fact, but must satisfy themselves by inspection or other means, as to their accuracy.



abbotFox presents this chain free, ground floor retirement apartment. Set within easy reach of Norwich City Centre, this development affords a high degree of convenience and excellent on-site amenities. Situated towards the rear of the building and allowing direct access to a garden area, this spacious one bedroom apartment has been well maintained and comprises; inviting entrance hall, lounge diner, kitchen, generous double bedroom and bathroom. An internal viewing comes highly recommended.

Guide price £150,000 - £160,000

