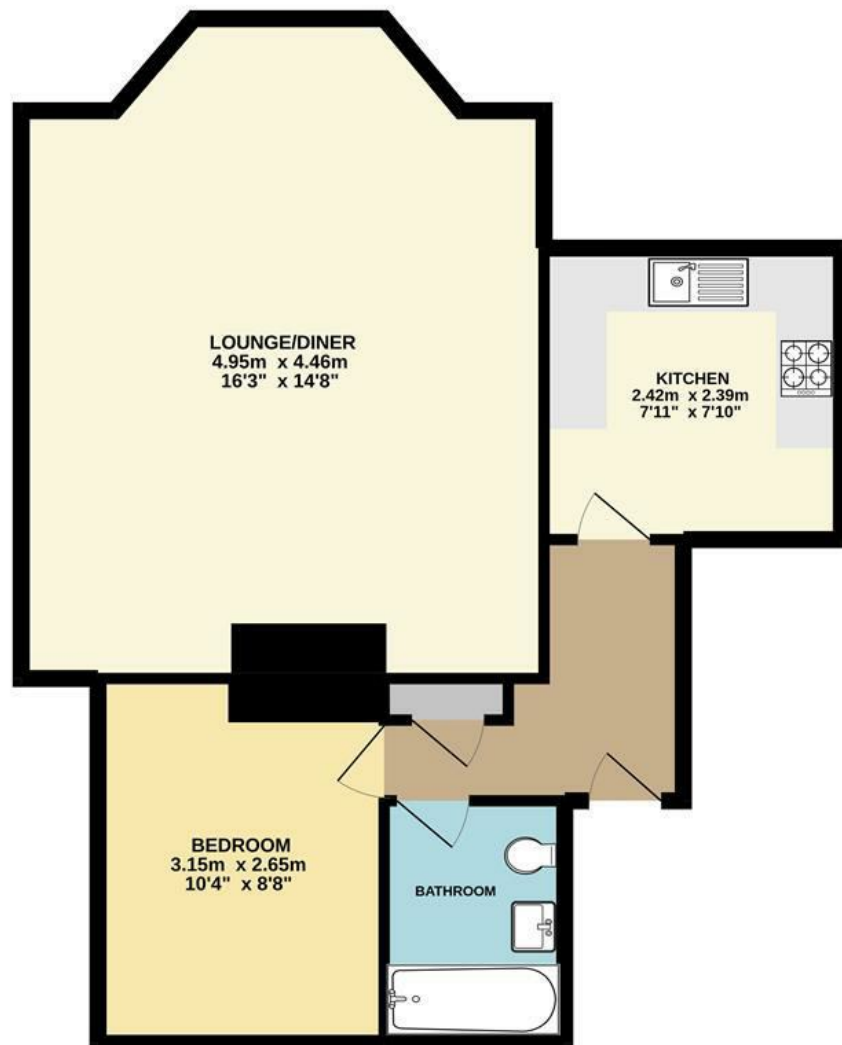




High Street | Norwich | NR11  
 £170,000

abbotFox

GROUND FLOOR



Energy Efficiency Rating		
	Current	Potential
<i>Very energy efficient - lower running costs</i>		
(92 plus) <b>A</b>		78
(81-91) <b>B</b>		
(69-80) <b>C</b>		
(55-68) <b>D</b>	66	
(39-54) <b>E</b>		
(21-38) <b>F</b>		
(1-20) <b>G</b>		
<i>Not energy efficient - higher running costs</i>		
<b>England &amp; Wales</b>		EU Directive 2002/91/EC

Disclaimer – In accordance with the Property Misdescriptions Act, the company gives notice that all descriptions, references to condition, necessary permissions for use and other details are given in good faith and believed to be correct, but any intending lessees do not rely on them as statements of fact, but must satisfy themselves by inspection or other means, as to their accuracy.

Whilst every attempt has been made to ensure the accuracy of the floorplan contained here, measurements of doors, windows, rooms and any other items are approximate and no responsibility is taken for any error, omission or mis-statement. This plan is for illustrative purposes only and should be used as such by any prospective purchaser. The services, systems and appliances shown have not been tested and no guarantee as to their operability or efficiency can be given.  
 Made with Metropix ©2022



abbotFox presents this chain free, first floor apartment. Situated within the popular Northfield House development, this home has been exceptionally well maintained and improved by the current owners to offer a bright and stylish finish throughout. With the property offering sea views and overlooking the village bowling green, this is an ideal coastal escape, with the village centre and award winning beach within a few moments walk. Accommodation comprises, entrance hall, spacious lounge diner, separate kitchen, double bedroom and bathroom, with the additional benefit of allocated parking and secure storage shed. An internal viewing comes highly recommended.

Mundesley is a popular Norfolk Coastal village and seaside resort surrounded by rich farming land with plentiful beaches stretching for miles. The village has a good selection of amenities including a Post Office, pharmacy, primary school and golf course. Further recreational and leisure facilities are available in the market town of North Walsham and the coastal town of Cromer.

