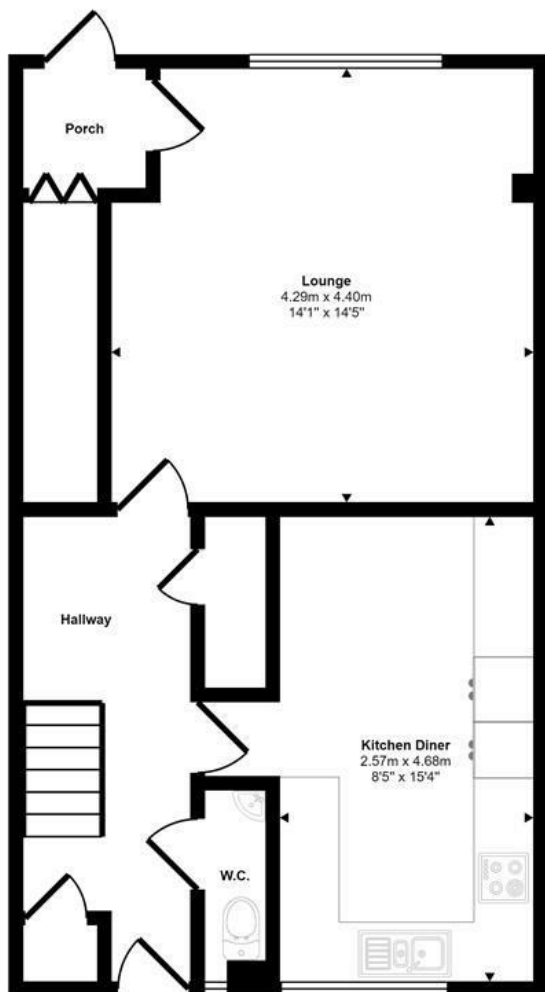




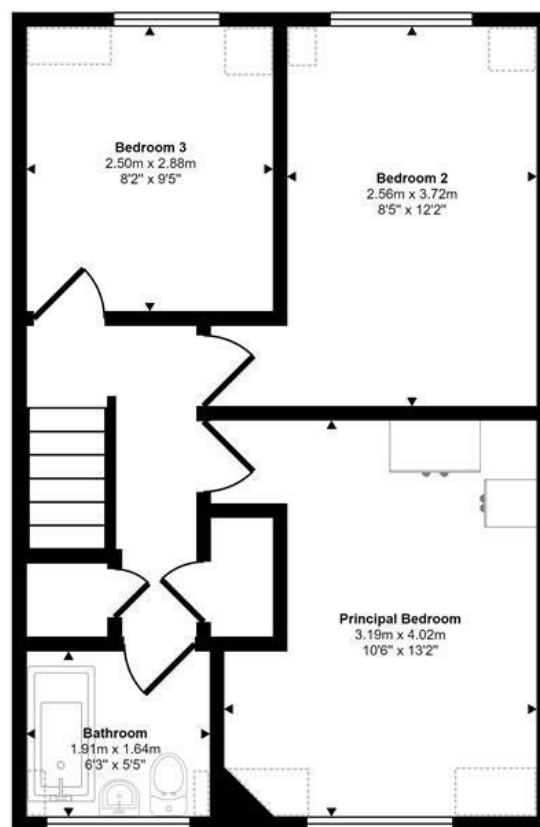
Brennewater Mews | Norwich | NR5
 Guide Price £220,000

abbotFox

Approx Gross Internal Area
 89 sq m / 958 sq ft



Ground Floor
 Approx 48 sq m / 512 sq ft



First Floor
 Approx 41 sq m / 446 sq ft

Denotes head height below 1.5m

This floorplan is only for illustrative purposes and is not to scale. Measurements of rooms, doors, windows, and any items are approximate and no responsibility is taken for any error, omission or mis-statement. Icons of items such as bathroom suites are representations only and may not look like the real items. Made with Made Snappy 360.

Energy Efficiency Rating		
	Current	Potential
Very energy efficient - lower running costs		
(92 plus) A		
(81-91) B		
(69-80) C		
(55-68) D		
(39-54) E		
(21-38) F		
(1-20) G		
Not energy efficient - higher running costs		
	72	80
England & Wales	EU Directive 2002/91/EC	

Disclaimer – In accordance with the Property Misdescriptions Act, the company gives notice that all descriptions, references to condition, necessary permissions for use and other details are given in good faith and believed to be correct, but any intending lessees do not rely on them as statements of fact, but must satisfy themselves by inspection or other means, as to their accuracy.



abbotFox presents this spacious family home. The accommodation comprises; entrance hall, cloakroom, lounge diner and kitchen diner to the ground floor, with three comfortable bedrooms and a family bathroom accessed off landing to the first floor. Externally, the property provides off road parking to the rear and an enclosed, private rear garden. Set within easy reach of a wealth of local amenities, this home affords a high degree of convenience, with an internal viewing highly recommended.

Guide price - £220,000 - £230,000

