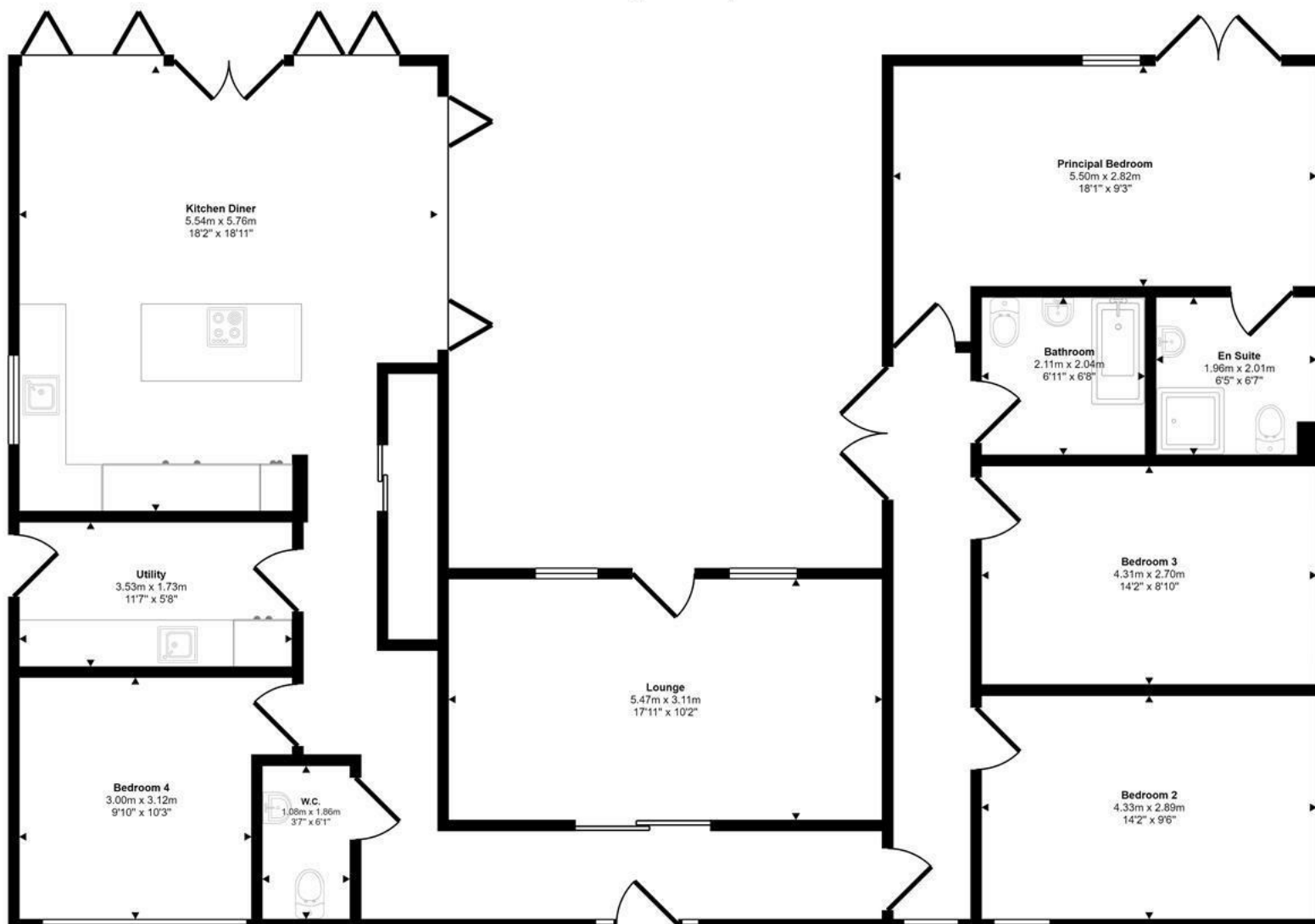




Mallard Mews, Hingham Road | Great Ellingham | NR17
PCM £2,750 PCM

abbotFox

Approx Gross Internal Area
145 sq m / 1559 sq ft



Floorplan

Energy Efficiency Rating		
	Current	Potential
Very energy efficient - lower running costs		
(92 plus) A		
(81-91) B		
(69-80) C		
(55-68) D		
(39-54) E		
(21-38) F		
(1-20) G		
Not energy efficient - higher running costs		
England & Wales	EU Directive 2002/91/EC	

Disclaimer – In accordance with the Property Misdescriptions Act, the company gives notice that all descriptions, references to condition, necessary permissions for use and other details are given in good faith and believed to be correct, but any intending lessees do not rely on them as statements of fact, but must satisfy themselves by inspection or other means, as to their accuracy.

This floorplan is only for illustrative purposes and is not to scale. Measurements of rooms, doors, windows, and any items are approximate and no responsibility is taken for any error, omission or mis-statement. Icons of items such as bathroom suites are representations only and may not look like the real items. Made with Made Snappy 360.



abbotFox presents this stunning, four bedroom detached new build home in a beautiful countryside setting.

Accommodation briefly comprises; an entrance hall, an impressive fully vaulted kitchen living room, a central lounge, four generous bedrooms, the principal bedroom with an en suite, family bathroom, WC and utility room.

There is a good sized rear garden, with a sun terrace and a detached double garage.

