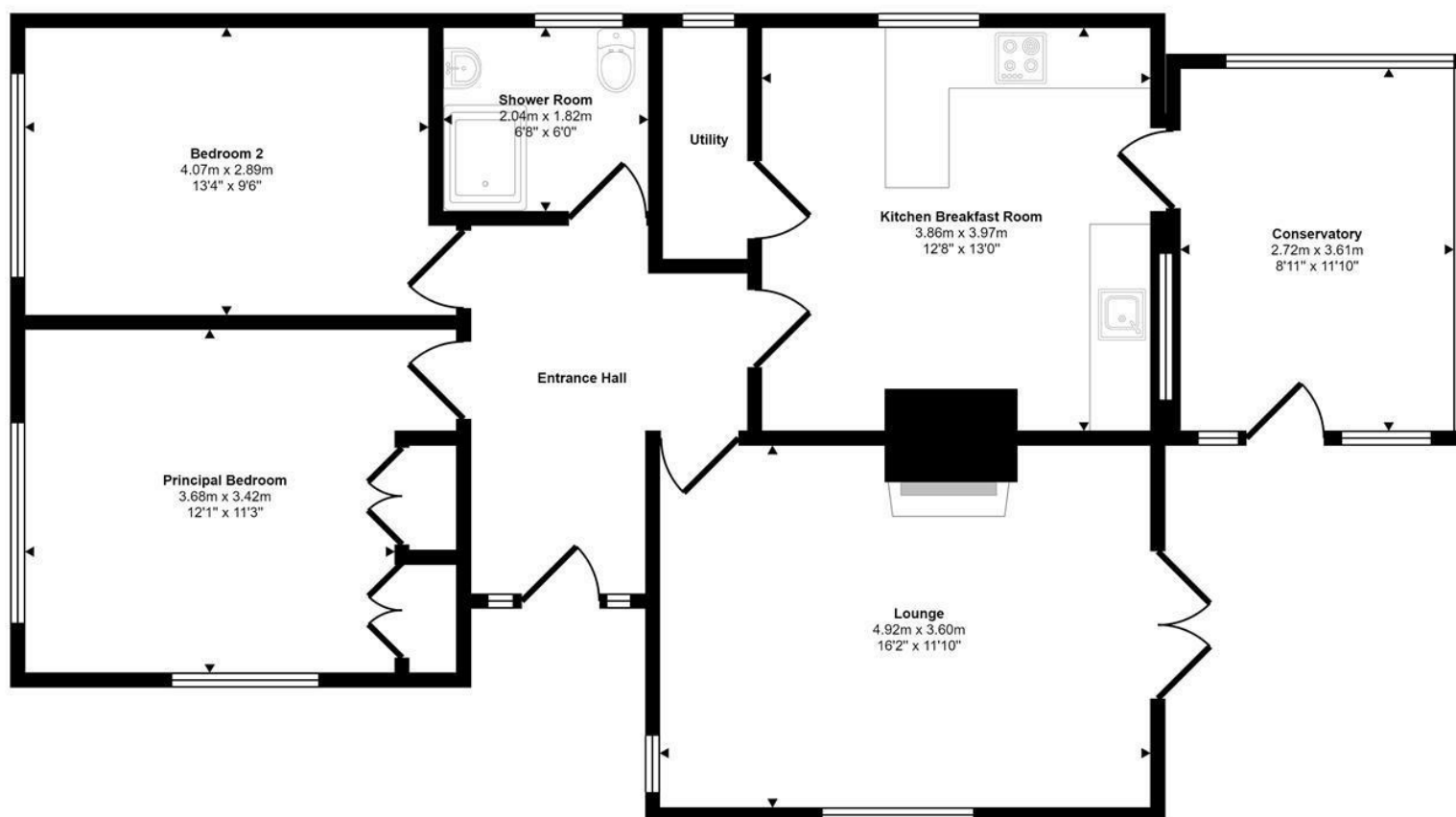




Marshall Close | Norwich | NR5
 Asking Price £300,000

abbotFox

Approx Gross Internal Area
 88 sq m / 947 sq ft



Floorplan

This floorplan is only for illustrative purposes and is not to scale. Measurements of rooms, doors, windows, and any items are approximate and no responsibility is taken for any error, omission or mis-statement. Icons of items such as bathroom suites are representations only and may not look like the real items. Made with Made Snappy 360.

Energy Efficiency Rating		
	Current	Potential
Very energy efficient - lower running costs		
(92 plus) A		
(81-91) B		
(69-80) C		84
(55-68) D	69	
(39-54) E		
(21-38) F		
(1-20) G		
Not energy efficient - higher running costs		
England & Wales	EU Directive 2002/91/EC	

Disclaimer – In accordance with the Property Misdescriptions Act, the company gives notice that all descriptions, references to condition, necessary permissions for use and other details are given in good faith and believed to be correct, but any intending lessees do not rely on them as statements of fact, but must satisfy themselves by inspection or other means, as to their accuracy.



abbotFox presents this spacious, detached bungalow. Occupying a corner plot within the sought after area of Costessey, this home affords a high degree of convenience, with a wealth of local amenities within walking distance.

The property itself provides bright and spacious rooms throughout, with neatly arranged accommodation comprising; an inviting entrance hall, lounge, kitchen diner room with utility cupboard, conservatory, two double bedrooms and a shower room. Externally, this home offers a secluded, secure courtyard, generous lawned garden with summer house and off road parking for several vehicles.

An ideal opportunity for any buyer looking to enjoy life on one level, an internal viewing comes highly recommended.

