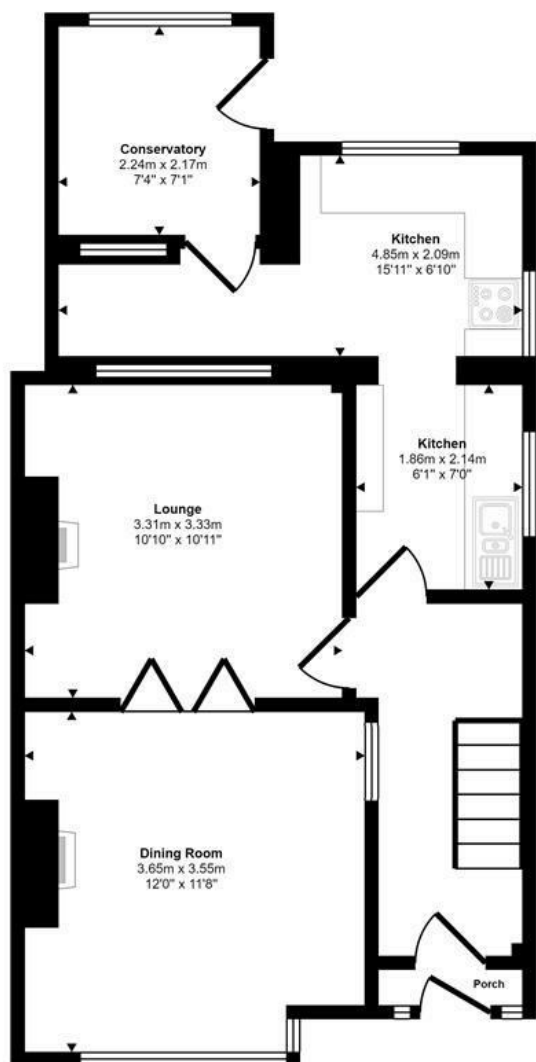




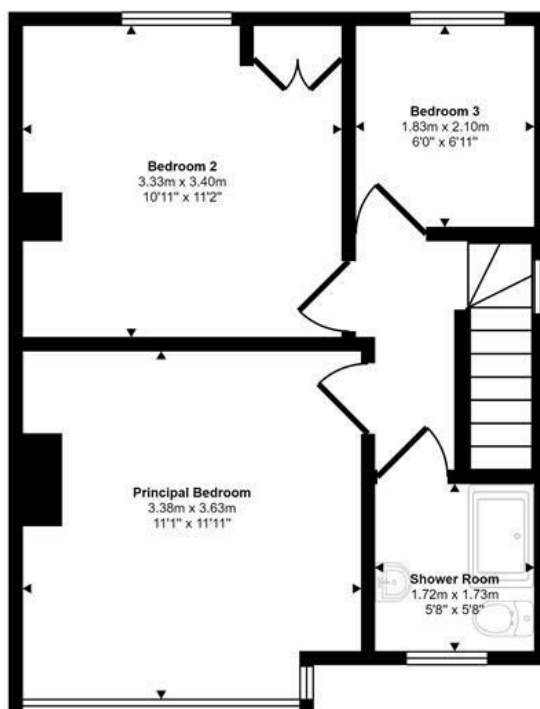
Heather Avenue | Norwich | NR6
 Guide Price £280,000

abbotFox

Approx Gross Internal Area
 87 sq m / 938 sq ft



Ground Floor
 Approx 51 sq m / 548 sq ft



First Floor
 Approx 36 sq m / 390 sq ft

This floorplan is only for illustrative purposes and is not to scale. Measurements of rooms, doors, windows, and any items are approximate and no responsibility is taken for any error, omission or mis-statement. Icons of items such as bathroom suites are representations only and may not look like the real items. Made with Made Snappy 360.

Energy Efficiency Rating		Current	Potential
Very energy efficient - lower running costs			
(92 plus) A			82
(81-91) B			
(69-80) C			
(55-68) D			
(39-54) E		47	
(21-38) F			
(1-20) G			
Not energy efficient - higher running costs			
England & Wales		EU Directive 2002/91/EC	

Disclaimer – In accordance with the Property Misdescriptions Act, the company gives notice that all descriptions, references to condition, necessary permissions for use and other details are given in good faith and believed to be correct, but any intending lessees do not rely on them as statements of fact, but must satisfy themselves by inspection or other means, as to their accuracy.



abbotFox presents this three bedroom semi-detached house. Set within the popular residential area of Hellesdon, this home represents an ideal opportunity for any young family, with a wealth of local amenities including well regarded schools within easy reach.

The property boasts two double bedrooms and a single bedroom, family bathroom to the first floor, with the ground floor comprising; entrance hall, kitchen, dining room and lounge and conservatory. Externally the property offers ample off road parking, garage and a private enclosed rear garden.

Situated in Hellesdon the area offers a variety of amenities including all levels of schools, shops and medical centre. There are regular bus services to Norwich City Centre. There is also easy access to the A47 and A11 providing good transport links to Cambridge and London.

Guide price £280,000 - £290,000

