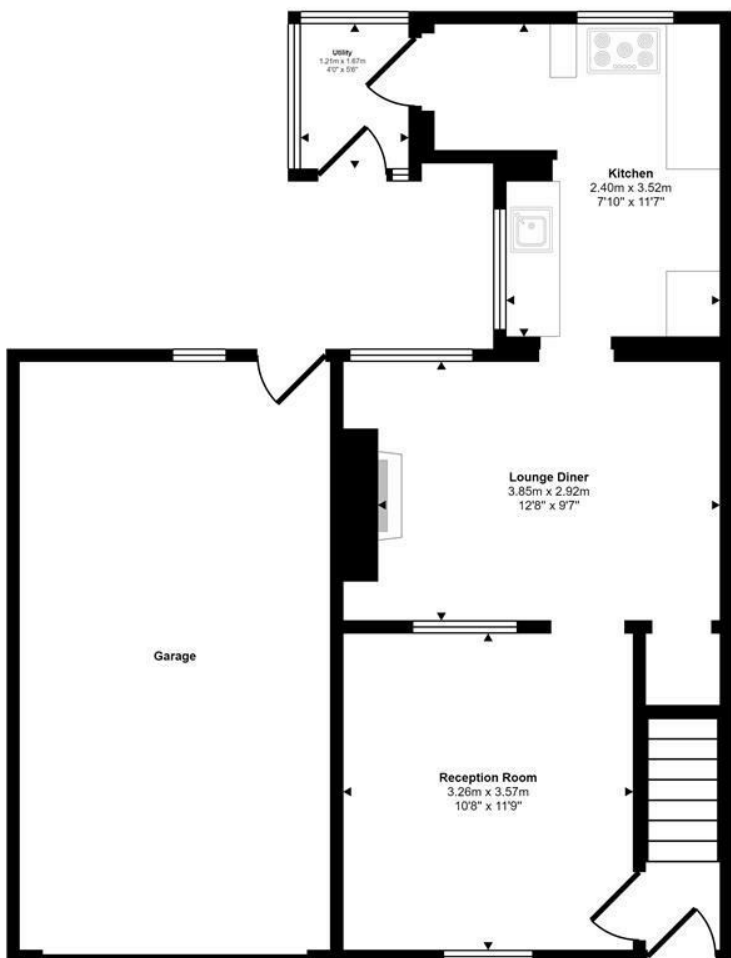




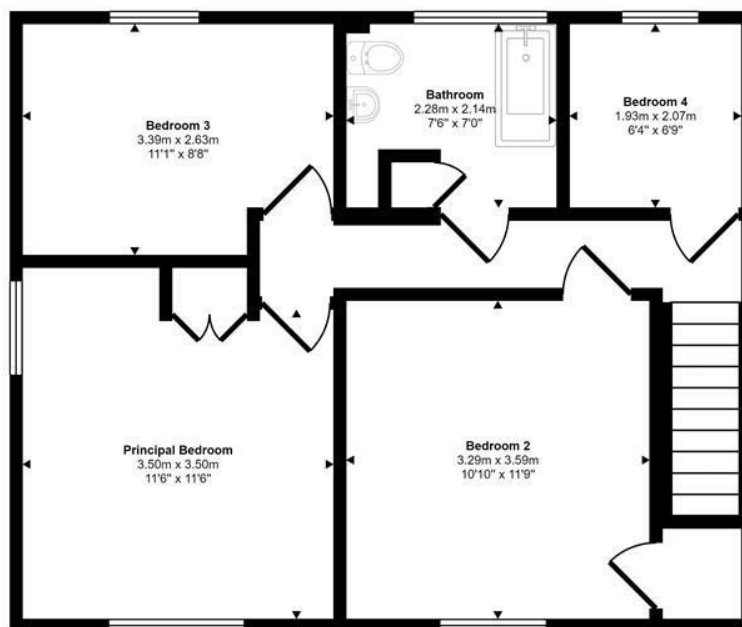
Northfield Road | North Walsham | NR28
 Guide Price £230,000

abbotFox

Approx Gross Internal Area
 118 sq m / 1269 sq ft



Ground Floor
 Approx 64 sq m / 693 sq ft



First Floor
 Approx 53 sq m / 575 sq ft

This floorplan is only for illustrative purposes and is not to scale. Measurements of rooms, doors, windows, and any items are approximate and no responsibility is taken for any error, omission or mis-statement. Icons of items such as bathroom suites are representations only and may not look like the real items. Made with Made Snappy 360.

Energy Efficiency Rating		Current	Potential
Very energy efficient - lower running costs			
(92 plus) A			84
(81-91) B			
(69-80) C			
(55-68) D		63	
(39-54) E			
(21-38) F			
(1-20) G			
Not energy efficient - higher running costs			
England & Wales		EU Directive 2002/91/EC	

Disclaimer – In accordance with the Property Misdescriptions Act, the company gives notice that all descriptions, references to condition, necessary permissions for use and other details are given in good faith and believed to be correct, but any intending lessees do not rely on them as statements of fact, but must satisfy themselves by inspection or other means, as to their accuracy.



abbotFox presents this deceptively spacious end terraced cottage. Set on the edges of the popular and well serviced market town of North Walsham, this home offers a space that must be seen to be believed.

The accommodation is neatly arranged over two floors, with the ground floor comprising; entrance hall, lounge, dining room, kitchen and rear lobby. The first floor provides four bedrooms and family bathroom off landing. Externally, the property allows for off road parking for two vehicles, and access to the integral garage, which is complete with an inspection pit. The rear garden offers ample space for extension (STPP) and a high degree of privacy.

An ideal home for any buyer looking for space, an internal viewing comes highly recommended to appreciate the potential this home holds.

Guide Price £230,000 - £240,000

