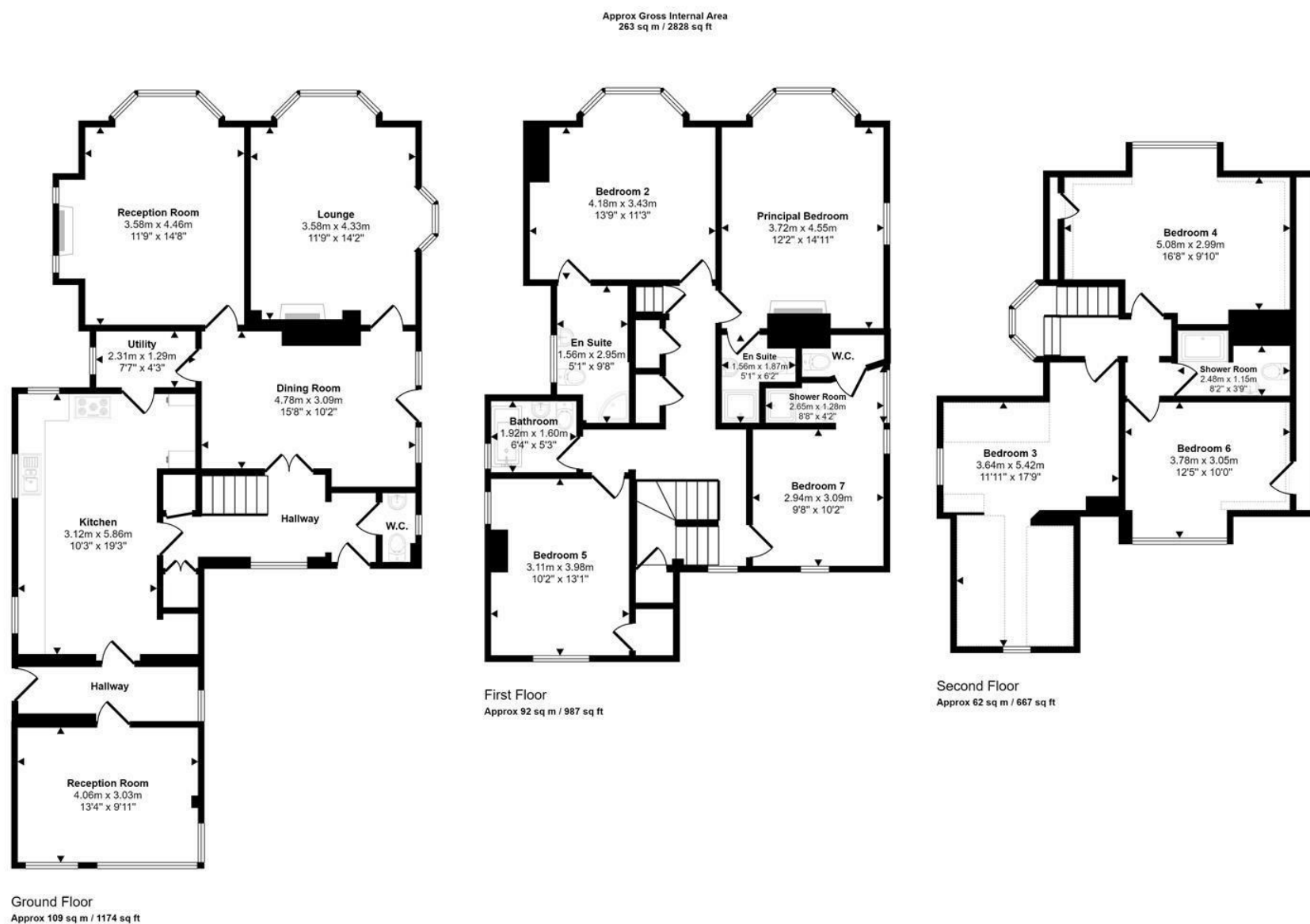




High Street | Mundesley | NR11
PCM £3,750 PCM

abbotFox



Energy Efficiency Rating		
	Current	Potential
Very energy efficient - lower running costs		
(92 plus) A		
(81-91) B		
(69-80) C		
(55-68) D		
(39-54) E		
(21-38) F		
(1-20) G		
Not energy efficient - higher running costs		
England & Wales		EU Directive 2002/91/EC

Disclaimer – In accordance with the Property Misdescriptions Act, the company gives notice that all descriptions, references to condition, necessary permissions for use and other details are given in good faith and believed to be correct, but any intending lessees do not rely on them as statements of fact, but must satisfy themselves by inspection or other means, as to their accuracy.



abbotFox are pleased to present Hilltop. A stunning seven-bedroom, three storey Edwardian family home, boasting sea views and a generous garden including a hot tub. Rarely do coastal properties of this stature come to the rental market. Hilltop has been operated as a very successful holiday let and therefore can now be offered furnished or unfurnished.

This beautiful home has a warm ambience throughout, with many original features including open fireplaces and bays to principal rooms. These features are complemented by more recent additions of solar panels, double glazing, ensuite bathrooms, pumped showers, and gas central heating all of which make the house easy to manage and live in with plenty of space for entertaining.

The spacious accommodation begins from the striking hallway from which the three reception rooms flow. Currently used as a dining room and two sitting rooms. The kitchen, fitted with bespoke fitted units and a range cooker with space for an American Fridge Freezer and other white goods– appliances would be available via separate negotiation. A boot room and fourth reception room currently used a playroom lead from the kitchen along with the 'Butler's Pantry' which provides storage space.

The wide staircase leads up to four large double bedrooms on the first floor – two of which have sea views with three having ensembles and the fourth is adjacent to the well-presented family bathroom. The third floor offers a further two double bedrooms – another sea view- and a quirky restricted height bedroom. A shower room with large shower cubicle can also be found on this floor.

