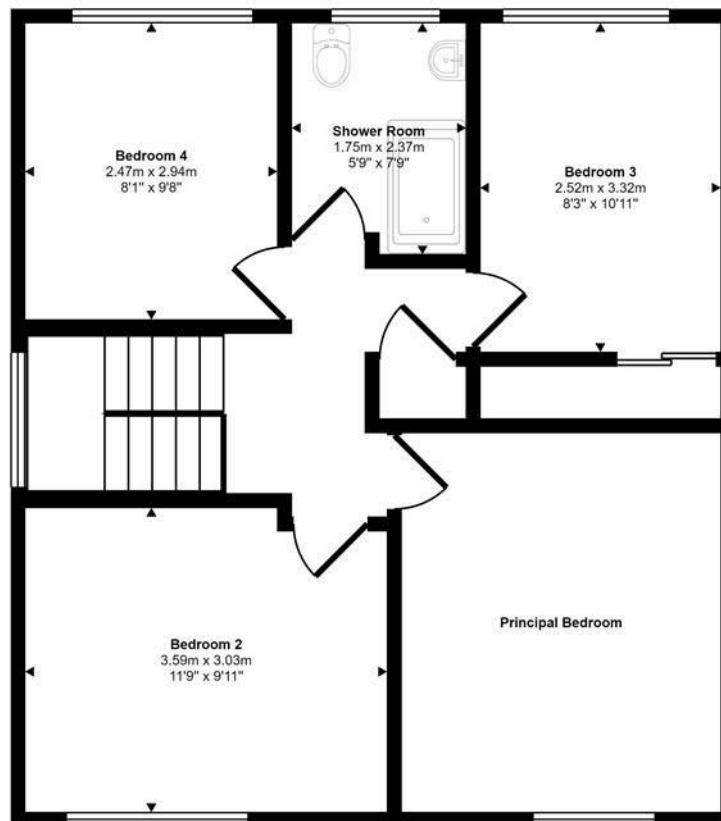
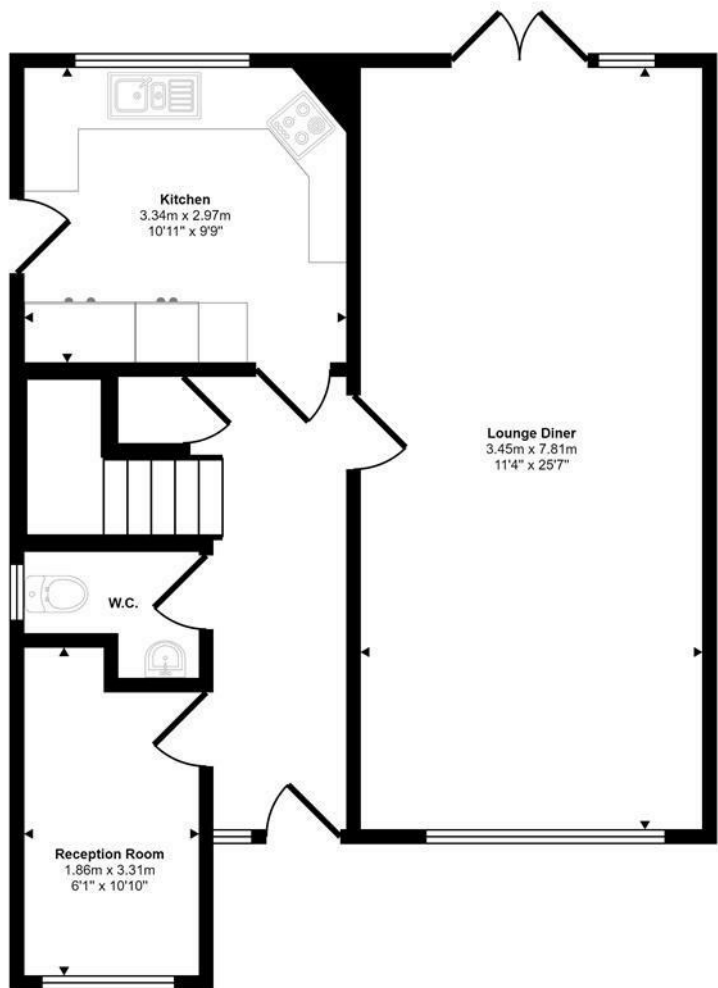




Primula Drive | Norwich | NR4
 £500,000

abbotFox

Approx Gross Internal Area
 111 sq m / 1199 sq ft



Energy Efficiency Rating		
	Current	Potential
Very energy efficient - lower running costs		
(92 plus) A		
(81-91) B		
(69-80) C		
(55-68) D		
(39-54) E		
(21-38) F		
(1-20) G		
Not energy efficient - higher running costs		
England & Wales	EU Directive 2002/91/EC	

Disclaimer – In accordance with the Property Misdescriptions Act, the company gives notice that all descriptions, references to condition, necessary permissions for use and other details are given in good faith and believed to be correct, but any intending lessees do not rely on them as statements of fact, but must satisfy themselves by inspection or other means, as to their accuracy.

This floorplan is only for illustrative purposes and is not to scale. Measurements of rooms, doors, windows, and any items are approximate and no responsibility is taken for any error, omission or mis-statement. Icons of items such as bathroom suites are representations only and may not look like the real items. Made with Made Snappy 360.



abbotFox presents this generous detached family home. Set within a popular residential area and offering easy access to the University of Easy Anglia, local schools, shops parks and with excellent transport links nearby, this home would be an ideal opportunity for any growing family or buy-to-let investor.

Sitting on a generous plot, with ample off road parking to the front, a garage and carport, and an enclosed private rear garden, this property offers a sense of light and space throughout. The internal accommodation is neatly arranged over two floors, with the ground floor offering an inviting entrance hall, cloakroom, lounge diner, re-fitted kitchen and additional reception room, which could be used as a further bedroom. The first floor offers four comfortable bedrooms and a modern re-fitted shower room. An internal viewing comes highly recommended to appreciate this property.

