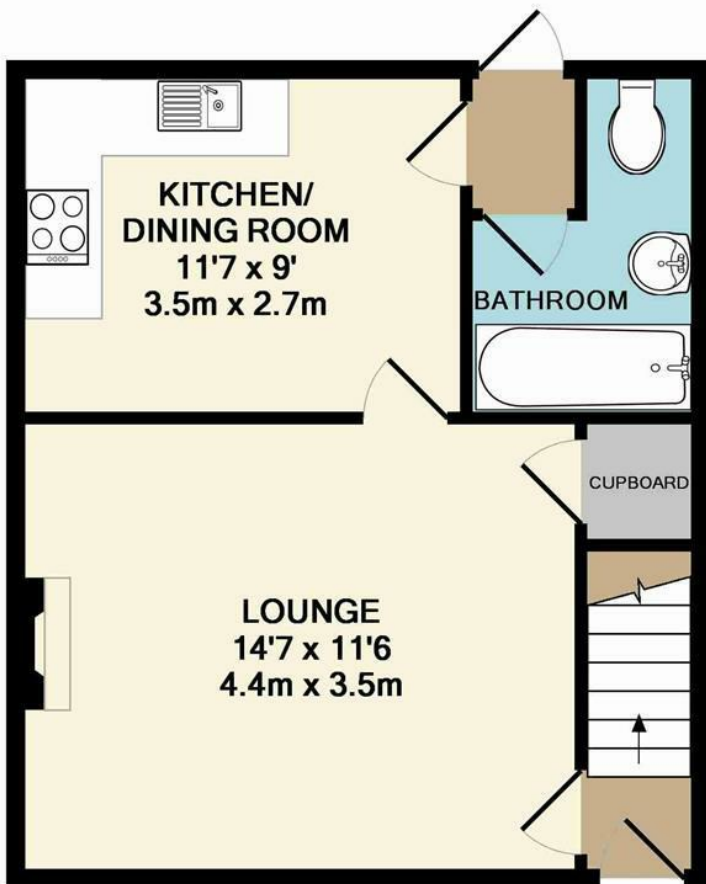


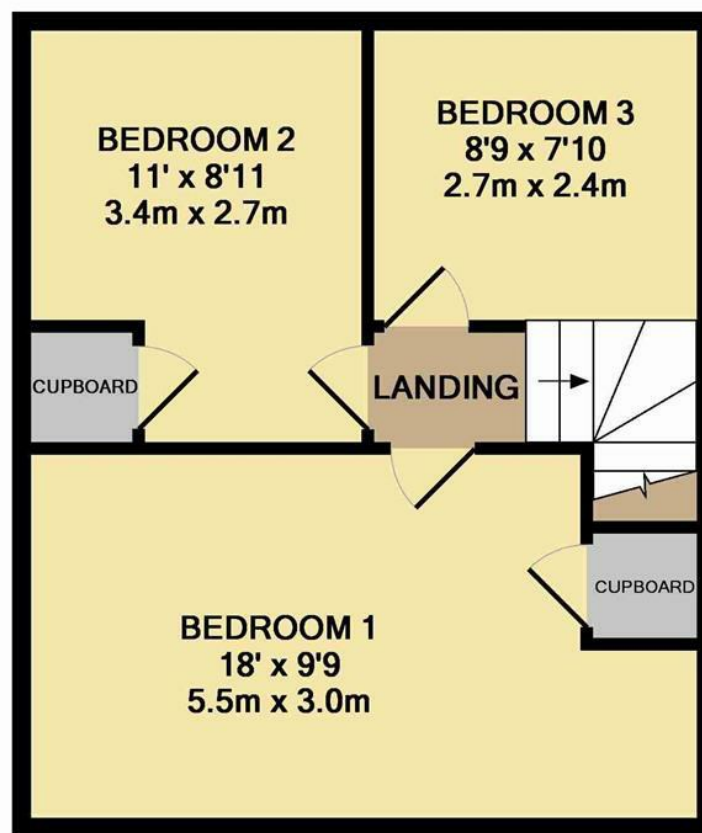


Barrett Road | Norwich | NR1
PCM £1,000 PCM

abbotFox



GROUND FLOOR



1ST FLOOR

Whilst every attempt has been made to ensure the accuracy of the floor plan contained here, measurements of doors, windows, rooms and any other items are approximate and no responsibility is taken for any error, omission, or mis-statement. This plan is for illustrative purposes only and should be used as such by any prospective purchaser. The services, systems and appliances shown have not been tested and no guarantee as to their operability or efficiency can be given
Made with Metropix ©2015

Energy Efficiency Rating		
	Current	Potential
Very energy efficient - lower running costs		
(92 plus) A		
(81-91) B		
(69-80) C		
(55-68) D		
(39-54) E		
(21-38) F		
(1-20) G		
Not energy efficient - higher running costs		
England & Wales		EU Directive 2002/91/EC

Disclaimer – In accordance with the Property Misdescriptions Act, the company gives notice that all descriptions, references to condition, necessary permissions for use and other details are given in good faith and believed to be correct, but any intending lessees do not rely on them as statements of fact, but must satisfy themselves by inspection or other means, as to their accuracy.



Providing easy access to the Ring Road, this extremely well presented three bedroom mid terrace house offers comfortable living accommodation throughout. Comprising of a bright lounge, fitted kitchen breakfast room, sleek ground floor bathroom and plenty of storage space. This home also boasts an enclosed rear garden and ample off road parking.

Situated south of Norwich City Centre in a popular area providing easy access to the A140 Ipswich Road, A11 and A47 Southern Bypass. The area is served by a range of local amenities including shops and all levels of schooling.

