



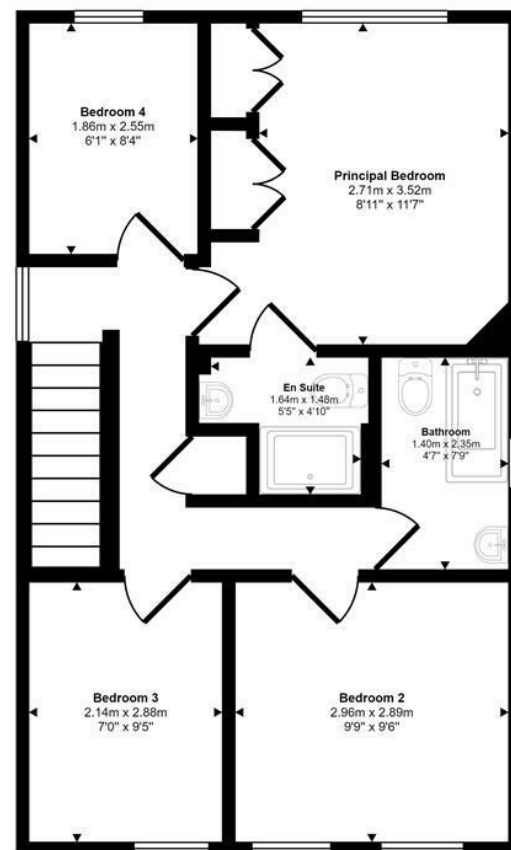
Tuttles Lane West | Wymondham | NR18
 Guide Price £435,000

abbotFox

Approx Gross Internal Area
 128 sq m / 1382 sq ft



Ground Floor
 Approx 81 sq m / 868 sq ft



First Floor
 Approx 48 sq m / 514 sq ft

This floorplan is only for illustrative purposes and is not to scale. Measurements of rooms, doors, windows, and any items are approximate and no responsibility is taken for any error, omission or mis-statement. Icons of items such as bathroom suites are representations only and may not look like the real items. Made with Made Snappy 360.

Energy Efficiency Rating		
	Current	Potential
Very energy efficient - lower running costs		
(92 plus) A		
(81-91) B		
(69-80) C		
(55-68) D		
(39-54) E		
(21-38) F		
(1-20) G		
Not energy efficient - higher running costs		
England & Wales	EU Directive 2002/91/EC	

Disclaimer – In accordance with the Property Misdescriptions Act, the company gives notice that all descriptions, references to condition, necessary permissions for use and other details are given in good faith and believed to be correct, but any intending lessees do not rely on them as statements of fact, but must satisfy themselves by inspection or other means, as to their accuracy.



abbotFox presents this spacious, detached family home. Overlooking nearby fields, and offering a South facing rear garden, this is the ideal opportunity for any growing family.

Occupying a generous plot, with an enclosed, private rear garden and ample off road parking to the front, this home affords neatly arranged accommodation over two floors. The ground floor comprises; entrance hall, cloakroom, lounge, dining room, kitchen and utility room, which leads onto the adjoining double garage. The first floor offers four comfortable bedrooms, with the principal bedroom benefitting from a re-fitted en suite shower room, and a re-fitted family bathroom accessed off landing.

With the property offering potential to extend (STPP) this home has the space to grow with any family. An internal viewing comes highly recommended to appreciate this home.

Guide price £435,000 - £450,000

