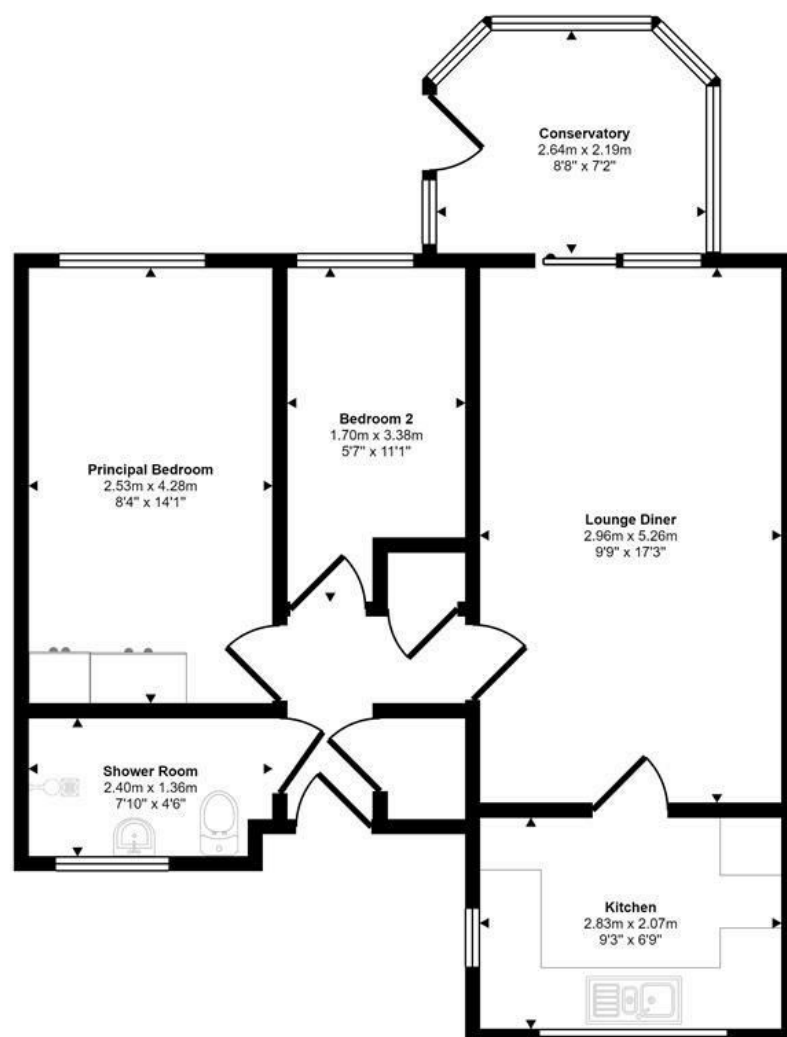




Churchfield Green | Norwich | NR7  
Offers In Excess Of £190,000

abbotFox

Approx Gross Internal Area  
53 sq m / 566 sq ft



Floorplan

This floorplan is only for illustrative purposes and is not to scale. Measurements of rooms, doors, windows, and any items are approximate and no responsibility is taken for any error, omission or mis-statement. Icons of items such as bathroom suites are representations only and may not look like the real items. Made with Made Snappy 360.

Energy Efficiency Rating		Current	Potential
Very energy efficient - lower running costs			
(92 plus) <b>A</b>			
(81-91) <b>B</b>			
(69-80) <b>C</b>			
(55-68) <b>D</b>			
(39-54) <b>E</b>			
(21-38) <b>F</b>			
(1-20) <b>G</b>			
Not energy efficient - higher running costs			
<b>England &amp; Wales</b>		EU Directive 2002/91/EC	

Disclaimer – In accordance with the Property Misdescriptions Act, the company gives notice that all descriptions, references to condition, necessary permissions for use and other details are given in good faith and believed to be correct, but any intending lessees do not rely on them as statements of fact, but must satisfy themselves by inspection or other means, as to their accuracy.



abbotFox presents this chain-free retirement bungalow within a sheltered housing development that has an on site Warden. Set within a quiet close, within the sought after residential area of Thorpe St Andrew, this home is ideally situated within easy reach of a wealth of local amenities, and provides easy transport links into Norwich City Centre.

There is a monthly service charge which covers buildings insurance, certain aspects of external maintenance, including the communal gardens. There are activities and a community room organised by the Warden.

The property itself comprises; entrance hall, spacious lounge diner, kitchen, conservatory, two bedrooms and a wet room. The property also offers an enclosed rear garden, which affords a high degree of privacy. An internal viewing comes highly recommended to appreciate this home.

