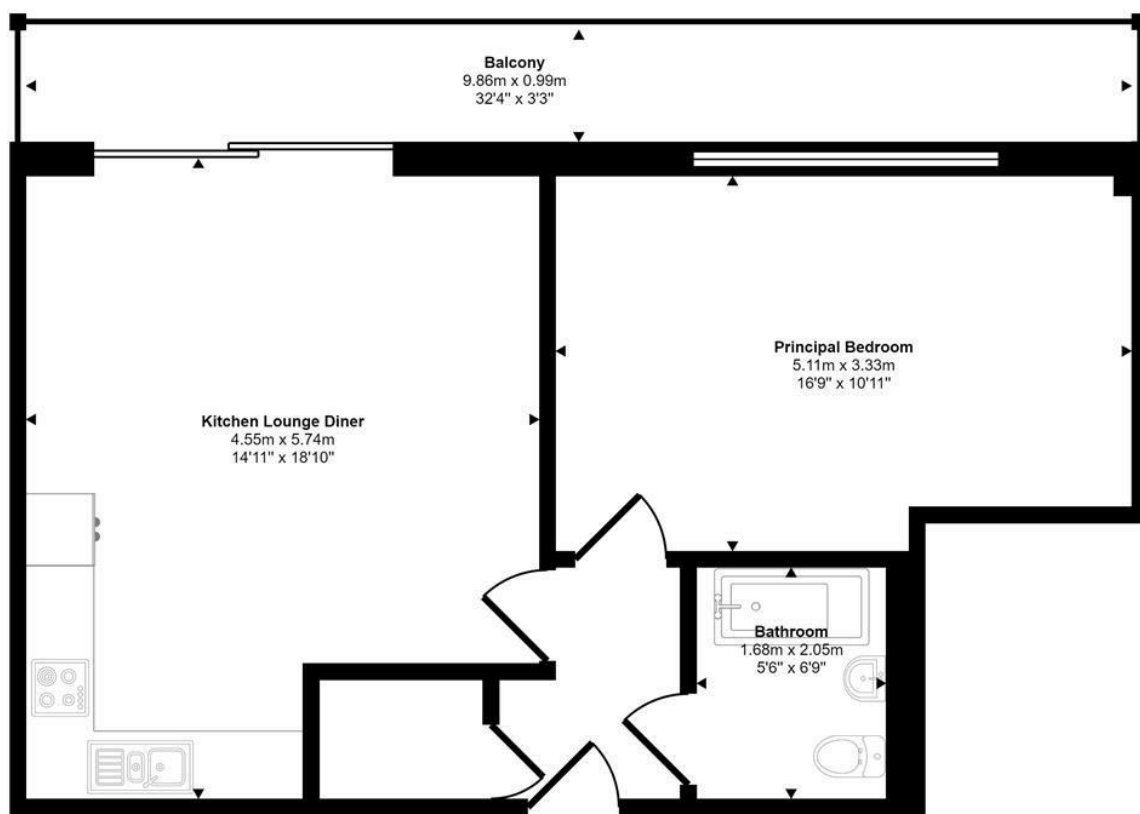




Ber Street | Norwich | NR1
 Guide Price £175,000

abbotFox

Approx Gross Internal Area
 50 sq m / 538 sq ft



Floorplan

This floorplan is only for illustrative purposes and is not to scale. Measurements of rooms, doors, windows, and any items are approximate and no responsibility is taken for any error, omission or mis-statement. Icons of items such as bathroom suites are representations only and may not look like the real items. Made with Made Snappy 360.

Energy Efficiency Rating		
	Current	Potential
Very energy efficient - lower running costs		
(92 plus) A		
(81-91) B		
(69-80) C		
(55-68) D	65	65
(39-54) E		
(21-38) F		
(1-20) G		
Not energy efficient - higher running costs		
England & Wales	EU Directive 2002/91/EC	

Disclaimer – In accordance with the Property Misdescriptions Act, the company gives notice that all descriptions, references to condition, necessary permissions for use and other details are given in good faith and believed to be correct, but any intending lessees do not rely on them as statements of fact, but must satisfy themselves by inspection or other means, as to their accuracy.



abbotFox presents this stylish, top floor apartment. Situated within the popular Skipper House development, which is ideally situated within Norwich City Centre, this home occupies a prominent position within the building, overlooking the nearby church.

The accommodation is neatly arranged and comprises; open plan living area leading to a generous balcony, spacious double bedroom and a stylish bathroom. An internal viewing comes highly recommended to appreciate this property.

GUIDE PRICE £175,000 - £185,000

