



abbotFox

North Walsham Road, Trunch NR28

Exceptional modern bungalow occupying a generous plot

North Walsham Road, Trunch NR28

Exceptional modern bungalow occupying a generous plot

abbotFox presents this exceptional modern bungalow, set within the sought after village of Trunch. Occupying a generous plot, which backs onto playing fields, this home has been meticulously designed and constructed to offer a bright and stylish finish throughout.

The internal accommodation comprises; entrance hall, stunning open plan living area, utility room,, three double bedrooms, two serviced with en-suite shower rooms, and a family bathroom. Externally, the rear gardens afford a high degree of privacy, with the property also benefitting from a generous driveway, which would allow for off road parking for numerous vehicles. An ideal opportunity for any buyer looking to enjoy life on one level, an internal viewing comes highly recommended.

KEY FEATURES

- Stylish modern bungalow
- Generous plot, backing onto playing fields
- Three double bedrooms
- Stunning open plan living accommodation
- Sought after village location
- Viewing advised

SITUATION

The picturesque north norfolk village of Trunch lies only two miles from the East coast, close to the coastal resort of Mundesley, 3 miles from North Walsham, and 17 miles from Norwich. The village centre features the medieval Church of St Bololph and old Norfolk flintstone houses within a designated conservation area. The area has many public footpaths and quiet lanes, ideal for walking, bird watching and is popular with conservationists. .

Bus services link the village with North Walsham and Cromer and further services to onward destinations such as Hunstanton, Fakenham, Norwich and Great Yarmouth. The nearest railway stations are Gunton or North Walsham with services to Wroxham and Norwich or Cromer and Sheringham.

SERVICES

Boiler and underfloor heating, mains gas, mains water

LOCAL AUTHORITY

North Norfolk District Council

COUNCIL TAX BAND

D

TENURE

Freehold

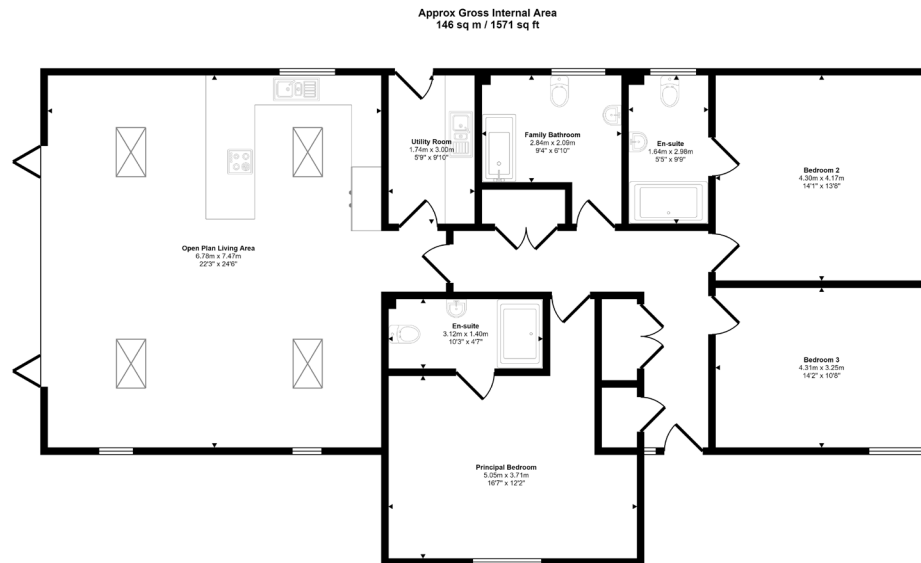




North Walsham Road, Trunch NR28

Exceptional modern bungalow occupying a generous plot

Energy Efficiency Rating		Environmental Impact Rating	
Current	Potential	Current	Potential
A	A	A	A
B	B	B	B
C	C	C	C
D	D	D	D
E	E	E	E
F	F	F	F
G	G	G	G
Get UK, Europe			



Floorplan

This floorplan is only for illustrative purposes and is not to scale. Measurements of rooms, doors, windows, and any items are approximate and no responsibility is taken for any error, omission or mis-statement. Icons of items such as bathroom suites are representations only and may not look like the real items. Made with Made Snappy 360.

Disclaimer - In accordance with the Property Misdescriptions Act, the company gives notice that all descriptions, references to condition, necessary permissions for use and other details are given in good faith and believed to be correct, but any intending purchasers do not rely on them as statements of fact, but must satisfy themselves by inspection or other means, as to their accuracy.



abbotFox Norwich Branch
01603 660000
sales@abbotfox.co.uk