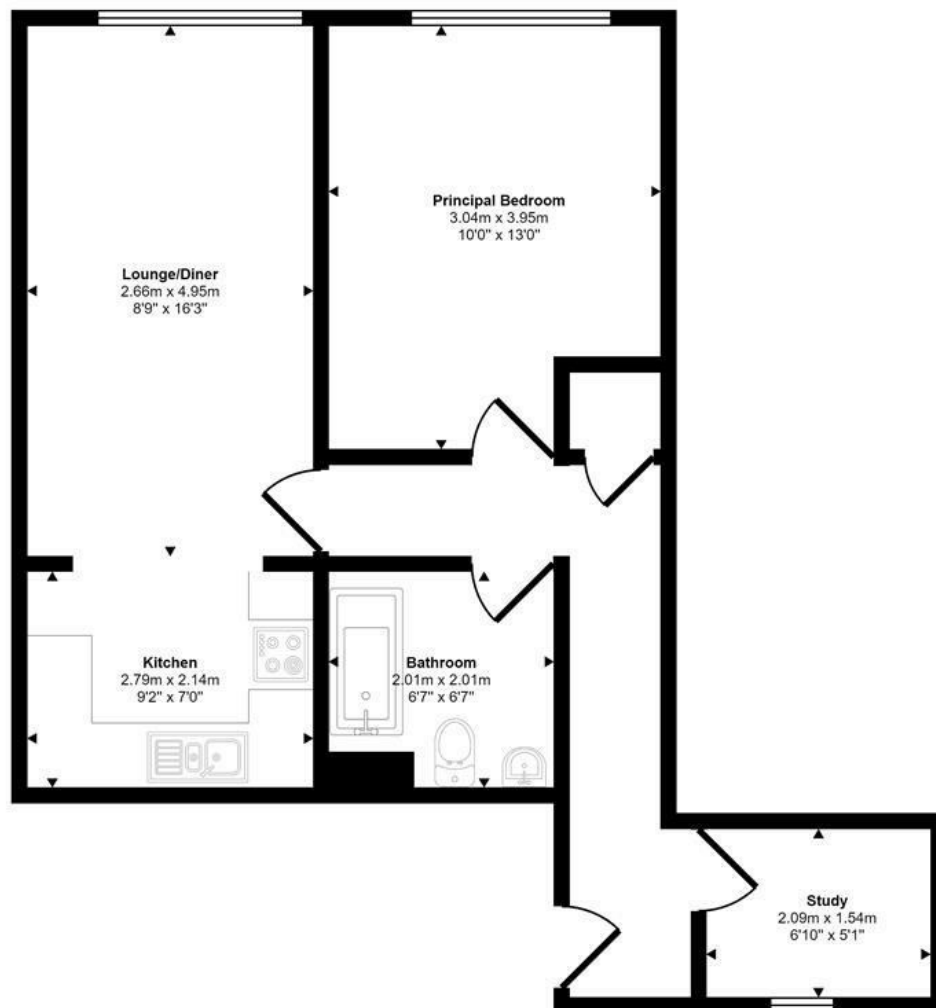




Gerard Hudson Gardens | Norwich | NR4  
 Asking Price £107,000

Approx Gross Internal Area  
 48 sq m / 513 sq ft



Floorplan

This floorplan is only for illustrative purposes and is not to scale. Measurements of rooms, doors, windows, and any items are approximate and no responsibility is taken for any error, omission or mis-statement. Icons of items such as bathroom suites are representations only and may not look like the real items. Made with Made Snappy 360.

Energy Efficiency Rating		
	Current	Potential
Very energy efficient - lower running costs		
(92 plus) <b>A</b>		
(81-91) <b>B</b>		
(69-80) <b>C</b>	69	80
(55-68) <b>D</b>		
(39-54) <b>E</b>		
(21-38) <b>F</b>		
(1-20) <b>G</b>		
Not energy efficient - higher running costs		
<b>England &amp; Wales</b>	EU Directive 2002/91/EC	

Disclaimer – In accordance with the Property Misdescriptions Act, the company gives notice that all descriptions, references to condition, necessary permissions for use and other details are given in good faith and believed to be correct, but any intending lessees do not rely on them as statements of fact, but must satisfy themselves by inspection or other means, as to their accuracy.

abbotFox presents this first floor, purpose built apartment. Set within the grounds of the prestigious Keswick Hall development, this home affords access to well maintained communal grounds, swimming pool and tennis courts.

The property itself offers neatly arranged accommodation comprising; entrance hall, open plan living kitchen area, two bedrooms and a bathroom. With views over the grounds, this home offers a sense of peace and seclusion. Currently let, this property makes an ideal investment opportunity, but can also be offered with vacant possession and would make an ideal bolt hole for any owner occupier. An internal viewing comes highly recommended.

