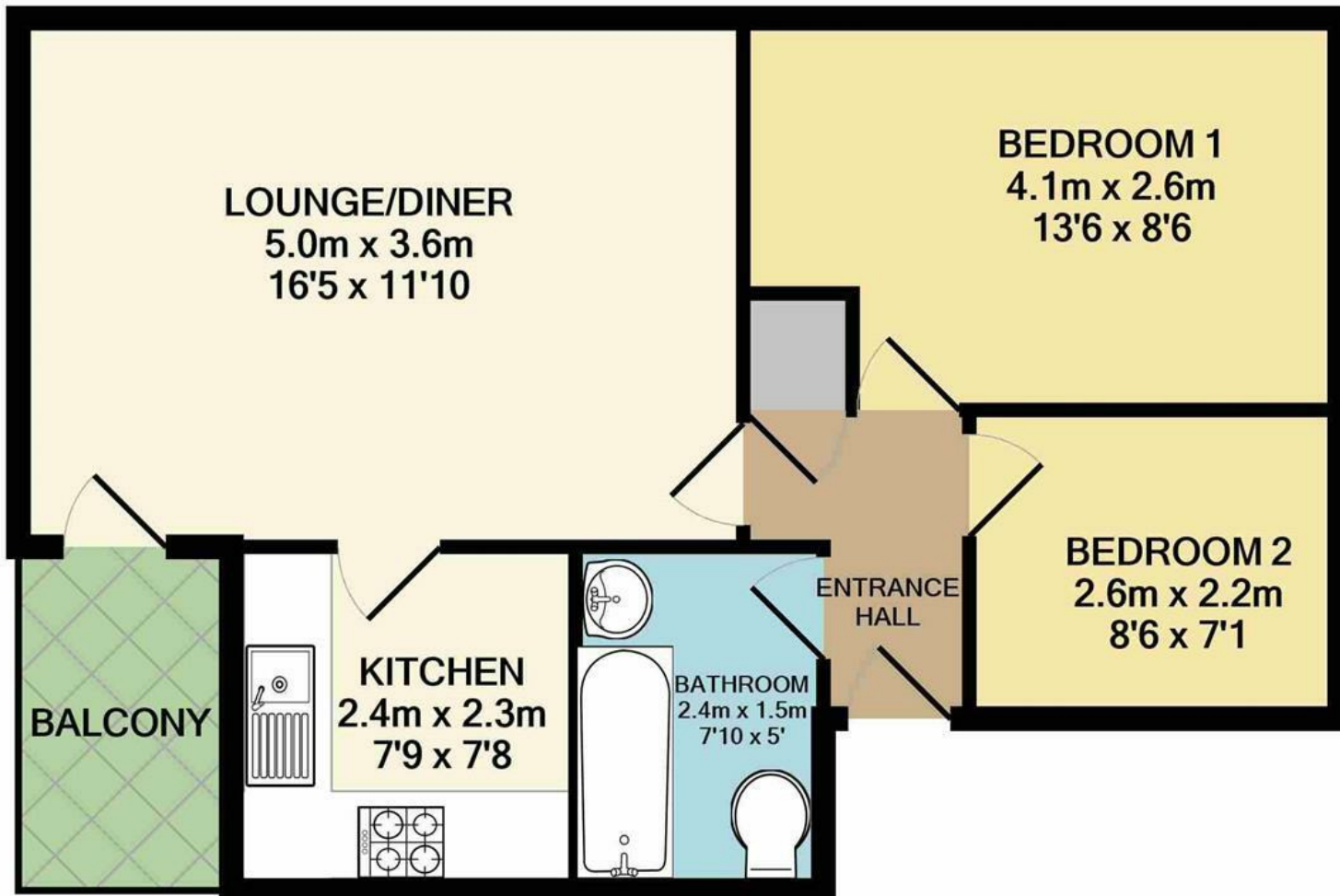




Scott Road | Norwich | NR1
PCM £875 PCM

abbotFox



TOTAL APPROX. FLOOR AREA 46.6 SQ.M. (502 SQ.FT.)

Whilst every attempt has been made to ensure the accuracy of the floor plan contained here, measurements of doors, windows, rooms and any other items are approximate and no responsibility is taken for any error, omission, or mis-statement. This plan is for illustrative purposes only and should be used as such by any prospective purchaser. The services, systems and appliances shown have not been tested and no guarantee as to their operability or efficiency can be given

Made with Metropix ©2021

Energy Efficiency Rating		
	Current	Potential
Very energy efficient - lower running costs		
(92 plus) A		
(81-91) B		
(69-80) C		
(55-68) D		
(39-54) E		
(21-38) F		
(1-20) G		
Not energy efficient - higher running costs		
England & Wales	EU Directive 2002/91/EC	

Disclaimer – In accordance with the Property Misdescriptions Act, the company gives notice that all descriptions, references to condition, necessary permissions for use and other details are given in good faith and believed to be correct, but any intending lessees do not rely on them as statements of fact, but must satisfy themselves by inspection or other means, as to their accuracy.



abbotFox presents this well presented two bedroom apartment, this property is ideally situated within the popular Thorpe Park development, which offers easy access to Norwich City Centre, the train station and a wealth of local amenities.

This first floor apartment comprises an inviting entrance hall, spacious lounge diner, kitchen, private balcony, two bedrooms and a bathroom. With an allocated parking space and access to well maintained communal grounds, an internal viewing comes highly recommended.

