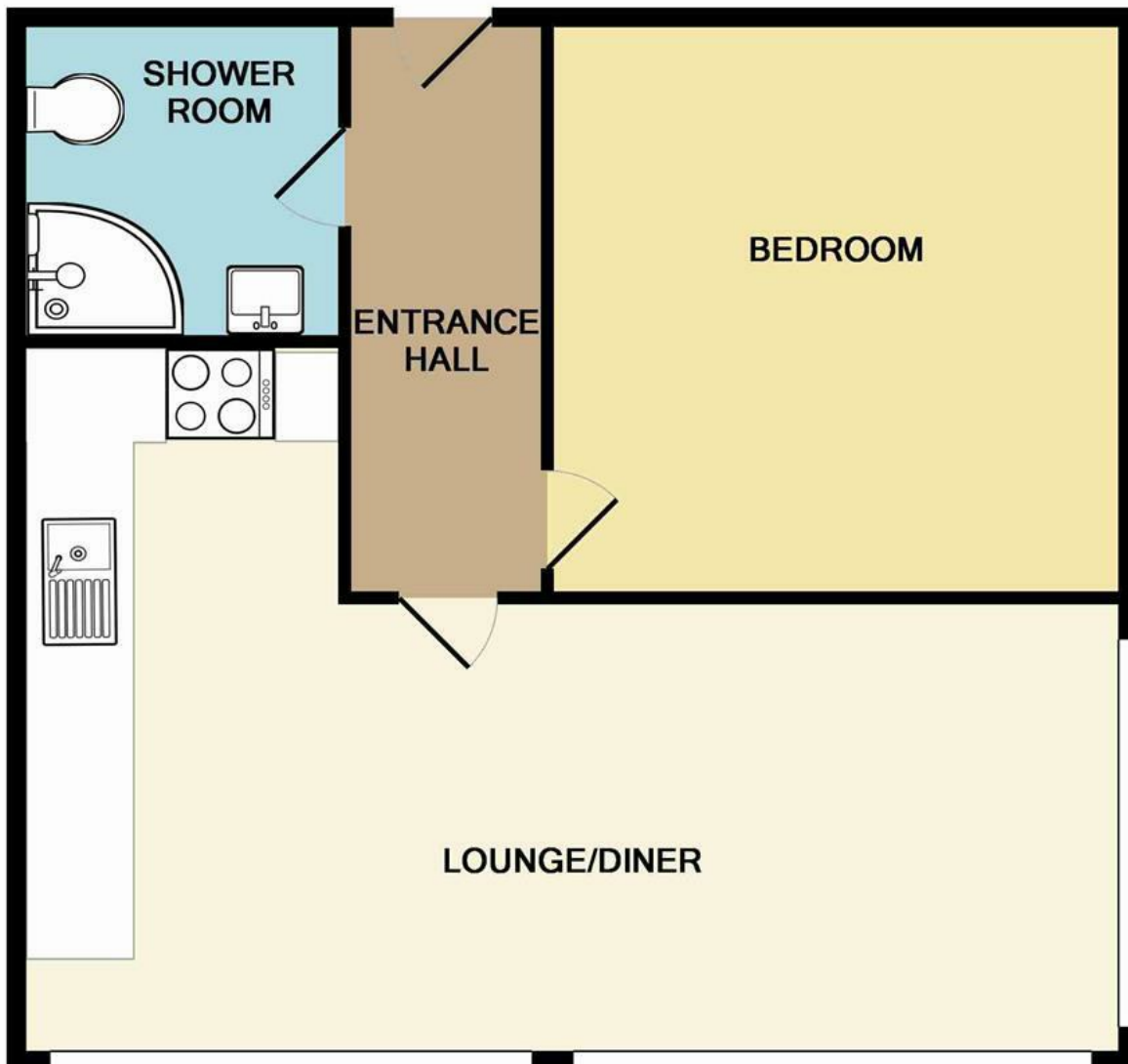




Rose Lane | Norwich | NR1
PCM £800 PCM

abbotFox



Energy Efficiency Rating		
	Current	Potential
Very energy efficient - lower running costs		
(92 plus) A		
(81-91) B		
(69-80) C		
(55-68) D		
(39-54) E		
(21-38) F		
(1-20) G		
Not energy efficient - higher running costs		
England & Wales	EU Directive 2002/91/EC	

Disclaimer – In accordance with the Property Misdescriptions Act, the company gives notice that all descriptions, references to condition, necessary permissions for use and other details are given in good faith and believed to be correct, but any intending lessees do not rely on them as statements of fact, but must satisfy themselves by inspection or other means, as to their accuracy.

Whilst every attempt has been made to ensure the accuracy of the floor plan contained here, measurements of doors, windows, rooms and any other items are approximate and no responsibility is taken for any error, omission, or mis-statement. This plan is for illustrative purposes only and should be used as such by any prospective purchaser. The services, systems and appliances shown have not been tested and no guarantee as to their operability or efficiency can be given
Made with Metropix ©2016



A fabulous top floor one bedroom apartment offering luxury living space finished to the highest standard within the exciting new Imperial House development. With an eclectic mix of shops, restaurants and bars for all tastes nearby it is the epitome of cool living.

Located within the city centre and within short walking distance of the railway station serving London Liverpool Street these apartments make the perfect home for the city dweller or investor.

Viewings strictly by appointment only.

