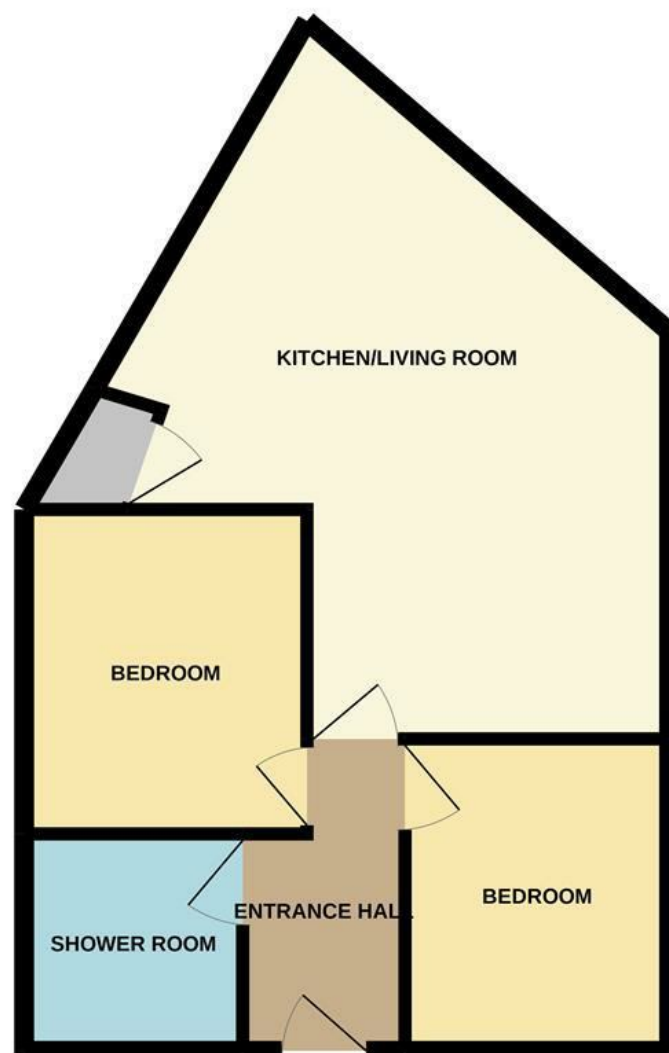




Surrey Street | Norwich | NR1
 PCM £1,300 PCM

abbotFox

FIRST FLOOR
 52.8 sq.m. (568 sq.ft.) approx.



TOTAL FLOOR AREA : 52.8 sq.m. (568 sq.ft.) approx.

Whilst every attempt has been made to ensure the accuracy of the floorplan contained here, measurements of doors, windows, rooms and any other items are approximate and no responsibility is taken for any error, omission or mis-statement. This plan is for illustrative purposes only and should be used as such by any prospective purchaser. The services, systems and appliances shown have not been tested and no guarantee as to their operability or efficiency can be given.
 Made with Metropix ©2021

Energy Efficiency Rating		Current	Potential
Very energy efficient - lower running costs			
(92 plus) A			
(81-91) B			
(69-80) C			
(55-68) D			
(39-54) E			
(21-38) F			
(1-20) G			
Not energy efficient - higher running costs			
England & Wales		EU Directive 2002/91/EC	

Disclaimer – In accordance with the Property Misdescriptions Act, the company gives notice that all descriptions, references to condition, necessary permissions for use and other details are given in good faith and believed to be correct, but any intending lessees do not rely on them as statements of fact, but must satisfy themselves by inspection or other means, as to their accuracy.



abbotFox presents this modern, city centre apartment in immaculate condition. Located within the popular Sentinel House development, which affords fantastic on-site facilities, including concierge service and gym facilities, this spacious two-bedroom apartment is ideal for any single professional or couple. With an inviting entrance hall, two bedrooms and a modern shower room, this home offers generous open plan living. An internal viewing comes highly recommended.

