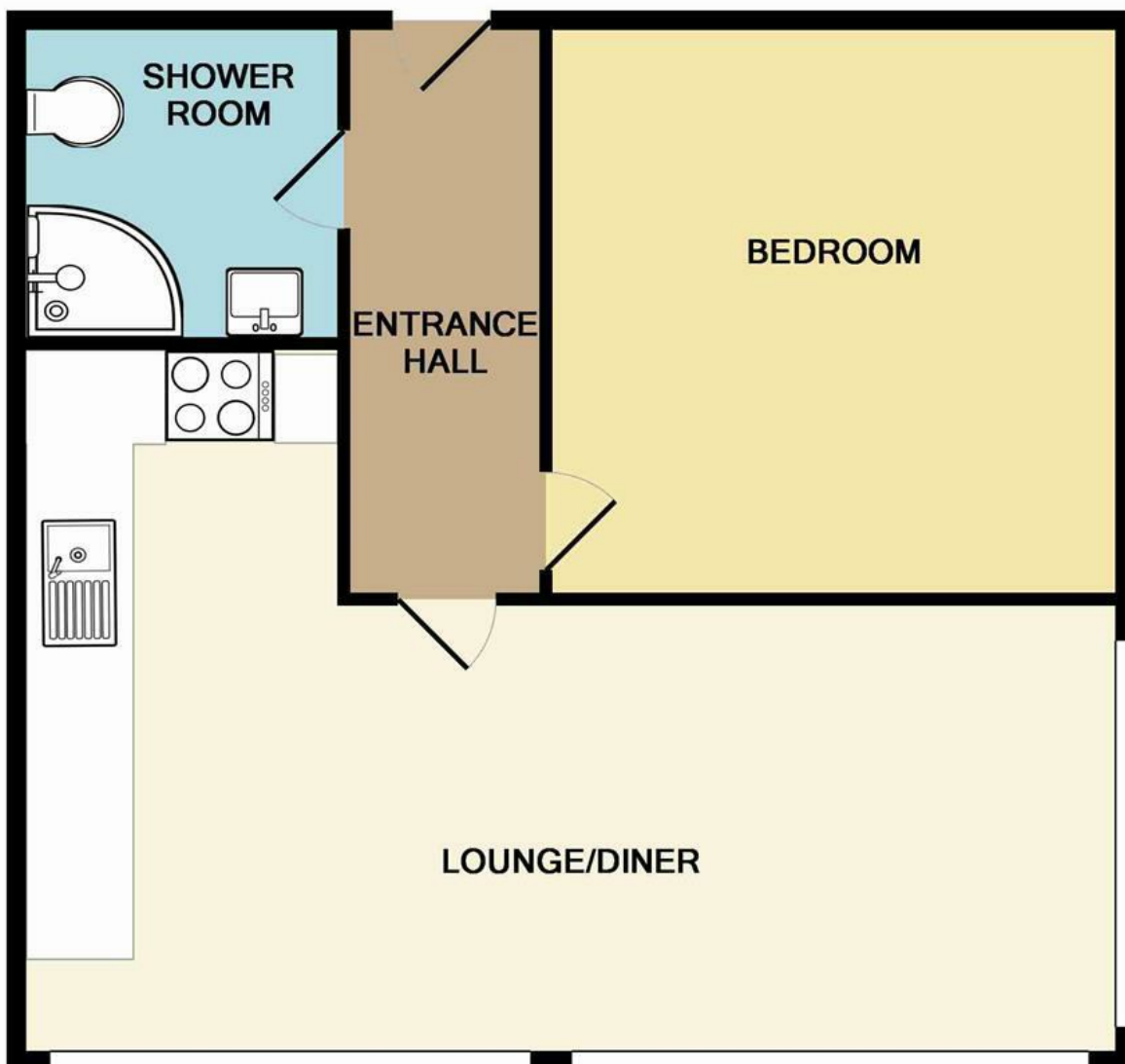




Rose Lane | Norwich | NR1
PCM £900 PCM

abbotFox



Energy Efficiency Rating		
	Current	Potential
<i>Very energy efficient - lower running costs</i>		
(92 plus) A		
(81-91) B		
(69-80) C		
(55-68) D		
(39-54) E		
(21-38) F		
(1-20) G		
<i>Not energy efficient - higher running costs</i>		
England & Wales	EU Directive 2002/91/EC	

Disclaimer – In accordance with the Property Misdescriptions Act, the company gives notice that all descriptions, references to condition, necessary permissions for use and other details are given in good faith and believed to be correct, but any intending lessees do not rely on them as statements of fact, but must satisfy themselves by inspection or other means, as to their accuracy.

Whilst every attempt has been made to ensure the accuracy of the floor plan contained here, measurements of doors, windows, rooms and any other items are approximate and no responsibility is taken for any error, omission, or mis-statement. This plan is for illustrative purposes only and should be used as such by any prospective purchaser. The services, systems and appliances shown have not been tested and no guarantee as to their operability or efficiency can be given
Made with Metropix ©2016



abbotFox presents this this charming one-bedroom, second-floor apartment nestled within the contemporary Imperial House development,

Situated on the sought-after Rose Lane, convenience is at your doorstep with the Norwich train station and bustling city center just a leisurely stroll away. Immerse yourself in the vibrant atmosphere, where an array of shops, cafes, restaurants, and bars await to be explored.

Upon entering, you'll be greeted by a sleek integrated oven/hob, washing machine, and fridge freezer, ensuring your comfort and convenience are effortlessly catered to. Whether you prefer the flexibility of furnishing your own space or the ease of a furnished unit, this property offers the versatility to accommodate your preferences.

Experience the epitome of urban living with this well-appointed apartment, where style, convenience, and location converge to offer you the ideal Norwich lifestyle. Don't miss the opportunity to make this your new home. Schedule a viewing today!

