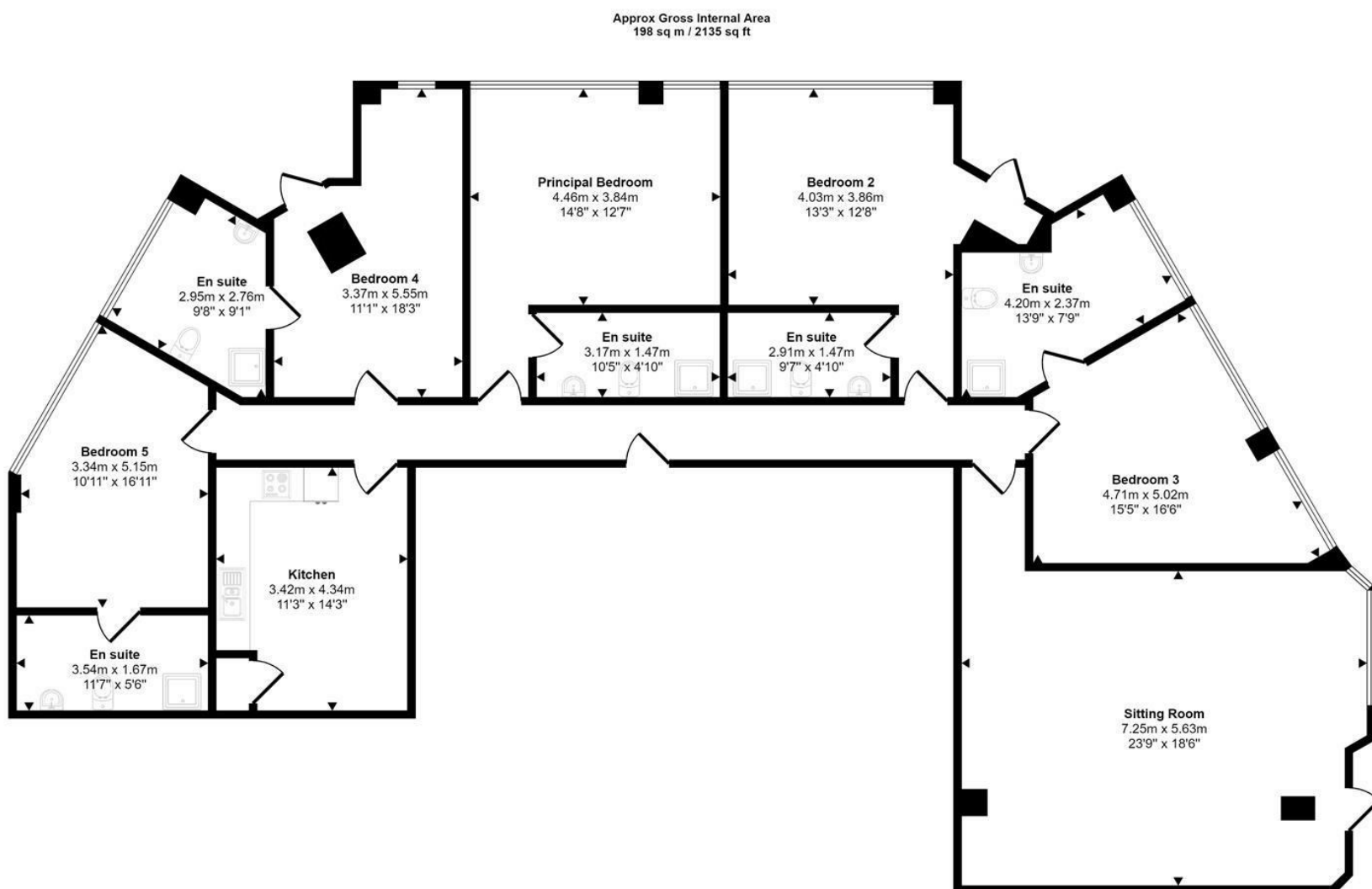




Surrey street | Norwich | NR1
Offers In Excess Of £440,000 - £500,000

abbotFox



Floorplan

This floorplan is only for illustrative purposes and is not to scale. Measurements of rooms, doors, windows, and any items are approximate and no responsibility is taken for any error, omission or mis-statement. Icons of items such as bathroom suites are representations only and may not look like the real items. Made with Made Snappy 360.

Energy Efficiency Rating		Current	Potential
Very energy efficient - lower running costs			
(92 plus) A			
(81-91) B			
(69-80) C			
(55-68) D		52	52
(39-54) E			
(21-38) F			
(1-20) G			
Not energy efficient - higher running costs			
England & Wales		EU Directive 2002/91/EC	

Disclaimer – In accordance with the Property Misdescriptions Act, the company gives notice that all descriptions, references to condition, necessary permissions for use and other details are given in good faith and believed to be correct, but any intending lessees do not rely on them as statements of fact, but must satisfy themselves by inspection or other means, as to their accuracy.



abbotFox presents this stunning five bedroom penthouse apartment with private, outside space in Norwich's city centre.

Bright and airy throughout, this unique home approaches an impressive 2200 sq ft and features not one but three outdoor areas.

A fully vaulted sitting room dominates the apartment and like the other rooms is vaulted. There is a generously proportioned and well equipped kitchen breakfast room.

Each double bedroom is provided with an en suite and in addition to this the principal and guest bedrooms have their own private outdoor space.

The apartment has secure underground parking.

Residents enjoy a concierge service, communal lounge and an exclusive 24/7 on site gym.

