



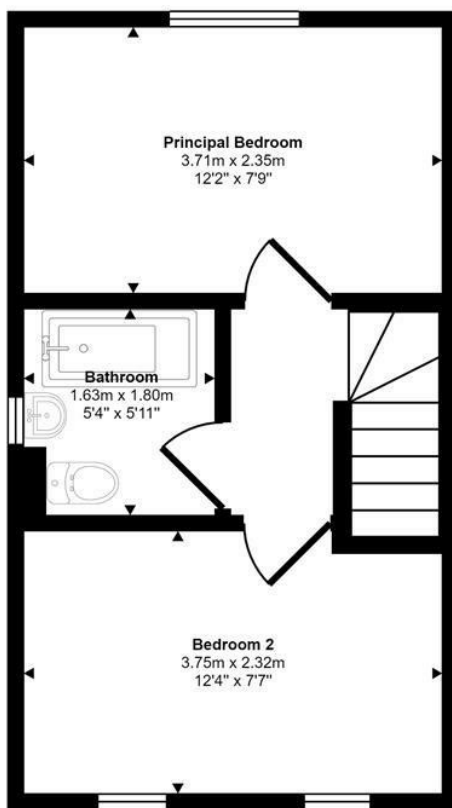
Hare Crescent | Hethersett | NR9
 Guide Price £230,000

abbotFox

Approx Gross Internal Area
 50 sq m / 541 sq ft



Ground Floor
 Approx 25 sq m / 270 sq ft



First Floor
 Approx 25 sq m / 271 sq ft

This floorplan is only for illustrative purposes and is not to scale. Measurements of rooms, doors, windows, and any items are approximate and no responsibility is taken for any error, omission or mis-statement. Icons of items such as bathroom suites are representations only and may not look like the real items. Made with Made Snappy 360.

Energy Efficiency Rating		Current	Potential
Very energy efficient - lower running costs			
(92 plus) A			98
(81-91) B		82	
(69-80) C			
(55-68) D			
(39-54) E			
(21-38) F			
(1-20) G			
Not energy efficient - higher running costs			
England & Wales		EU Directive 2002/91/EC	

Disclaimer – In accordance with the Property Misdescriptions Act, the company gives notice that all descriptions, references to condition, necessary permissions for use and other details are given in good faith and believed to be correct, but any intending lessees do not rely on them as statements of fact, but must satisfy themselves by inspection or other means, as to their accuracy.



abbotFox presents this modern semi-detached house. Situated within the popular and well serviced village of Hethersett, this home has been well maintained by the current owners since its construction, and offers an exceptional opportunity for any first time buyer.

Approaching the property, this home benefits from two off road parking spaces, adjacent to each other immediately to the front. Internally, the accommodation comprises; entrance hall, cloakroom and stylish open plan living to the ground floor, with two double bedrooms and a bathroom to the first floor. The enclosed rear garden is mostly laid to lawn and further benefits from a shed. Offered to the market with no onward chain, an internal viewing comes highly recommended.

GUIDE PRICE £230,000 - £240,000

