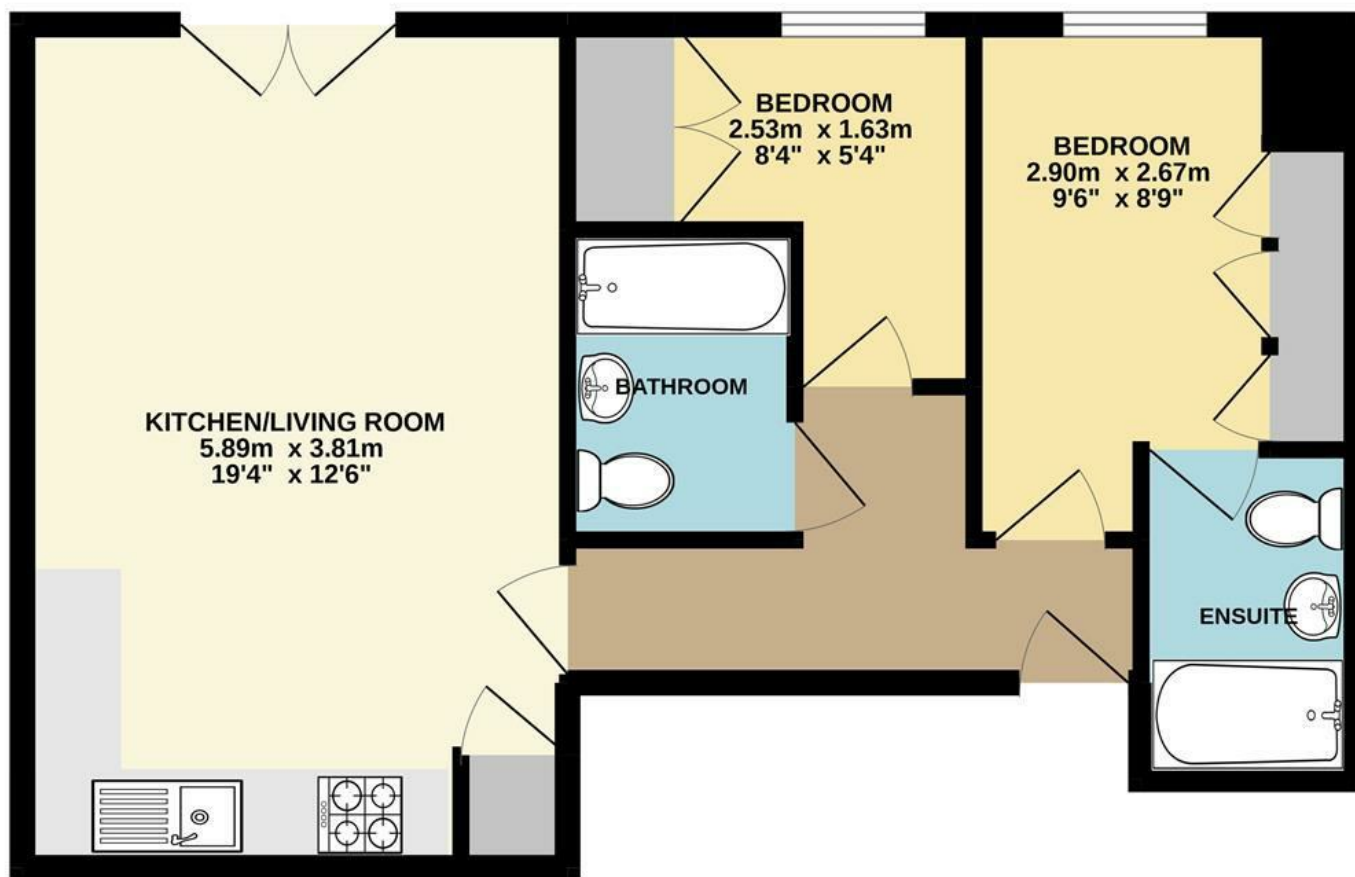




Wherry Road | Norwich | NR1  
PCM £1,250 PCM

abbotFox

GROUND FLOOR  
48.3 sq.m. (520 sq.ft.) approx.



Energy Efficiency Rating		
	Current	Potential
Very energy efficient - lower running costs		
(92 plus) <b>A</b>		
(81-91) <b>B</b>		
(69-80) <b>C</b>		
(55-68) <b>D</b>		
(39-54) <b>E</b>		
(21-38) <b>F</b>		
(1-20) <b>G</b>		
Not energy efficient - higher running costs		
<b>England &amp; Wales</b>		EU Directive 2002/91/EC

Disclaimer – In accordance with the Property Misdescriptions Act, the company gives notice that all descriptions, references to condition, necessary permissions for use and other details are given in good faith and believed to be correct, but any intending lessees do not rely on them as statements of fact, but must satisfy themselves by inspection or other means, as to their accuracy.

TOTAL FLOOR AREA : 48.3 sq.m. (520 sq.ft.) approx.

Whilst every attempt has been made to ensure the accuracy of the floorplan contained here, measurements of doors, windows, rooms and any other items are approximate and no responsibility is taken for any error, omission or mis-statement. This plan is for illustrative purposes only and should be used as such by any prospective purchaser. The services, systems and appliances shown have not been tested and no guarantee as to their operability or efficiency can be given.  
Made with Metropix ©2022



abbotFox presents this stylish city centre apartment. Situated within easy reach of a wealth of amenities, Norwich City Centre and the train station.

Accommodation comprises; entrance hall, lounge diner, kitchen area, two bedrooms and a family bathroom and en-suite bathroom to the master bedroom. The apartment also comes with an allocated parking space. An internal viewing comes highly recommended.

