

abbotFox

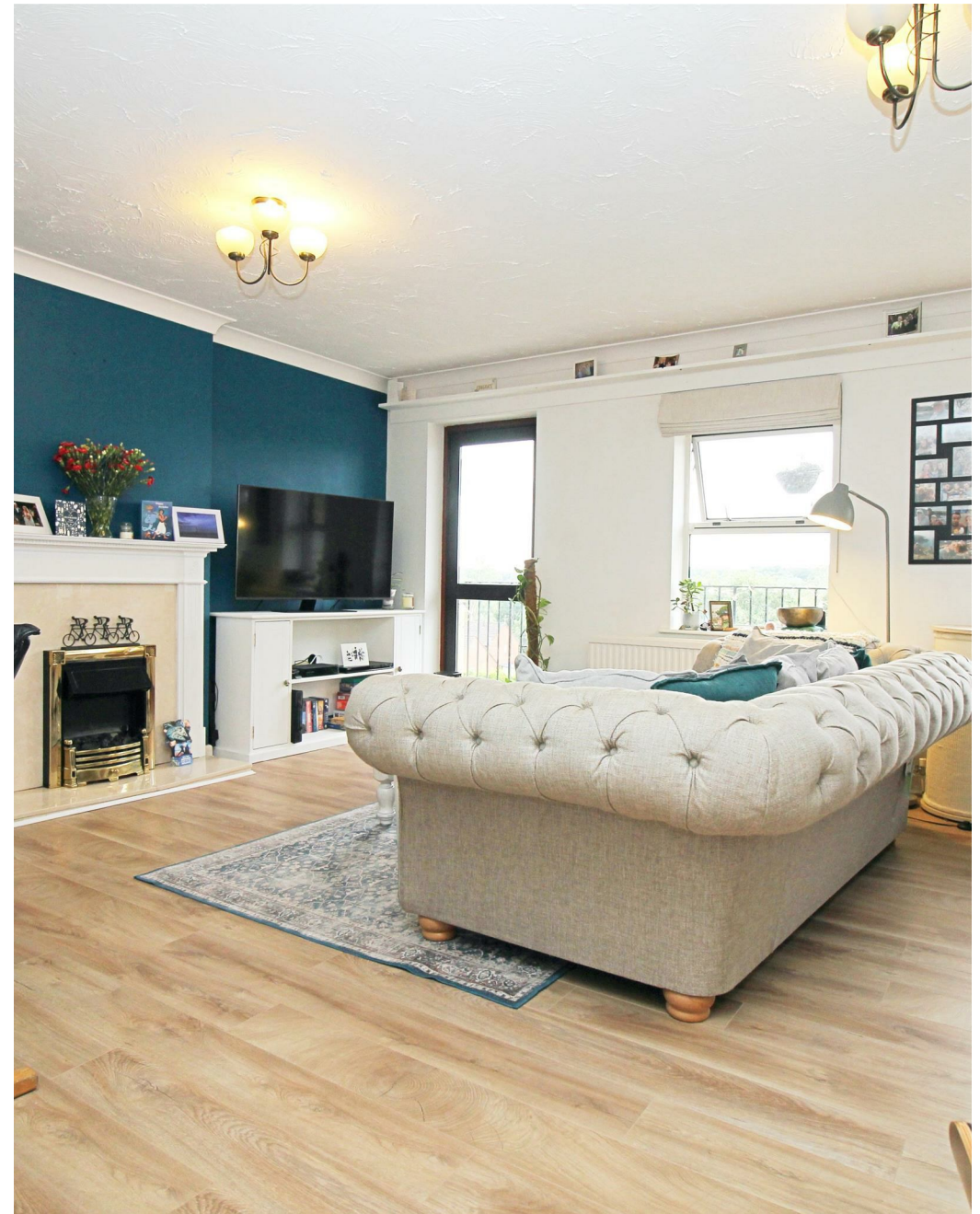


Ranson Road, Norwich
£1,250 PCM

“

We are a team of genuine individuals who hold a deep passion for both property and marketing. Collectively, we bring over 70 years of experience in the property market of Norfolk and Suffolk. Our affection for both counties runs deep, and we are enthusiastic about sharing our passion with you.

Colin McKenzie | **Branch Partner**







THE DETAIL_____

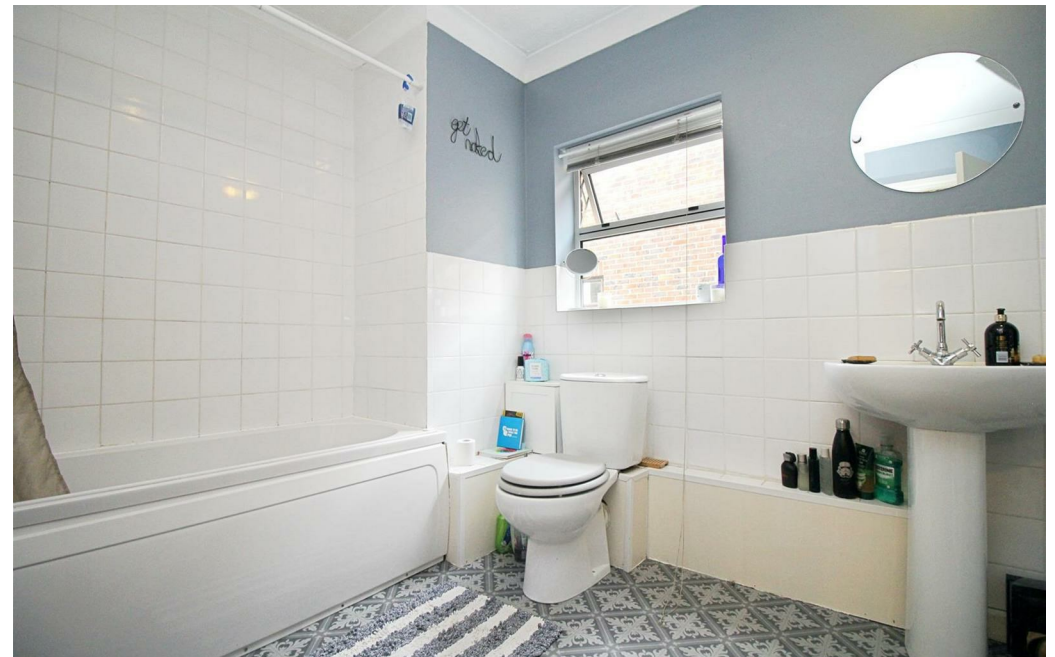
abbotFox presents this exquisite two-bedroom apartment, situated in the sought-after locale of Thorpe Hamlet. This residence boasts a harmonious blend of spaciousness, elegance, and practicality, catering to those desiring effortless living.

Upon entering, you are greeted by a welcoming entrance hall, leading seamlessly into the spacious lounge diner, ideal for relaxation and entertaining alike. The separate kitchen offers convenience and functionality, providing ample space for culinary endeavors.

Two generously proportioned double bedrooms provide comfort and privacy, while a well-appointed family bathroom ensures convenience for everyday living.

Adding to the allure of this property is a private balcony, offering a serene outdoor space to unwind and enjoy the surrounding views. Additionally, allocated parking provides ease and convenience for residents.

Don't miss the opportunity to experience the effortless lifestyle offered by this exceptional residence in Thorpe Hamlet. Contact abbotFox today to arrange a viewing and make this your new home.

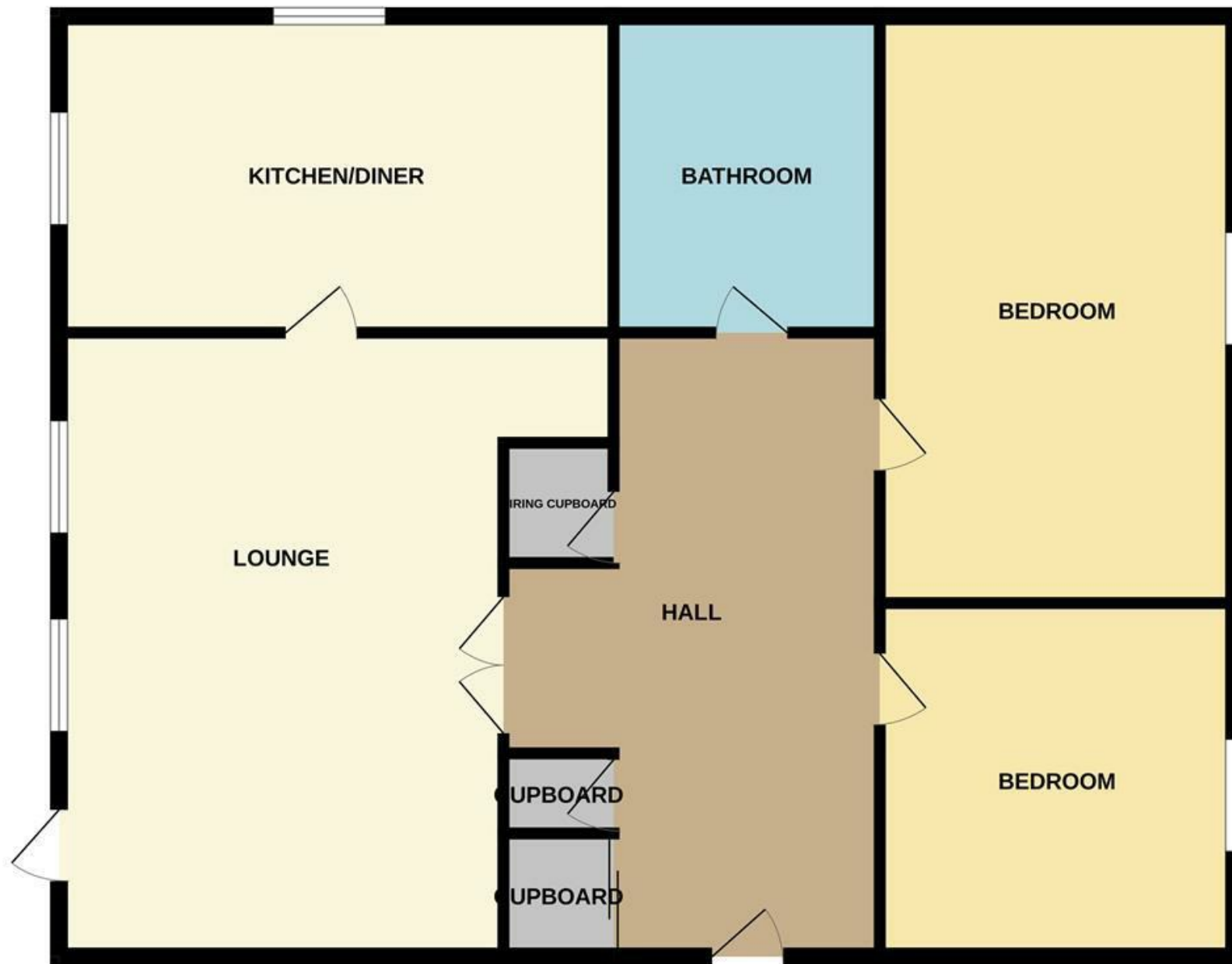






THE HIGHLIGHTS____

- Spacious two bedroom apartment
- Private balcony
- Generous living accommodation
- Allocated parking
- Convenient location
- Viewing advised



Let's talk

01603 660000

sales@abbotfox.co.uk

@abbotfox

EPC RATING -

Disclaimer – In accordance with the Property Misdescriptions Act, the company abbotFox gives notice that all descriptions, references to condition, necessary permissions for use and other details are given in good faith and believed to be correct, but any purchaser should not rely on them as statements of fact, and must satisfy themselves by inspection or other means, as to their accuracy.