



abbotFox

37

37 Cromer Road, NR11

Generously proportioned 1930s detached house

37 Cromer Road, NR11

Generously proportioned 1930s detached house

abbotFox presents this generously proportioned 1930s detached house. An ideal family home, or holiday home, this property offers unspoilt field views to the rear, and a sea glimpse to the front. An exceptional opportunity for any buyer looking for a North Norfolk coastal home, this property demands an internal inspection.

The internal accommodation is neatly arranged over two floors and provides a sense of space throughout. The ground floor comprises; an inviting entrance hall, spacious lounge diner, kitchen breakfast room, utility room, cloakroom and a bright garden room, which overlooks the extensive gardens. The first floor offers three comfortable bedrooms and a family bathroom off landing. Externally, the generous frontage allows for ample off road parking whilst the South facing rear garden offers a wonderful space for entertaining or for any keen gardener.

Mundesley is a well-regarded and exceptionally well serviced coastal village, with an array of amenities including, primary schools, parks, golf course, pubs, restaurants, health centre and a variety of independent retailers. The property itself sits within easy reach of the beach and all the village has to offer. An internal viewing comes highly recommended.

KEY FEATURES

- 1930s detached house
- Three bedrooms
- Generous living accommodation
- South facing gardens with field views
- Popular coastal location
- Easy access to a wealth of local amenities
- Ideal family home or holiday home
- Viewing advised

SITUATION

Mundesley is a popular Norfolk Coastal village located just 20 miles northeast from the City of Norwich. The village has a good selection of amenities including a Post Office, pharmacy, convenience stores, fish and chip shops, cafes, public houses and the Mundesley Golf Course. Schooling for all ages is available from Mundesley Infant and Mundesley Junior School with secondary education on offer from North Walsham High School. Bus routes run regularly to Norwich with train links available from the nearby towns of Cromer and North Walsham. From Norwich further rail links are on offer with destinations such as London Liverpool Street and Cambridge. To the north of Norwich is Norwich International Airport with flights to a variety of domestic and international destinations.

SERVICES

Boiler and radiators, mains gas, mains water

LOCAL AUTHORITY

North Norfolk District Council

COUNCIL TAX BAND

TENURE

Freehold





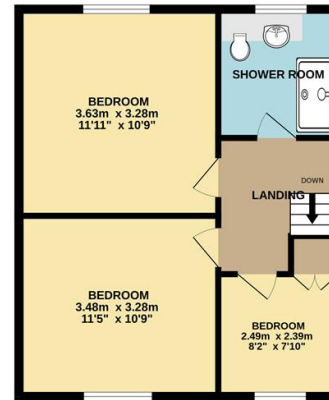
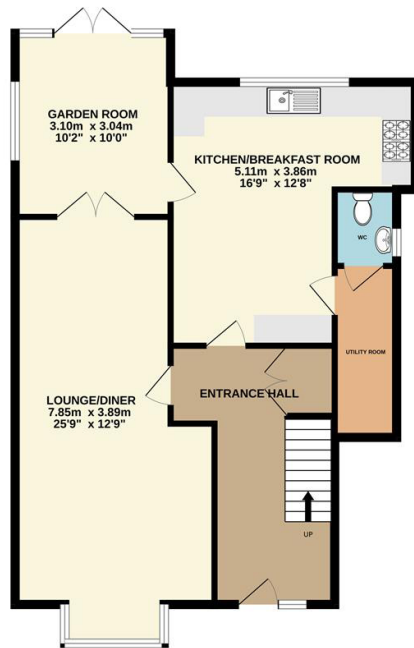
37 Cromer Road, NR11

Generously proportioned 1930s detached house



GROUND FLOOR

1ST FLOOR



Disclaimer - In accordance with the Property Misdescriptions Act, the company gives notice that all descriptions, references to condition, necessary permissions for use and other details are given in good faith and believed to be correct, but any intending purchasers do not rely on them as statements of fact, but must satisfy themselves by inspection or other means, as to their accuracy.



abbotFox Norwich Branch
01603 660000
sales@abbotfox.co.uk

Whilst every attempt has been made to ensure the accuracy of the floorplan contained here, measurements of doors, windows, rooms and any other items are approximate and no responsibility is taken for any error, omission or mis-statement. This plan is for illustrative purposes only and should be used as such by any prospective purchaser. The services, systems and appliances shown have not been tested and no guarantee as to their operability or efficiency can be given.
Made with Metropix 62024