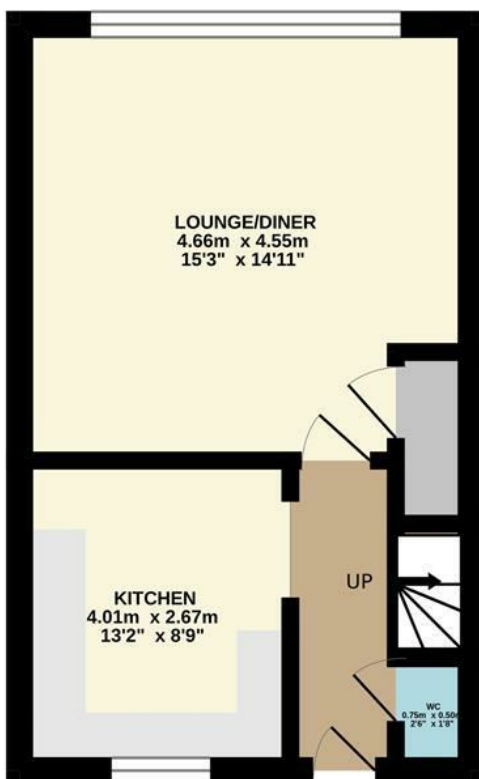




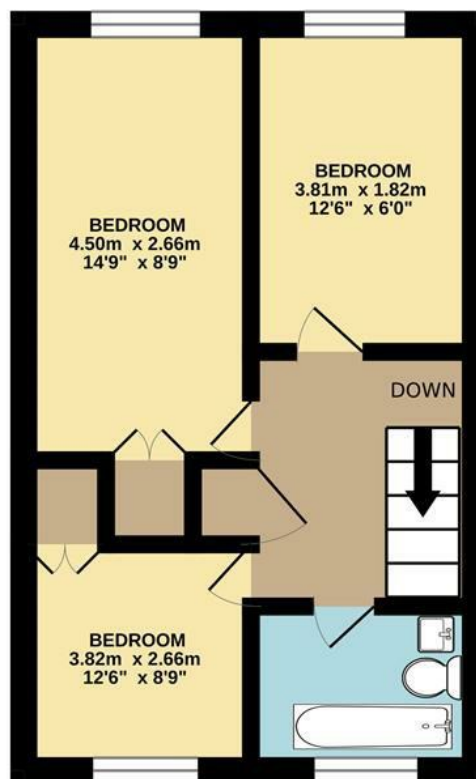
Globe Place | Norwich | NR2
 Guide £160,000

abbotFox

GROUND FLOOR
 15.0 sq.m. (161 sq.ft.) approx.



1ST FLOOR
 15.0 sq.m. (161 sq.ft.) approx.



TOTAL FLOOR AREA : 30.0 sq.m. (323 sq.ft.) approx.

Whilst every attempt has been made to ensure the accuracy of the floorplan contained here, measurements of doors, windows, rooms and any other items are approximate and no responsibility is taken for any error, omission or mis-statement. This plan is for illustrative purposes only and should be used as such by any prospective purchaser. The services, systems and appliances shown have not been tested and no guarantee as to their operability or efficiency can be given.
 Made with Metropix ©2023

Energy Efficiency Rating		Current	Potential
Very energy efficient - lower running costs			
(92 plus) A			
(81-91) B			
(69-80) C			
(55-68) D			
(39-54) E			
(21-38) F			
(1-20) G			
Not energy efficient - higher running costs			
England & Wales		EU Directive 2002/91/EC	

Disclaimer – In accordance with the Property Misdescriptions Act, the company gives notice that all descriptions, references to condition, necessary permissions for use and other details are given in good faith and believed to be correct, but any intending lessees do not rely on them as statements of fact, but must satisfy themselves by inspection or other means, as to their accuracy.



abbotFox presents this three bedroom maisonette. Situated within easy reach of Norwich City Centre, this home affords an exceptional degree of convenience. Accommodation comprises; entrance hall, lounge diner and kitchen to the lower floor, with the upper floor offering three bedrooms and a family bathroom. Offered to the market with no onward chain, this home represents an excellent opportunity for any first time buyer or buy-to-let investor.

GUIDE PRICE £160,000 - £170,000

