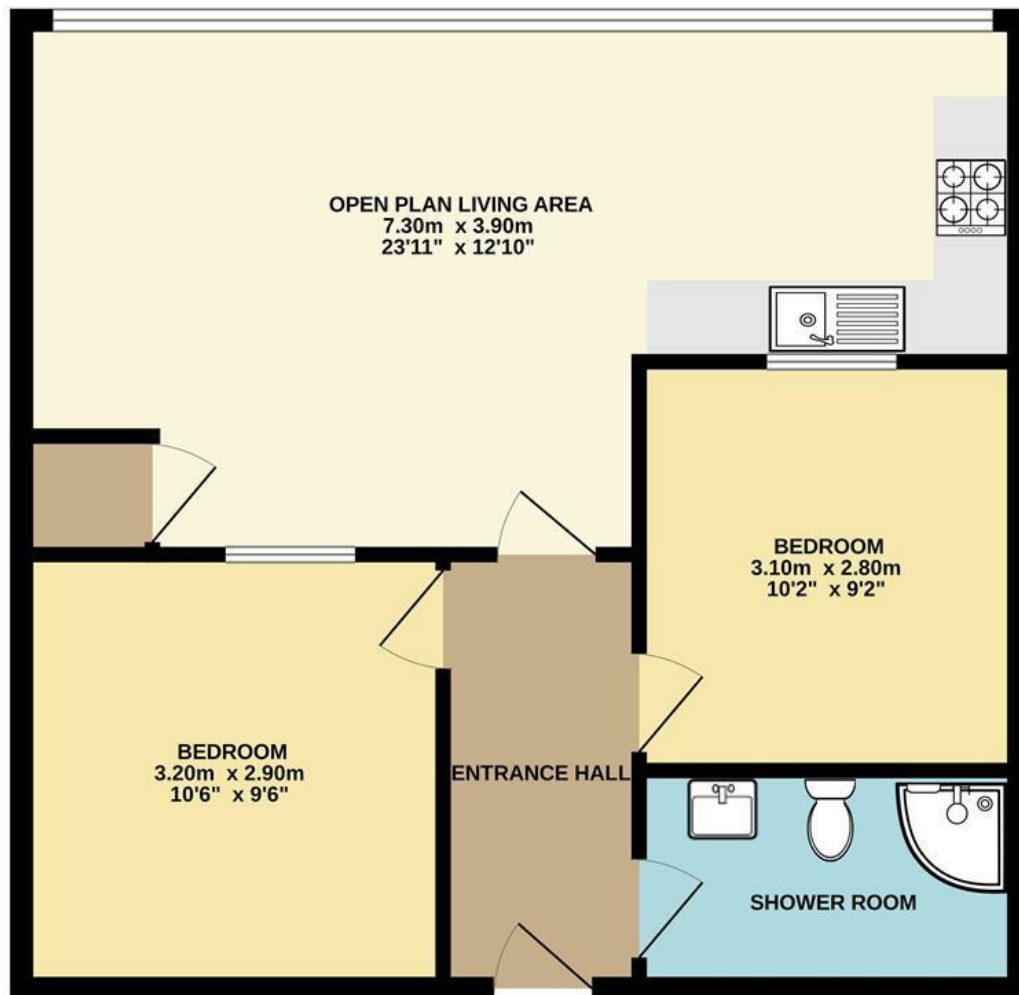




Surrey Street | Norwich | NR1
 Guide Price £180,000

abbotFox

GROUND FLOOR
 57.9 sq.m. (623 sq.ft.) approx.



TOTAL FLOOR AREA: 57.9 sq.m. (623 sq.ft.) approx.

Whilst every attempt has been made to ensure the accuracy of the floorplan contained here, measurements of doors, windows, rooms and any other items are approximate and no responsibility is taken for any error, omission or mis-statement. This plan is for illustrative purposes only and should be used as such by any prospective purchaser. The services, systems and appliances shown have not been tested and no guarantee as to their operability or efficiency can be given.
 Made with Metropix ©2024

Energy Efficiency Rating		Current	Potential
Very energy efficient - lower running costs			
(92 plus) A			
(81-91) B			
(69-80) C			
(55-68) D		65	65
(39-54) E			
(21-38) F			
(1-20) G			
Not energy efficient - higher running costs			
England & Wales		EU Directive 2002/91/EC	

Disclaimer – In accordance with the Property Misdescriptions Act, the company gives notice that all descriptions, references to condition, necessary permissions for use and other details are given in good faith and believed to be correct, but any intending lessees do not rely on them as statements of fact, but must satisfy themselves by inspection or other means, as to their accuracy.



abbotFox presents this stylish City Centre apartment. Situated within the popular Sentinel House development, which offers a wonderful range of onsite amenities, including concierge service, residents gym and lounge, this home represents an ideal opportunity for any buyer looking to enjoy a vibrant City lifestyle.

The accommodation is neatly arranged and comprises; an inviting entrance hall, generous open plan living area, with stunning City views, two double bedrooms and a spacious shower room. The property further benefits from a secure, underground parking space. Having been recently re-decorated and offered to the market with no onward chain, an internal viewing comes highly recommended.

